

PRODUCT CATALOGUE

Established in Cornwall in 1974, we have 50 years solid experience in the fibreglass industry, keeping pace with the fast changing technical advances and developments. In 2001, we became industry leaders by creating our own website and promoting online ordering. Now, 23 years later, we are still top of our game. We bulk purchase and import our materials from around the world, direct from the manufacturers wherever possible, in order to give our customers the best quality products at the lowest prices.

Whether you are an individual DIY hobbyist or a large scale manufacturer, novice or professional, require just a kilo or several tonnes, we are your one-stop-shop for everything fibreglass and more. If you can't see what you need in our catalogue, we can probably source it so please ask!



RESINS	3	MIXING EQUIPMENT	35
GELCOATS AND TOPCOATS	4	PROTECTIVE EQUIPMENT	36
SPECIAL GELCOATS & RESINS	11	MOULD PREPARATION	39
RESIN ADDITIVES	13	CALCULATING QUANTITIES	44
EPOXY RESIN	14	PAINTS, COATINGS & PRIMERS	45
CHOPPED STRAND MAT	18	MARINE PAINTS & BOATCARE	47
GLASSFIBRE FABRICS	20	SOLVENTS AND CLEANERS	53
FILLERS	23	ADHESIVES & TAPES	54
PRE MIXED FILLERS	25	POND LINING & COATING	57
FOAM & CORE MATERIALS	26	REPAIR KITS	58
TOOLS	27	CRAFT MAKING	59
POWER TOOLS	33	REFERENCE	63



YOUR ONE STOP ONLINE SHOP



FREE Online & Telephone
Technical advice!
Call: 01209 821028

Telephone lines open :
08:30 - 17:00

On-site shop open :
08:00 - 16:45

Email queries :
sales@cfsnet.co.uk



**Delivery Nationwide &
International** *



**Competitive
Bulk Prices!** **

* Service may not be available in some countries
** Call our sales team for a quote



For up to date pricing information,
please visit our website or call our Sales Team.

HOW TO FIND US



GENERAL PURPOSE RESIN



Free catalyst with all Resin, Gelcoats and Topcoats in containers up to 25kg

CFS Fibreglass provides a selection of polyester laminating resins suitable for a wide range of projects including Lloyds Approved boat building resins, Trade Line economy resins and filled resins.

Our general purpose resin is top quality, pre-accelerated, thixotropic, orthophthalic resin suitable for a wide range of applications. Lloyds approved for use in boat building & repair. Good for roofing, casting and more. Used by professionals worldwide from small industrial to super-yachts. Manufactured by one of the worlds leading producers of resins, it is formulated to provide high quality mouldings whilst keeping styrene emissions low, allowing a better working environment.

GENERAL PURPOSE RESIN (WHITE)



Our general purpose resin is top quality, pre-accelerated, thixotropic, orthophthalic resin suitable for a wide range of applications. Lloyds approved for use in boat building & repair. Good for roofing, casting and more. Pre-pigmented white.

BIO RESIN



Top quality general purpose resin with 22% bio sourced raw material for improved sustainability. Contains advanced additives for improved bonding between layers, lower emissions and superior strength over conventional polyester resins. Readily accepts filler and metal powders for casting.

TRADE LINE POLYESTER RESIN



Good quality, general purpose polyester resin. Ideal for general moulding and casting.

EASYLAM



Filled general purpose resin. Increases laminate thickness over standard resins. Easylam is pigmentable. Colour: beige.

Catalyst Mixing Ratio

1cc=1mg=1cc

	Resin Weight					
	50g	100g	250g	500g	1kg	5kg
Addition of Catalyst grams/millilitres						
1%	0.5	1	2.5	5	10	50
2%	1	2	5	10	20	100
3%	1.5	3	7.5	15	30	150



Image is courtesy of Cockwells Boatbuilding and Andrew Wright Photography

GELCOATS AND TOPCOATS

STANDARD GELCOATS - CLEAR/WHITE

A range of top quality coatings for general moulding, roofing and GRP finishing. Lloyds Approved gelcoats and topcoats are suitable for boat building and repair.

**LLOYDS
APPROVED**

GELCOAT (Clear)



Pigmentable. Lloyds Approved. General moulding gelcoat. Excellent durability.

GELCOAT (White)



Pigmented white. Lloyds Approved. General moulding gelcoat. Excellent durability.

METRODECK TOPCOAT



Specifically designed for roofing applications, this system has undergone extensive external fire exposure roof tests and achieved fire retardant BS476 Part 3 FAB. The finished low styrene system (coloured BS18B25, grey) provides excellent properties. Flexible, UV stable, chemical and heat resistant. Resists foot traffic and thermal expansion.

STANDARD TOPCOATS - CLEAR/GREY/WHITE

**LLOYDS
APPROVED**



Grey/white pigmented or clear unpigmented. Lloyds Approved. Great for GRP roofing and boats.

CHECK OUT OUR ROOFING CATALOGUE



NON SLIP TOPCOATS - GREY/CLEAR



**LLOYDS
APPROVED**

Grey pigmented or clear unpigmented. Lloyds Approved. Contains large grain for heavy duty non slip floor coatings. Excellent durability.

TRADE LINE GREY TOPCOAT



Budget topcoat suitable for non-critical applications. A re-blended polyester gelcoat pigmented to a dark grey (RAL7011) for use as a topcoat. Our Trade Line materials are not Lloyds Approved and are sold without manufacturer's warranty. These materials may have a variable cure time. Users are advised to carry out a small test to determine pot life.

COLOURED GELCOAT

A high quality, isophthalic and pigmented, Lloyds Approved gelcoat. Gelfast is Polycor gelcoat pre-pigmented by CFS Fibreglass, for rapid delivery times, from 40 standard colours. The full range of BS, RAL and custom colours are also available.

**LLOYDS
APPROVED**

This gelcoat has excellent physical properties, water resistance and UV light stability and can be used for a wide variety of parts, making it very popular. Gelcoat forms the smooth outer surface of the finished laminate and therefore is applied to the prepared mould first. Supplied with free catalyst.

OFF WHITE BS10B15

LIGHT IVORY RAL1015

VELLUM BEIGE BS08B17

STONE FASCOL

GAZELLE BS08B21

SEACREST GREY BS00A01

LIGHT AIRCRAFT GREY

CONCRETE GREY RAL7023

SIGNAL GREY RAL7004

MOUSE GREY RAL7005

DARK ADMIRALTY GREY BS18B25

IRON GREY RAL7011

ANTHRACITE GREY RAL7016

SKY BLUE BS18E50

TRIDENT BLUE BS18E51

SMOOTH BLUE BS20E51

SIGNAL BLUE RAL5005

ULTRAMARINE BLUE RAL5002

NIGHT BLUE RAL5022

FRENCH BLUE FASCOL

COBALT BLUE RAL5013

OXFORD BLUE FASCOL

MALLARD GREEN BS16E53

LIGHT OLIVE GREEN BS12B25

COLOURED GELCOAT

REED GREEN RAL6013

MAY GREEN RAL6017

EMERALD GREEN RAL6001

DARK GREEN BS14C39

RACING GREEN FASCOL

YELLOW BS10E55PB

TRAFFIC YELLOW RAL1023

GOLDEN YELLOW FASCOL

TANGERINE FASCOL

PURE ORANGE RAL2004PB

POPPY RED

POST OFFICE RED FASCOL

CARMINE RED RAL3002

CRIMSON RED

CHESTNUT BROWN FASCOL

FAWN BROWN RAL8007

SEPIA BROWN RAL8014

SUPER WHITE BS00E55

SUPER BLACK BS00E53

Free catalyst with all Resin,
Gelcoats and Topcoats in
containers up to 25kg

We can source Llewellyn Ryland
Gelcoats and Topcoats on request.
Please call with your requirements.



Image is courtesy of Cockwells Boatbuilding and Andrew Wright Photography

COLOURED TOPCOAT

Topfast is a high quality, isophthalic and pigmented, Lloyds Approved Topcoat. It comes pre-pigmented by CFS Fibreglass, for rapid delivery times, from 40 standard colours. The full range of BS, RAL and custom colours are also available.

**LLOYDS
APPROVED**

Topfast has excellent physical properties, water resistance and UV light stability. It cures tack free, unlike standard gelcoat, which allows it to be used like a paint to seal and fibreglass surfaces. Topfast is suitable for a wide range of coating applications and for all GRP surfaces where a hard-wearing waterproof coating is required. Not suitable for spray application.

OFF WHITE BS10B15

LIGHT IVORY RAL1015

VELLUM BEIGE BS08B17

STONE FASCOL

GAZELLE BS08B21

SEACREST GREY BS00A01

LIGHT AIRCRAFT GREY

CONCRETE GREY RAL7023

SIGNAL GREY RAL7004

MOUSE GREY RAL7005

DARK ADMIRALTY GREY BS18B25

IRON GREY RAL7011

ANTHRACITE GREY RAL7016

SKY BLUE BS18E50

TRIDENT BLUE BS18E51

SMOOTH BLUE BS20E51

SIGNAL BLUE RAL5005

ULTRAMARINE BLUE RAL5002

NIGHT BLUE RAL5022

FRENCH BLUE FASCOL

COBALT BLUE RAL5013

OXFORD BLUE FASCOL

MALLARD GREEN BS16E53

LIGHT OLIVE GREEN BS12B25

COLOURED TOPCOAT

REED GREEN RAL6013

MAY GREEN RAL6017

EMERALD GREEN FASCOL

DARK GREEN BS14C39

RACING GREEN FASCOL

YELLOW BS10E55PB

TRAFFIC YELLOW RAL1023

GOLDEN YELLOW FASCOL

TANGERINE FASCOL

PURE ORANGE RAL2004PB

POPPY RED

POST OFFICE RED FASCOL

CARMINE RED RAL3002

CRIMSON RED

CHESTNUT BROWN FASCOL

FAWN BROWN RAL8007

SEPIA BROWN RAL8014

SUPER WHITE BS00E55

SUPER BLACK BS00E53

Free catalyst with all Resin,
Gelcoats and Topcoats in
containers up to 25kg

We can source Llewellyn Ryland
Gelcoats and Topcoats on request.
Please call with your requirements.



Image is courtesy of Padstow Boatyard

PIGMENT PASTES

Pigments are used to colour resins, gelcoats and topcoats. Because pigments tend to detract from the mechanical properties of the resin no more pigments should be added than necessary.

Gelcoats and Topcoats: Most colours will require up to 10% addition by weight. Some pale colours may require up to 15% addition by weight for full coverage.

Resins: Mix up to 5% addition by weight. The full range of BS, RAL and custom colours can be ordered subject to supplier availability.

Colour samples are a guide only, an exact colour match cannot be guaranteed due to printing processes.

OFF WHITE BS10B15

LIGHT IVORY RAL1015

VELLUM BEIGE BS08B17

STONE FASCOL

GAZELLE BS08B21

SEACREST GREY BS00A01

LIGHT AIRCRAFT GREY

CONCRETE GREY RAL7023

SIGNAL GREY RAL7004

MOUSE GREY RAL7005

DARK ADMIRALTY GREY BS18B25

IRON GREY RAL7011

ANTHRACITE GREY RAL7016

SKY BLUE BS18E50

TRIDENT BLUE BS18E51

SMOOTH BLUE BS20E51

SIGNAL BLUE RAL5005

ULTRAMARINE BLUE RAL5002

NIGHT BLUE RAL5022

FRENCH BLUE FASCOL

COBALT BLUE RAL5013

OXFORD BLUE FASCOL

MALLARD GREEN BS16E53

LIGHT OLIVE GREEN BS12B25

REED GREEN RAL6013

MAY GREEN RAL6017

EMERALD GREEN FASCOL

DARK GREEN BS14C39

RACING GREEN FASCOL

YELLOW BS10E55PB

TRAFFIC YELLOW RAL1023

GOLDEN YELLOW FASCOL

TANGERINE FASCOL

PURE ORANGE RAL2004PB

POPPY RED

POST OFFICE RED FASCOL

CARMINE RED RAL3002

CRIMSON RED

CHESTNUT BROWN FASCOL

FAWN BROWN RAL8007

SEPIA BROWN RAL8014

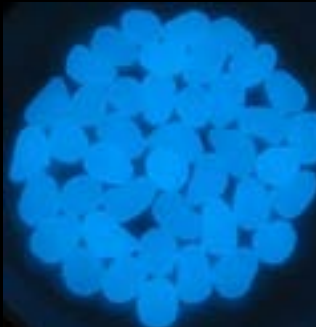
SUPER WHITE BS00E55

SUPER BLACK BS00E53

Luminescent pigments

These amazing pigments are available in a fine crystal form for easy mixing into our Polyester Clear Cast Resin, Polyurethane Clear Cast Resin, Clear Gelcoats, Clear Topcoats and Varnishes.

They absorb radiant energy from sunlight (or artificial lighting) and convert it into longer wavelengths in the visible spectrum, thereby emitting it as light with the sensation of colours. Add to resins at approx 10-20%.



Translucent pigment pastes



Translucent pigments become more opaque the more you add, for best results expect to use only a 1% addition and always stir thoroughly.

Amber, Blue, Blue Green, Magenta, Orange, Yellow Green, Yellow, Red, Turquoise.

SPECIAL GELCOATS AND RESINS

FASTCAST POLYURETHANE RESIN

WHITE FASTCAST



A low odour two component polyurethane system which is designed for thin sections, or castings up to 20mm thick that require very quick demould times and can be used unfilled. Good thermal resistance. With low viscosity it produces excellent surface detail and finish. Does not shatter like polyester casts. Simulates polypropylene when fully cured.

White Fastcast is not suitable for pigmenting

- Pot Life: 4-5 Mins
- Demould: 20-25 Mins
- Recommended Casting Thickness: 2-15mm



Image courtesy of Ben of Kent Props

STANDARD FASTCAST



A low odour two component polyurethane system which is designed for thin sections, or castings up to 20mm thick that require very quick demould times and can be used unfilled. Good thermal resistance. With low viscosity it produces excellent surface detail and finish. Does not shatter like polyester casts. Simulates polypropylene when fully cured.

- Pot Life (200g @ 20°C) : 2 mins
- Demould (200g @ 20°C) : 20 mins
- Minimum casting Thickness : 2mm

WATER CLEAR CASTING RESIN



A water clear casting resin for embedding and casting paperweights, specimens etc. Pot life at 20°C using 1% catalyst is approx. 20 minutes.

OPTIMOLD TOOLING RESIN



This is a specially formulated polyester resin for mouldmaking. This product has nil shrinkage which enables moulds 20mm thick to be made in just one day without any distortion. Pack includes catalyst.

XTREME SURFBOARD RESIN



High performance polyester resin recently made available to the UK. Xtreme is specifically designed for surfboard manufacture. It is UV stable with excellent clarity.

SPECIAL GELCOATS AND RESINS

CHEMICAL & HEAT RESISTANT RESIN



An isophthalic resin is used where better resistance against heat and chemicals is required. To obtain full properties, the finished laminate should be "post cured" for at least 3hrs at 80°C. When using in chemical tanks, check resin suitability first. A resin/tissue coating will also improve resistance. Pot life at 20°C using 2% catalyst is approximately 35 minutes.

FIRE RETARDANT RESIN - CLASS 1 AND CLASS 2



This product contains a high level of fire retardant additives. It cures with an opaque, off-white finish.

A top quality, general purpose resin. For laminates requiring fire retardancy to BS476 part 7.

GC206 VINYLESTER TOOLING GEL



Tooling gelcoat based on vinylester resin which provides maximum resistance to chemicals and solvents. This high performance gelcoat lends the mould a lasting high gloss finish which will stand up to a relatively large number of lifts between each waxing and polishing operation. Due to its high deformation temperature (over 100°C) and flexibility, this gelcoat has a robust quality and is consequently less susceptible to crack formation and dull patches.

VINYLESTER RESIN



This resin is a bisphenol A epoxy based vinylester which offers chemical resistance towards acids, alkalines and oxidizing agents. High heat distortion temperature (100°C) and excellent bonding makes this resin far superior to polyester resins.

SPRAY GELCOAT



A high quality, isophthalic, Lloyds approved gelcoat. This gelcoat has excellent physical properties, water resistance and UV light stability. It can be used for a wide variety of parts, making it very popular. Clear and pre-pigmented white versions available. Pigments can be added to clear gelcoat at a rate of 10% by weight. Specially designed for use with spray guns.

PURECAST SLOW CURE EPOXY



A water clear epoxy resin specially designed for use in industrial applications requiring a strong, durable casting where low colour and high UV resistance is required.

PURECAST FAST CURE EPOXY



This fast curing, water clear epoxy resin will cast 10mm without overheating and will naturally degass with no vacuum equipment needed.

METRODECK ROOFING BASE RESIN



Base resin system from CFS, specifically designed for roofing applications. When used in conjunction with Metrodeck topcoat this system has undergone extensive external fire exposure roof tests and achieved fire retardant BS476 Part 3 FAA. Advanced flexible additives increases resistance to thermal expansion, making it suitable for all sizes of flat roof.

RESIN ADDITIVES

STANDARD CATALYST



Catalyst is supplied free with most resin packs. Liquid MEKP. All resins must have catalyst to start the hardening process, added at 1% - 3% by weight. Ideal addition is 2% or 20ml per kg of resin. Catalyst is a corrosive material and must be handled with special care. Never allow catalyst to come into contact with accelerator as this can cause a fire or explosion. See section on hazards. Dispensers are strongly recommended for safe and accurate use.

SLOW CATALYST (Summer)



MEKP reduced strength catalyst. Used for hardening most of our polyester resins, gelcoats, bonding pastes and pattern coating paints.

Supplied complete with built-in 10ml Dispenser bottle.

FAST CATALYST (Winter)



MEKP extra strength catalyst. Used for curing most of our polyester resins, gelcoats, bonding pastes and pattern coating paints. Increases cure speed, particularly during cooler conditions.

Supplied complete with built-in 10ml Dispenser bottle.

WAX SOLUTION



This is used to eliminate the surface tackiness caused by gelcoats and some resins when used as a final coating as in sheathing. Flowcoats and topcoats already contain wax solution so no need to add more. Resins or gelcoats applied with wax solution added will always need to be abraded if further coats are necessary.

STYRENE



This is used to thin resin which may be used as a primer to improve adhesion as in timber sheathing. Resin already contains approx. 35% styrene. For thinning do not use more than 10% addition as this will degrade the resin.

ACCELERATOR



Added in small quantities to polyester resins to speed up cure times. Can also be applied directly to wood prior to applying resin to improve bonding. This is a 1.0% solution of cobalt soap dissolved in styrene. Recommended addition levels are between 0.5% and 2.0%. Never allow catalyst to come into contact with accelerator as this can cause a fire or explosion.

FLEXIBLE RESIN ADDITIVE



Flexible Resin Additive for polyester resin. Mix up to 10% to improve tenacity, elongation, flexibility and impact resistance.

POLYESTER BONDING PASTE



A flexible and smooth polyester bonding paste with a low level of shrinkage. It can be used for bonding GRP, fixing inserts and also as an aid to laminating. Pot life 14-22 mins @ 23°C using 1% MEKP catalyst. Contains colour change catalyst indicator. Catalyst included.

petram EPOXY RESIN



A High Performance Resin for producing composite parts of medium and large size. Manufacturing of structural parts of boats, model aircrafts, racing vehicles, sport components. Makes a superb adhesive when mixed with appropriate fillers. DNV GL type approved laminating resin for use in the construction of marine components.

Choice of two hardeners - medium or fast.

Mixing ratio	Petram : Hardener			
	By weight	100	:	30
By volume	100	:	33	
	Units	Petram	HR	MR
SPEED	-	-	fast	medium
Pot life (200g,25°C)	mins	-	15-25	50-60
Demould time (25°C)	hrs	-	4-6	6-8



WEST SYSTEM



These resins are much stronger than polyesters. High performance fabrics such as carbon fibre and Kevlar™ are used to give excellent strength to weight structures. Epoxy resin is much harder, more chemical resistant and adheres better than polyester resin. West System Multi Purpose Resin is a clear, light-amber, low viscosity epoxy, which, when mixed with the hardener, is formulated to wet out wood, fibreglass and a variety of metals. It can be cured in a wide temperature range to form a high strength solid with excellent moisture resistance. A superb adhesive, 105 resin will fill gaps and bridge voids when modified with fillers and can be sanded and shaped afterwards. With roller applications, it possesses excellent wet film characteristics by flowing out and self levelling. The epoxy mix cures to a clear finish. Supplied in packs containing a choice of hardener.

WEST 105 MULTI-PURPOSE RESIN



West Multi Purpose Resin is a clear, light-amber, low viscosity epoxy, which, when mixed with the hardener, is formulated to wet out wood, fibreglass and a variety of metals. It can be cured in a wide temperature range to form a high strength solid with excellent moisture resistance. A superb adhesive, 105 Resin will fill gaps and bridge voids when modified with fillers and can be sanded and shaped afterwards. With roller applications, it possesses excellent wet film characteristics by flowing out and self levelling. The epoxy mix cures to a clear finish. Supplied in packs containing a choice of hardener.

These resins are much stronger than polyesters, and are used with high performance fabrics such as carbon fibre and kevlar to give excellent strength to weight structures. Epoxy resin is much harder, chemical resistant and adheres better than polyester resins.

Junior Pack 600g, A Pack 1.2kg, B Pack 6kg, C Pack 30kg, E Pack 270kg

WEST SYSTEM BOAT REPAIR KIT



Kit Contents:

250g 105 Resin; 50g 205 Hardener; 1m 450g 125mm biaxial glass tape; 1m 175g 75mm woven glass tape; 1m 100mm peel ply tape; 402 milled fibre filler; 409 microsphere filler; 2 prs gloves; 1 reusable mixing stick; 3 mixing pots; 2 brushes; 2 syringes; instructions.

This new kit compliments the current West System product range and has been developed to assist those who wish to carry out small basic repairs to glassfibre boats. The kit includes everything required to successfully complete a range of repairs. The instructions included with the kit provide detailed, step by step explanations for 4 common repairs to glass fibre boats. These are:

- Repairing minor cracks and scratches
- Repairing cored deck, hull and bulkhead delamination
- Repairing holes and punctures
- Refitting and replacing hardware

WEST SYSTEM HARDENERS

SPECIAL COATING HARDENER



207 Special Coating Hardener is formulated for use with West System 105 resin for coating applications where an extremely clear finish is desired. This hardener also provides excellent adhesion for bonding applications. 207 contains an ultraviolet inhibitor to protect the resin against sunlight. However, the cured epoxy still requires long term protection with a filtered 2 part varnish.

Note: 3:1 Resin:Hardener
207 hardener can be used in conditions from 15°C (Pot life @25°C 20-30 mins)

FAST HARDENER

Fast hardener can be used in conditions from 5°C (Pot life @25°C 10-15 mins)

SLOW HARDENER

Slow hardener can be used in conditions from 15°C (Pot life @25°C 20-25 mins)

WEST SYSTEM MINI PACK

Each resealable pack contains epoxy resin, hardener, 406 & 407 fillers, tools, gloves, cleaning pads and instructions. Ideal for repair work. A comprehensive kit for small repairs.



Contains 250g 105 Resin, 50g 205 Hardener, 403 Microfibres, 407 Low Density Filler, 3 Graduated Cups, 2 Pairs Gloves, 2 Mixing Sticks, 2 Syringes & Instruction Leaflet.

WEST SYSTEM G/FLEX EPOXY

655-K

Kit Contents: 250ml G/flex 655 resin & hardener, 2x stick/applicators, 2x 12cc syringes, 4g adhesive filler, 10x mixing palettes, 1x pair neoprene gloves, 4x alcohol cleaning pads and complete instructions

650-K

Kit Contents: 236ml G/flex resin & hardener, 2x stick/applicators, 2x 12cc syringes, 4g adhesive filler, 4x mixing cups, 1x pair neoprene gloves, 4x alcohol cleaning pads and complete instructions.

650-8

Kit Contents: 118ml G/Flex resin and 118ml G/Flex Hardener

G/flex is a toughened, resilient two-part epoxy engineered for a superior grip to metals, plastics, glass, masonry, fibreglass, and wet and difficult to bond woods. Makes structural bonds that absorb the stresses of expansion, contraction, shock and vibration. Easy-to-use 1:1 mix ratio provides a 45 minute pot life and a long open time of 75 minutes at room temperature. Reaches an initial cure in 3-4 hours and a workable cure in 7-10 hours.

WEST SYSTEM FILLERS

402 MILLED GLASS FIBRE BLEND

A high density, blended filler consisting of loose chopped glassfibres and other fillers. Intended for small semi structural repairs, filling voids, or small scale impact damage to glass fibre laminates. The finished repairs are incredibly strong, tough and resilient. When mixed with West System epoxy at a ratio of approximately 25% by weight, the result is a thick paste that can be carefully stippled into place with PVC tape or peel ply to give a smooth finish to the repair. Typical uses include deep void repair due to osmotic blistering; damage to rudders, centreboards and hard edge impacts.



405 FILLETING BLEND

This strong, wood-toned filler is good for use in glue joints and fillets on naturally finished wood. It mixes easily with epoxy and lets you create fillets that are smooth and require little sanding. Its color is a consistent brown, so 405 can be used to modify the shade of other West System fillers. Add to epoxy mix at 15%-25% by weight. Colour: tan.



409 MICROSPHERE BLEND

A pure white, hollow glass bubble based, low density filler designed for filling and fairing of fibreglass. When the filler is mixed with West System epoxy at a ratio of 10% to 25% by weight, it creates a smooth, creamy paste for filling and fairing over glassfibre repairs. The cured epoxy/filler is very easy to sand. Being white in colour the cured mix will be easily hidden behind paint or polyester gelcoat, but must be protected by further coats of epoxy if used below the waterline.



403 MICROFIBRE FILLER



A blend of cellulose fibres used as a thickening agent for bonding applications. Epoxy thickened with microfibres provides good wetting out of the substrate and excellent gap filling properties. Add to epoxy mix at 4%-16% by weight. Colour: off white.

406 COLLOIDAL SILICA



General Purpose thickening additive suitable for bonding, gap filling and filleting. It can be used to prevent resin flow on vertical and overhead surfaces and to control the viscosity of the epoxy. It is often used in combination with other fillers to control the working characteristics of an epoxy mix, e.g. improve the consistency of fairing compounds. Add 3% to 8% by weight to the resin / hardener mix. Colour off-white.

410 MICROLIGHT FILLER



A low density filler for creating an easily worked fairing compound for large areas. Easiest filler to rub down and holds a feathered edge. Add to epoxy mix at 7%-16% by weight. Colour: tan.

EPOXY RESIN

404 HIGH DENSITY FILLER



404 High-Density filler is a thickening additive developed for maximum physical properties in hardware bonding where high-cyclic loads are anticipated. It can also be used for filleting and gap filling where maximum strength is necessary. Add to resin at a rate of 35% to 60%. Colour: off white.

407 LOW DENSITY FILLER



A blended, micro-balloon based filler used to make fairing putties which are easy to sand down but remain strong. Add to epoxy mix at 20%-40% by weight. Colour: reddish brown.

422 BARRIER ADDITIVE



A blend designed to improve the moisture exclusion effectiveness of West Epoxy and to combat osmosis. Also provides a barrier coating to overcome gelcoat blistering and increase abrasion resistance. Add 20% to 25% by weight.

423 GRAPHITE POWDER

A fine black powder added to the mixed epoxy (10% by volume) to provide a low friction exterior coating with increased scuff resistance. Commonly used on rudders, centreboards or the bottoms of racing craft.

EPOXY PIGMENTS



Add to epoxy mix at 3%-5% by weight to provide a base colour.

White, Black, Blue or Grey.

PEEL PLY



A finely woven fabric treated with a release agent to which epoxy will not adhere. Excellent for reducing subsequent sanding prior to applying more epoxy.

Fabric - 100cm wide
Tape - 50mm wide

CLEANING SOLVENT 850

A specially blended cleaning solvent for removing uncured epoxy from tools, workbenches etc. Also excellent for cleaning contaminants from cured epoxy surfaces.

CLEANING SOLUTION 855

A safe and easy to use cleaning solution developed to remove uncured epoxy from tools, workbenches, minipumps etc. Can also be used to wash off the wax like amine blush which can occasionally appear after applying the epoxy in damp conditions.

WEST SYSTEM FRAMES



Roller frames to fit West System Covers

WEST SYSTEM ROLLER TRAYS

Flexible plastic roller pan allows cured epoxy to 'pop out' so the tray can be re-used.



RUBBER SQUEEGEES



- For spreading resin over flat surfaces
- Heavy duty, solvent resistant rubber
- Custom edges to enhance air relief

2 pack. 90mm x 150mm. Lightweight, reusable squeegees for fairing and filling applications.

WEST SYSTEM DISPENSERS



Calibrated pumps which mount directly onto the resin & hardener containers to ensure accurate dispensing to the correct ratios.

301A for A pack.

301B for B pack.

301C for C pack.

303A pump for special coating hardener.

WEST SYSTEM COVERS



Disposable, thin urethane foam roller, allows greater control over film thickness, is less likely to cause the epoxy to exotherm, and leaves less stipple than thicker roller covers.



Chopped Strand Mats

The most common form of reinforcement used with polyester resin for hand lay-up. Strands of glass fibre are held together by an emulsion binder to form a mat. Supplied on a roll usually 96 cm wide, in grades of various thickness expressed in weight per m².

- Fast wet-out
- Even thickness
- High mechanical strength
- Excellent wet strength retention

**LLOYDS
APPROVED**

Emulsion bound mat is not suitable for use with epoxy based resins. Please order powder bound chopped strand mat.

Available weights: 300g, 450g, 600g, 900g.

CHOPPED STRAND MAT

POWDER BOUND CHOPPED STRAND MAT



The same style as emulsion bound CSM, but held together with a powder binder. When using Epoxy resins with CSM, powder bound must be used. 300gm and 450gm. Approx. 95cm wide

**LLOYDS
APPROVED**

CHOPPED STRAND MAT BANDAGE



450g 75mm wide. Used to bandage or seal the edges of roof trim fascias and decking in fibreglass roofing.

SURFACE TISSUE 30g



A thin glass fibre mat in a form similar to tissue paper. Supplied on a roll 1m wide and only 25-30 grams per m². During moulding it is used to cover up the coarse glass pattern produced by CSM. When sheathing it can be applied onto the CSM while the resin is still wet, again to cover the glass pattern and form a smooth surface for the flowcoat to be applied. Uses 100g of resin per m².

Have you ordered enough resin?

Calculating Resin Required:

Chopped Strand Mat
(Emulsion and Powder Bound)
2.5kg of resin to each 1kg of mat.

Tissue
100g of resin to 1m² of surface tissue.

For polyester resins, turn to page 3

For epoxy resins, turn to pages 14-17

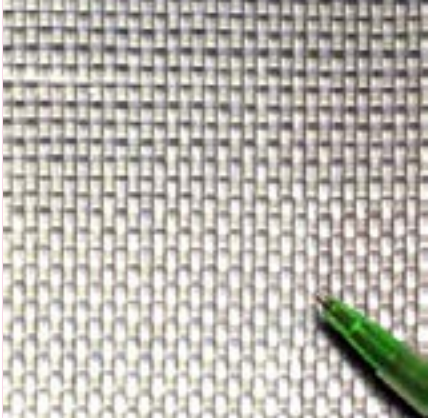
FIBREGLASS TAPE



This is simple woven cloth in tape form, supplied in roll widths of 25mm to 150mm, weighing 175g/m².

GLASSFIBRE FABRICS

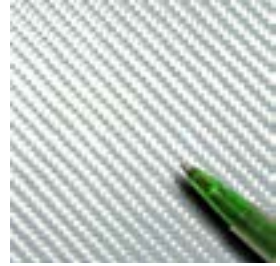
WOVEN ROVING FABRIC



Supplied on a roll, usually 1m wide in grades of various thickness. It is not twisted, is easier to wet out and drapes fairly well. As it costs less than fabric, it is often used for boat building in conjunction with CSM to increase flexural strength. Fabric laminates use approx. 1kg resin to 1kg fabric.

300g or 600g.

TWILL WEAVE FABRIC



Twills have one or more warp fibres alternatively woven over and under two or more weft fibres, giving a diagonal rib or zig zag style pattern. Superior wet out and drape to equivalent weight plain weave with only a small reduction in stability.

2x2 Twill Fabric 280gm, 100cm wide

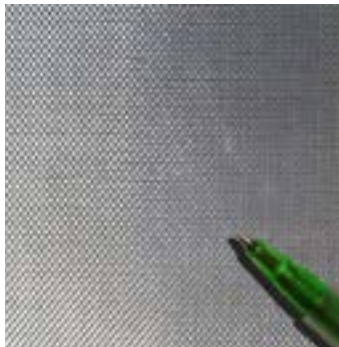
PLAIN WEAVE FABRIC

Cloth is made from "Yarn" (twisted glass filaments) generally to produce a lightweight laminate with uniform thickness from approx. 100g per m². Fabrics will flex more than CSM before breaking but are not as rigid. The best strength comes from the thinnest cloth with the tightest weave which tends to make them difficult to wet out, and so for fabrics above 275g per m², woven roving is used.

Adhesion between 2 layers of fabric is poor and should be avoided.

Bonding is improved with thicker cloth and fewer layers or combining with CSM.

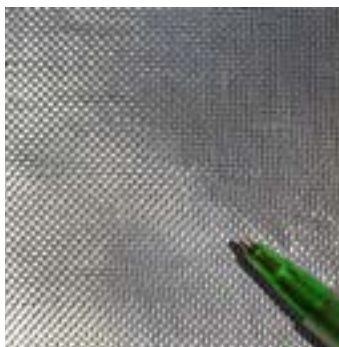
48g FABRIC - 103cm WIDE



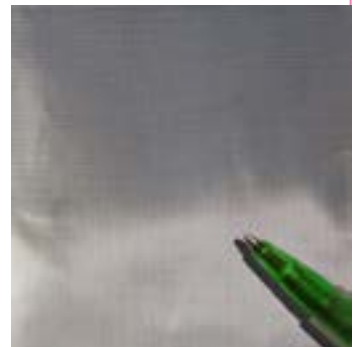
123g FABRIC - 107cm WIDE



163g FABRIC - 100cm WIDE

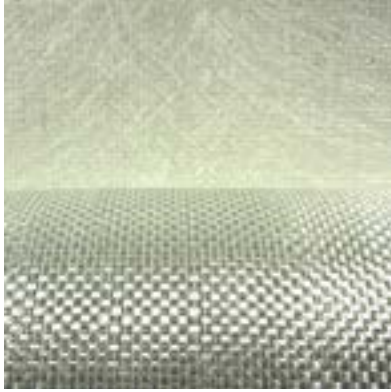


200g FABRIC - 100cm WIDE



GLASSFIBRE FABRICS

COMBINATION MAT



A glass fibre reinforcement combination fabric consisting of bi-directional woven rovings one side with a chopped strand mat stitched to other side with a fine polyester yarn.

Available in 600/300, 800/300, 800/450.

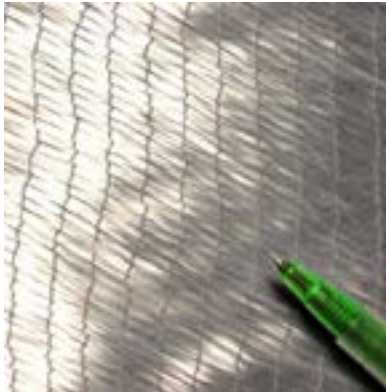
COREMAT



Spherecore is a microsphere filled, random laid, polyester core fabric with excellent conformability, which is used as a laminate bulking and print-control mat. Should always be sandwiched between CSM. Each square metre x 1mm thickness will absorb approx. 600g of resin. Supplied in rolls 1 metre wide.

Available in 2mm, 3mm or 5mm thickness.

BIAXIAL FABRIC



Biaxial fabric consists of 2 layers which are unwoven, lightly stitched and orientated +/- 45o. Available in 450g/m² and 600g/m². Roll width 1270mm.

450g Biaxial Fabric - 1kg=2.22m²

600g Biaxial Fabric - 1kg = 1.6m²

SURFBOARD CLOTH



CFS surfboard fabric is specifically designed for surfboard manufacturing and repair. CFS cloths are known for their superior wetting out characteristics, strength, clarity and excellent drape. Manufactured in the UK.

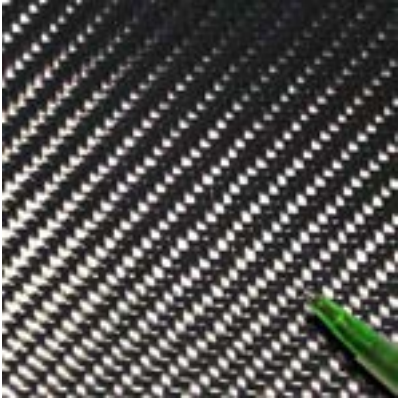
Also available - Aerialite Surfboard Cloth

Available in 4oz and 6oz.



Image courtesy of Jackson Higgs - Bluff Longboards

CARBON FIBRE FABRIC



A superior fibre that has increased stiffness and flexural strength over ordinary glass fibre. Used with resin to form a high performance composite. For best results use with epoxy resin. It will weave carbon has excellent drapeability and will conform well in compound curves. Choose plain weave carbon for higher stiffness panels.

CARBON FIBRE TAPE



The best and most costly reinforcement available for strong light weight structures with good fatigue and vibration resistance, low friction and good resistance to wear. Note: These tapes are not self adhesive.

Available in 50mm, 75mm or 100mm.

KEVLAR™ FABRIC



A high performance nylon type reinforcement giving a superior strength to weight ratio than glass fibre. It will provide up to 40% reduction in weight than glass fibre but is considerably more costly. Kevlar being difficult to cut requires a very sharp knife or specialist shears. Kevlar does not become translucent like glass. Polyester resins can be used but for maximum performance epoxy resin gives the best results. Usually available in 1m wide rolls or tape form

KEVLAR™ TAPE



A high performance nylon type reinforcement with incredible tensile strength over glassfibre. Kevlar is difficult to cut so requires a very sharp knife or composite shears. Kevlar does not become translucent like glass. Polyester resins can be used but for maximum performance epoxy resin gives the best results.

CARBON KEVLAR™ MIX FABRIC



100cm wide fabric made from Carbon and Kevlar strands interwoven as a plain weave fabric.



Image courtesy of Phil Annear - Kernow Kayaks

FILLERS

METALLIC JEWELS

Sprinkled on the back of clear gel for glitter mouldings or use just like normal glitter. Great value : 250g of loose jewels is over 500ml in volume! Large 0.15" Hex flakes.

Colours available:

Apple Red
Fire Red
Chrome Silver
Canadian Blue
Stratosphere
Emerald Green
Dark Gold
Brilliant Rose



MILLED GLASS



Finely milled fibreglass strands which when mixed with resin will improve the mechanical properties, heat resistance and reduce shrinkage. Silane coated for good compatibility with polyesters, epoxides, phenolics and urethanes.

CHOPPED STRANDS



Chopped Strands are glass fibre strands approximately 6mm long that can be mixed to resin to make a dough like mixture which is extremely strong. For a dough mix, add strands to a very small amount of resin and squeeze out the air, then add to the main body of resin. Also used as a fillet "sprinkled" into sharp internal corners during laminating.

SLATE POWDER



Very fine ground welsh slate powder. Add to clear resin when casting for decorative finish.

MICRODOL H600



A fine white filler powder used in resin casting. Being white, it maintains the colour when pigments are used.

COLLOIDAL SILICA



A feather weight thixotropic powder, which is used to thicken resin & gelcoat and for bonding & filleting applications. Laminating resins contains approx. 1% by weight, gelcoats approx. 3% by weight to avoid draining before it has hardened. As gelcoat cannot be used with flexible rubber moulds because of air inhibition, resin can be thickened with colloidal silica to produce a non-air-inhibited gelcoat.

FILLITE



An excellent lightweight filler consisting of tiny hollow microspheres. Good for initial filling of large areas and easier than talc to sand down. Resin dramatically increases in volume when mixed with fillite. Also used for bedding down timber and steel ribs to laminate. Also used in resin casting to reduce weight and heat generated in large castings.

GLASS BUBBLES



Micro cellular hollow fibreglass particles for adding to resin as a filler reinforcement for easy to sand lightweight filling. White in colour.

Q-CELL LIGHTWEIGHT



Q-Cell consists of hollow inorganic microspheres with exceptional whiteness and low bulk density. It can be used as a volume extender or easy sanding filler when mixed with resin. Add from 0.5% - 10% by weight as a resin extender and up to 20% for paste consistency.

CARBORUNDUM GRIT



Carborundum grit is used to produce an extremely hardwearing non slip surface when sprinkled onto a final gelcoat or topcoat surface while still wet. Especially useful on workboats where severe abrasion to the GRP laminate is caused by ropes and chains. A laminate with Carborundum grit cannot be drilled or cut. Supplied as Grade 20 (coarse grade).

TALC



Used in resin casting to reduce cost, shrinkage & heat generated by resin curing. The more filler added to resin, the stiffer the mix. Catalyst should be added before filler powder. Dark grey in colour.

METAL POWDERS

Metal powders are added to resin to produce realistic metallic finishes in cold casting. The higher the addition of metal, the better the finish, but generally mix at the rate of 50 parts filler to 50 parts resin. For economy, the powder can be added to the resin used for the outer surface only. When cured the main body can be filled with resin and a more economical filler such as talc. When removed from the mould it can be burnished with wire wool and metal polishes. Different metal powders can be mixed before adding to the resin for creative effects.



Aluminium



Bronze



Brass



Copper



Iron

PRE-MIXED FILLERS

EASY SAND BODY FILLER



A rapid hardening filler with soft sanding properties that provides a smooth surface. Bonds well to metal, GRP (fibreglass) and wood. Takes all types of paint. Pack includes hardener and plastic spreader card.

BPO FILLER HARDENER



Red coloured hardener for all body fillers that use BPO catalysts.

SODAL POLYFIBER GLASS FILLER



High quality, glass fibre reinforced, two component polyester body filler for the repair of damaged surfaces in metals, wood or polyester. Very easy to mix and apply. Fast curing and can be sanded after about 20 minutes. The glass fibres add additional strength to weakened car body parts.

SUPERLITE EASY SAND BODY FILLER



SUPERLITE EASY SAND

A lightweight polyester general purpose fairing/filling paste for GRP, wood and metal. Superlite filler cures quickly to provide a flexible easy sanding substrate for further coating. Resistant to cracking and breakouts at thicknesses up to 20mm while still achieving full cure at low film thickness. Pack includes BPO hardener and spreader card.



Image courtesy of Audiosport

FOAM AND CORE MATERIALS

2 PART POLYURETHANE FOAM LIQUID



A 2 part liquid foam when mixed together in equal parts can expand up to 25 times its original volume and set rigid. It is extremely buoyant. 1 cubic foot will support 27kg in water and will bond well to most materials. It should always be protected by a GRP skin because, although closed cell and water-proof when set. It will absorb water when crushed. 1kg of liquid foam = 1 cubic foot when expanded under conditions of 18°C. Lower temperatures produce less foam.

AEROSOL POLYURETHANE FOAM



An assembly and filler foam. Each 500ml tin gives a yield of about 22 litres.

B1 Foam with CFC free propellant is a one component, self-expanding, ready to use polyurethane foam. Ideal for installing of window and door frames, filling wall cavities, sealing around pipes and cables. Excellent adhesion, insulation and sound deadening properties. Provides up to 4 hours fire retardancy.

B2 Foam with CFC free propellant is a one component, self-expanding, ready to use polyurethane foam. Ideal for installing of window and door frames, filling wall cavities, sealing around pipes and cables. Excellent adhesion, insulation and sound deadening properties. Fire rated to B2 (DIN 4102-Part 2).

B3 Foam with CFC free propellant is a one component, self-expanding, ready to use polyurethane foam. Ideal for installing of window and door frames, filling wall cavities, sealing around pipes and cables. Excellent insulation and sound deadening properties.

POLYURETHANE FOAM SHEET



Rigid sheets of expanded closed cell foam available from 1" to 4" thick (25-100mm), which can easily be cut and shaped to make ribs or formers over which glassfibre can be laminated. Resistant to all resin types.

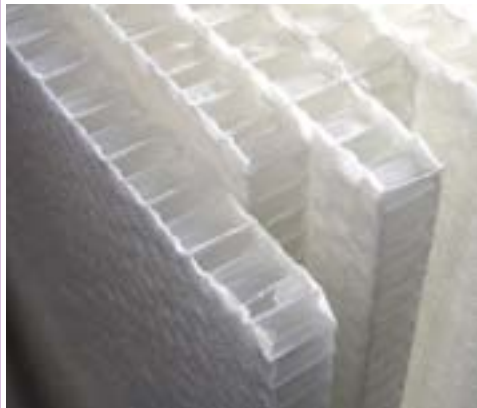
1220x1220mm sheets.
12mm, 25mm, 50mm, 75mm, 100mm thickness

ETHAFOAM SHEET



A flexible polyethylene foam sheet which does not crush is easy to cut and does not react with resin. The foam bends which makes it ideal for creating ribs in hulls.

THERMHEX



Polypropylene (PP) honeycomb cores are a strong but flexible lightweight material that provides optimal mechanical performance in composite sandwich structures.

ThermHex PP honeycomb cores are produced in a continuous in-line production process by extrusion of a polypropylene film, vacuum forming and folding and includes also the lamination of non-woven layers and barrier films onto the core.

The optimized cell size and the specific structure of ThermHex honeycomb cores offer an exceptional surface quality in sandwich components even with very thin skin material layers.

1250x1220mm sheets
6mm, 10mm, 15mm, 20mm, 25mm thickness

TOOLS

RESIN BRUSHES - SINGLES



These inexpensive but quality brushes are designed for use in GRP. They have natural coloured bristles, plastic handles and are completely resistant to resins and acetone.

12mm, 25mm, 38mm, 50mm, 75mm, 100mm

RESIN BRUSHES - BOXES OF 12



Plastic handle brushes in boxes of 12.

12mm, 25mm, 38mm, 50mm, 75mm, 100mm

LOW COST ECONOMY BRUSHES



These low cost brushes are designed for use in fibreglass. Completely resistant to resins and acetone. Natural coloured bristles and wooden handles.
Box of 12 only.

12mm, 25mm, 38mm, 50mm, 75mm, 100mm

APPLICATION ROLLERS

Fluffy rollers for applying resins, gelcoats and topcoats.

BLUE STRIPE ROLLERS



- Deep 18mm pile refill, holds more resin
- 100% polyamide fibres
- Resin resistant, lasts even longer!
- Quick push fit

100mm - 250mm wide

VELOUR ROLLERS



- Short 4mm pile height 100% wool refill.
- Especially designed for application of gelcoat
- Neutral pale cream colour
- Quick push fit

100mm - 250mm wide

ROLLER FRAMES



- High Quality steel arm frames
- Simple push fit into rollers
- Screw thread inner handle

100mm - 250mm wide

ECONOMY ROLLERS



Medium pile economy resin application rollers, ideal for single use.

75mm - 225mm wide

ROLLER TRAYS



Wide plastic roller tray compatible with all resins.

100mm, 200mm

TELESCOPIC EXTENSION HANDLE



Metal extension pole supplied complete with screw on adaptor to allow easy use with tapered handle if preferred.
Length 825mm.
Extends to 1390mm.

CONSOLIDATING ROLLERS

Metal rollers used for remaining air bubbles and “squeezing” the resin and glass together. Can be cleaned with acetone before the resin hardens.

PADDLE ROLLERS

- Effective air relief on all fabrics
- Particularly effective with chopped strand mat
- Completely solvent proof
- Quality lightweight aluminium



50mm - 225mm wide

FINNED ROLLERS

- Excellent air relief in nearly all applications
- High grade aluminium fins
- Completely solvent proof



35mm - 140mm wide

DISC ROLLERS

Also known as a “penny rollers” used to remove entrapped air from sharp internal corners.



WASHER ROLLER

This consists of a series of steel washers separated by smaller washers mounted on a steel spindle



PTFE ROLLERS



- Traditional deep fin, straight groove design
- Heavy duty ferrule reinforced textured handle
- Handles threaded to accept standard extension handles
- Completely solvent proof
- Easier to clean than aluminium

38mm - 112mm wide

BOLT ROLLERS

These are basically a drilled length of steel rod with a threaded outer similar to a bolt with the head removed.



50mm x 10mm
140mm x 20mm

BRISTLE ROLLERS

Consists of a coil of stiff bristles suited for rolling convex shapes and thin mats and cloths.



50mm x 21mm
112mm x 22mm
152mm x 25mm

BUBBLE BUSTER PADDLE ROLLERS



Paddle rollers are the cheapest and most popular consolidation rollers. Particularly effective with chopped strand mat (CSM) these paddle rollers can consolidate several layers at a time, extracting air and increasing the strength of laminates. Horizontal flutes allow extra pressure to be applied without shearing glassfibre strands.

75mm x 21mm
140mm x 21mm
225mm x 21mm

RETRACTABLE HI-VIZ KNIFE 150mm

- Top quality thick aluminium body
- Rubber inserts for secure grip
- Includes heavy duty blade



18mm HEAVY DUTY SNAP OFF KNIFE

- Auto-Reloading
- Rubber grip handle
- Complete with 6 blades



18mm SNAP OFF BLADES



18mm Snap Off Replacement Blades – Pack of 10

QUICK RELEASE FIXED BLADE KNIFE

- Classic fixed blade metal bodied knife
- On board blade storage system
- Includes heavy duty blade



HEAVY DUTY BLADES



Supplied in safety dispenser Pack of 10

TOOLS

KEVLAR SHEARS



High carbon steel scissors with high leverage. Xylan low friction coating suitable for cutting Kevlar, carbon fibre and resin coated composites, both wet and dry

WILKINSON SHEARS



High carbon steel scissors with high leverage. Xylan low friction coating suitable for cutting Kevlar, carbon fibre and resin coated composites, both wet and dry

HEAVY DUTY SCISSORS 140mm



SILVERLINE
Small stainless steel scissors with precision-ground blades. Lower blade is serrated for extreme cutting requirements, makes short work of glassfibres, carbon and even kevlar.

CORDLESS UNIVERSAL CUTTER 3.6V



The fast and easy way to cut glassfibre fabrics, mats and carbon fibre cloths.
Pack includes charger and spare cutting head.
3.6V Li-Ion battery.
Charge time 3-5 hours.
Additional cutting heads available separately.

ACETONE TAP LOCKABLE 20MM



20mm lockable cast brass tap which fits the 20mm threaded hole on standard (205 litre, 45 gal) steel barrels.

DRUM TAP



A high quality 50mm opening resin tap that fits standard (205 litre, 45 gal) steel barrels. Made from cast iron, solid steel handle and gunmetal slide.

DRUM SPANNER



Large spanner for removing drum taps from 45 gallon barrels.

DRUM BUNG REMOVER

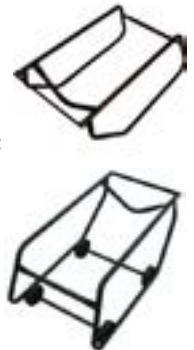


Special tool designed to remove the 20mm and 50mm bung from 45 gallon barrels.

DRUM STANDS

These are made from welded tubular steel. They are fitted to the barrel while stood vertically and assist in tipping the barrel to its final horizontal position. They provide efficient storage, lifting and transporting facilities for cumbersome (205 litre, 45 gal) steel barrels.

Available with or without wheels.



TOOL PACKS

General Moulding

TP1 TOOL PACK - LARGE PROJECT



2 Operators
 4x 6" med.pile cups, 4x 6" short pile refill, 2x 6" roller arms, 50 pairs surgical gloves, 2x 6" paddle rollers, 1x 3" paddle rollers, 1 standard knife, 4x graduated cup 1.2litre, 1x 80ml catalyst dispenser, 4x 11 litre buckets, 2x 3 litre buckets, 4x 4" brushes, 4x 3" brushes, 2x 2" brushes, 50x dust masks, 1x hand cleaner, 25 litres acetone.

TP2 TOOL PACK - MEDIUM PROJECT



1 Operator
 4x 6" med.pile cups, 2x 6" short pile refill, 1x 6" roller arms, 50 pairs surgical gloves, 1x 6" paddle rollers, 1 standard knife, 2x graduated cup 1.2litre, 1x 80ml catalyst dispenser, 2x 11 litre buckets, 1x 3 litre buckets, 2x 3" brushes, 4x dust masks, 1x hand cleaner, 10 litres acetone

TP3 TOOL PACK - GENERAL PROJECT



1 Operator
 50 pairs surgical gloves, 1x 3" paddle rollers, 1 standard knife, 2x graduated cup 1.2litre, 1x 15ml catalyst dispenser, 2x 3litre buckets, 2x 3" brushes, 2x dust masks, 2.5 litres acetone.

TP4 TOOL PACK - BASIC PROJECT



1 Operator
 50 pairs surgical gloves, 1x 3" paddle rollers, 1x graduated cup 1.2litre, 1x 50ml syringe, 1x 1litre buckets, 2x 2" brushes, 100x mixing sticks, 1x dust masks, 1 litre acetone.

TOOL PACKS

Roofing and Pond Lining

We have compiled tool packs based on the most popular items bought for roofing and pond lining. Items in these tool packs can be ordered separately.

Small tool pack (TP5) ideal for roofs and ponds upto 40m². Large tool pack (TP6) for roofs and ponds up to 100m².

TP5 TOOL PACK - SMALL PROJECT



1 Operator
 1 x box (50 pairs) surgical gloves, 1x 140x21mm paddle roller, 1x 75x21mm paddle roller, 4x 150mm deep pile resin roller refills, 2x 150mm short pile topcoating roller refill, 1x 150mm roller arm, 2x 75mm brushes, 3x 5 litre buckets, 1x graduated measuring cup, 2.5 litre acetone, 1x telescopic extension arm, 1x 250ml liquid hand cleaner

TP6 TOOL PACK - LARGE PROJECT



2 Operators
 1 x box (50 pairs) surgical gloves, 2x 225x21mm paddle rollers, 10x 180mm deep pile resin roller refills, 5x 180mm short pile topcoating roller refills, 2x 180mm roller arms, 2x 75mm brushes, 5x10 litre buckets, 5 litre acetone, 2x telescopic extension arms, 1 litre paste hand cleaner

RASPS 3 PACK



Flat, half-round & round rasps*. Polypropylene soft-grip handles. Hardened blade.

Each pack contains one of each size.

COPING SAW AND 5 BLADES



Heavy gauge frame. 360 blade angle adjustment. Includes 5 assorted blades.

HEAVY DUTY HACKSAW 300mm



General purpose hacksaw. Cast aluminium handle. Square section steel frame. Wing nut blade tensioner.

300MM HACKSAW BLADES 24 PACK



HEAVY DUTY JUNIOR HACKSAW



Die-cast aluminium frame. Multi-positional blade. Cushion grip handle, includes blade.

JUNIOR HACKSAW BLADES 10 PACK



Carbon steel junior hacksaw blades. Strong, flexible, long life.

115mm PRO DIAMOND RIM BLADE



Electroplated diamond blades for heavy duty cutting and grinding of finished fibreglass and carbon fibre laminates. These blades cut straight in thick laminates and allows cutting of curves without jamming. Side spoked version cuts even thicker fibreglass. 115mm diameter x 22mm bore. Attaches to standard grinder.

115mm CONTINUOUS RIM BLADE



115mm x 1.2mm x 22mm
Expert quality blade designed with X-Tech Cutting technology for GRP, porcelain cutting as well as a range of tile and ceramic cutting applications. The continuous X-Tech rim blade offers a combination of long life, clean cutting, and excellent value.
Suitable for use on GRP, Ceramic, Porcelain and Slate.

13 PIECE METRIC DRILL BIT SET

High speed steel, For use on metal, plastic, fibreglass and wood. Drill bit sizes 2, 2.5, 3, 3.5, 4, 4.5, 5, 5.5, 6, 6.5, 7, 7.5 & 8mm, Durable metal storage case.



RESIN CARTRIDGE APPLICATOR GUN



Heavy-duty gun with strong steel skeleton frame with quick-release trigger for instant pressure release. For polyester resin fixing systems.

30 PIECE JIGSAW BLADE SET



Comprehensive 30 piece set, Bayonet fitting, 4 types of wood blades, 2 types of metal / plastic blades.

MEASURE MATE TAPE



19mm x 5m Long

PORTASPRAY G660 SPRAY GUN



Specifically designed to spray gelcoats and resins the G660 is lightweight and user friendly. New design makes for an easy cleaning, extremely versatile gun with superb spray quality and surface coverage. Includes 1 litre capacity container and 4.5mm nozzle.

Consumption CFM: 7-12. -- Air Pressure: 50-80 psi

TARPAULIN



Multi purpose lightweight, washable, durable, rot proof, tear and stretch resistant. Aluminium eyelets every metre around the edge.

Mini - 3.6m x 3.0m

Midi - 3.6m x 5.2m

Maxi - 7.0m x 5.2m

PLASTIC SPREADER CARDS

Spreader card for filler work. Made from high density plastic so can be re-used many times. 105mm x 70mm.



INDUSTRIAL SCRAPER



75mm Blade

RUBBER SQUEEGEE



6" / 150mm Rubber Squeegee

For spreading resin over flat surfaces. Heavy duty, solvent resistant rubber. Custom edges to enhance air relief.

DEMouldING WEDGES



Deluxe Wedges for longer life. Made from quality Polyethylene.

Sizes available:

100x37x12mm

150x50x18mm

250x45x20mm

250x80x25mm

250x80x25mm (Flexible)

FILLETING TOOLS



A set of 6 different chrome plated filleting spheres for creating quick and accurate plasticine or filler fillets.

3 pair set. Steel shaft, brass balls and nickel plated finish. Ball diameters. 1/4", 3/8", 1/2", 5/8", 3/4" & 1"



Silverline DIY power tools offer reliable tools at excellent value for money. This range gives the enthusiast or trade the opportunity to get maximum performance for minimal outlay. All power tools come with an optional 3 year guarantee. (product registration required)

All Silverline power tools come with the free option of an extended guarantee period. To activate this guarantee you must register the product at www.silverlinetools.com within 30 days of purchase.

SILVERSTORM SANDER POLISHER 1500W



The Silverstorm Sander and Polisher is perfect for a multitude of abrasive tasks, but is most widely used for polishing and buffing bodywork on cars, vans and boats.

Featuring a gutsy 1500W motor, it gets to work on your chosen application with vigour. A variable speed dial adjusts the output to suit your specific needs and, when combined with the soft-start trigger action, allows for total control of the tool's capabilities. Nicely balanced and with a large handle, the Silverstorm Polisher/Sander offers good stability with a comfortable working position. Accepts 180mm hook and loop sanding discs of varying grit, perfect for use on large areas where time is of the essence.

300W CORDED MULTICUTTER



Versatile corded oscillating tool with 6-stage speed adjustment and vibration-reducing soft-grip handle. Ideal for multiple tasks including cutting, sanding and grinding. Includes blade, scraper, sanding base and 4 x sanding sheets.

180MM SANDER POLISHER 1200W



Powerful 1200W Sander Polisher with variable speed control and large 'D' handle. For sanding, polishing and buffing.

Includes back pad, wool bonnet and sanding disc.

Cable length: 2m

130W DETAIL SANDER



Compact detail sander with orbital action for use in confined spaces and hard-to-reach corners. Palm-shaped soft grip reduces vibration for optimum user comfort and control. Dust extraction port connects to a vacuum cleaner or dust extraction system. Uses 140mm hook and loop detail sanding sheets for quick changing and secure fitting.

180W DETAIL SANDER



Powerful Detail Sander with dust extraction facility. Uses hook and loop-backed abrasives. Pad size 90 x 90 x 90mm. No load speed 10,000rpm. Cable length 1.6m.

Also available:

90mm Triangle sanding sheets
10 pack
60, 120 and 240 grit

HOBBY GLUE GUN

SILVERLINE



Multi-purpose – sticks wood, plastics, foams and more. Smooth trigger action. Integral fold away stand. Includes 2 x 100mm x 11.2mm glue sticks.

Also available: pack of 50 glue sticks.

2000W HOT AIR GUN

SILVERLINE



2 heat settings, lightweight for easy handling. Paint scraper included. Nozzle selection included.

135W HOBBY TOOL

SILVERLINE



Variable speed control. 2-size collect chuck (2.3-3.2mm). Blow moulded carry case. Extensive kit including grinding stones, polishing wheels, cutting & sanding discs plus much more!

13mm Power File 260w

SILVERLINE



Adjustable file arm angle, variable speed control and quick tensioning system. Includes 2 belts (80 & 120 grit).

Accessories

13mm x 457mm powerfile sanding belts 5 pack. Aluminium oxide, fully resin bonded, fits all 457 x 13mm powerfile sanders.

CODE	SIZE	PRICE
MABSBE-040	40 grit	£1.14
MABSBE-060	60 grit	£1.14
MABSBE-080	80 grit	£1.14
MABSBE-120	120 grit	£1.14

CODE
TPTPBF-260

PRICE
£37.30

DRILL SANDING & POLISHING KIT

SILVERLINE

6 PIECE DRILL SANDING & POLISHING KIT



Hook & loop polishing kit suitable for most power drills. For sanding and polishing wood, metal, paintwork and plastics.

Includes plastic backing pad with 6mm arbor diameter, polishing sponge, lambswool bonnet and 3 sanding discs (180, 240 and 400 grit).

Max 3,250rpm.

MIXING EQUIPMENT

GRADUATED CUPS



Strong & flexible Polypropylene Graduations; ml, 2:1, 3:1, 4:1 & 5:1 Self Releasing - Can be re-used

385ml, 1400ml

SMALL CUPS AND BUCKETS



Ideal for mixing resins and cleaning tools in acetone. Also unaffected by resin and can be reused by "cracking out" old resin build up. Lids can be supplied separately.

550ml, 1180ml, 1L

LARGE BUCKETS



Ideal for mixing resins and cleaning tools in acetone. Also unaffected by resin and can be reused by "cracking out" old resin build up. Lids can be supplied separately.

3L, 5.6L, 10L (rectangular), 11L, 30L

PAPER CUPS



Manufactured from premium, food grade, double poly-coated paper. Ideal for single use resin mixes or even party drinks!

Pack of 10.

MIXING BOARDS



Mixing board for body fillers. 210mm x 250mm comprising of a hundred of removable paper sheets that ensures you have a clean surface to mix fillers every time.

SYRINGES



These syringes are marked with 1ml increments, making them ideal for measuring catalyst in small resin mixes.

Available in 10ml or 50ml

MIXING STICKS



Wooden tongue depressors, for smaller mixes. Pack of 100.

Turbomix paddle 300mm (black)

Single 280mm Polypropylene Mixing Stick (blue)

SCALES



Hanging Scales: weighs metric & imperial up to 100kg. Large dial display. Robust metal casing.

Digital Scales: weighs metric & imperial up to 5kg. Precise readings in 1g/0.1oz increments. Tare function & auto reset function. Auto power off. Requires 2x AA batteries (not included)

CATALYST DISPENSERS

These flexible polythene bottles allow single handed operation to accurately dispense liquid such as catalyst into an engraved calibrated output chamber. Safety cap ensures safe dispensing. 15ml bottle dispenses 1-15ml and holds 500ml. 80ml bottle dispenses 10-80ml and holds 1000ml. Note 1ml=1cc=1mg.

For large users of catalyst, as in fibreglass factory production, a professional wall-mounted 100ml Catalyst Dispenser is recommended. For wall mounted dispensers please call for more information.

15ml, 80ml



PROTECTIVE EQUIPMENT

KLEEN ALL LIQUID



A powerful liquid version of the renowned Kleenall Paste, Kleenall Liquid is an easily dispensed poly-beaded hand cleaner that provides impeccable performance for professionals in the painting, printing, chemical and engineering areas.

250ml, 5L

KLEEN ALL PASTE



The original Kleenall Paste is lightly perfumed and free rinsing, Kleenall Paste is a pleasant and easy to use paste that has become the market leading product for the removal of paint, resins and adhesives.

1L, 5L

SURGICAL NITRILE GLOVES



Powder and Latex free high strength surgical glove. Ambidextrous with beaded cuff.

Medium, Large, X-Large

BARRIER AND CONDITIONING CREAMS

O'Keefes Working Hands, a highly concentrated proprietary formulation developed by a pharmacist to stimulate the skins natural repair process. It contains a high concentration of Glycerin that draws in and retains moisture which is necessary for skin to heal. Another key component is Allantoin, an odourless, non-toxic and non-allergenic skin-protectant derived from the Comfrey plant. It removes dead skin cells to allow for better penetration and absorption of moisture and moisturizing ingredients. All part of O'Keefes revolutionary 3 Step Process that relieves dry, damaged skin.



Kleen All - We are proud to offer a premium quality conditioning cream that moisturises the skin to prevent against cracking and chafing. Kleenall protect also provides a barrier against dirt and enables easier cleaning which means that less aggressive hand cleaners are needed. Then after work, Kleenall Protect is perfect to make your hands feel your own again.

SURGICAL LATEX GLOVES



A lightweight disposable natural latex glove, lightly powdered. Non-sterile and ambidextrous with beaded cuff. Size Medium or Large.



INDUSTRIAL MARIGOLD GLOVES



Super tough marigold gloves which combines great flexibility with excellent chemical resistance to resins and solvents. Long cuff and heavier weight. The gloves are flock lined for comfort with a raised pattern on palm and fingers for grip. Beaded cuff for tear resistance and easy pull on.

Small, Medium, Large

RED PVC GLOVES



Heavy weight PVC gloves, knitted wristbands. CE type tested and certified. Size-Large.

PROTECTIVE EQUIPMENT

COVERALL WITH HOOD



Protective overalls made from breathable fabric, offering protection against splashes and hazardous dusts. Rated CE category III (European standard type 5 & 6). Effective barrier against dust particles and liquids in fibreglass and composite manufacturing.

- L (Chest up to 108cm - Height up to 180cm)
- XL (Chest up to 116cm - Height up to 188cm)
- XXL (Chest up to 124cm - Height up to 196cm)
- XXXL (Chest up to 132cm - Height up to 204cm)



SILVERLINE SAFETY GLASSES



Impact and scratch-resistant polycarbonate. Wraparound design for maximum visibility and eye protection. Comfortable, moulded nosepiece. Adjustable side-arm length. Conforms to EN166.

SAFETY GLASSES



Impact and scratch-resistant polycarbonate. Wraparound design for maximum visibility and eye protection. Comfortable, moulded nosepiece. Adjustable side-arm length. Conforms to EN166.

ECONOMY SAFETY GOGGLES



Soft flexible PVC frame. Polycarbonate lens. Wide vision. Direct ventilation. Conforms to EN166

GERSON 9000 SERIES RESPIRATOR



- Dust and vapour protection
- Twin inhalation valves
- Replaceable Filters

The Gerson 9000E2B Series Respirator is a low maintenance half mask designed for effective and comfortable protection against certain gases, organic vapour and particulate hazards found throughout industry. Detachable, replaceable filters for economy.

GERSON PARTICULATE FILTER PACK



Pack contains 10x Gerson G01E2 replacement filters to fit 9000E2B series half mask

GERSON FILTER PACK OF 2



Pack contains 2x Gerson G01E2 replacement filters to fit 9000E2B series half mask

MOULDED VALVED FACE MASK FFP3



- FFP3 disposable mask
- Up to 50x protection
- For use against toxic dust, fibres and aqueous mists
- Moulded & valved for comfort

3M VAPOUR RESPIRATOR 4251



- Integral construction gas and vapour protection
- Twin inhalation valves to reduce breathing resistance
- Supplied in a hermetically sealed foilbag to extend shelf life and prevent contamination
- Meets european standard EN405:2002 for valved filtering half masks respirators for gases or gas and particulate combinations

PARTICLE MASK 50 PACK



Disposable nuisance dust mask.

Safety in the workplace

The pictograms for labelling chemical products have changed. Prevent workplace injury and diseases by learning more about the pictograms.

Be aware of what these two similar pictograms mean. This one warns against **flammable gases, aerosols, liquids and solids**:

- ◇ Self-heating substances and mixtures
- ◇ Pyrophoric liquids and solids, that **may catch fire when in contact with air**
- ◇ Substances and mixtures which, **in contact with water, emit flammable gases**
- ◇ Self-reactive substances or organic peroxides that **may cause fire when heated**



If you find this pictogram on the label it means you are dealing with **oxidising gases, solids and liquids**, which can **cause or intensify fire and explosion**.



A substance or mixture with this pictogram has one or more of the following effects:

- ◇ **Is carcinogenic**
- ◇ **Affects fertility and the unborn child**
- ◇ **Causes mutations**
- ◇ Is a respiratory sensitiser, may cause **allergy, asthma or breathing difficulties when inhaled**
- ◇ **Is toxic to specific organs**
- ◇ Aspiration hazards, **may be fatal or harmful if swallowed or if it enters airways**



Know that you are handling a chemical that is **acutely toxic** in contact with skin, if inhaled or ingested, which may even be **fatal**.



Whenever you use a chemical with this pictogram on it, be aware that it is **corrosive** and can cause **severe skin burns and eye damage**. It is also **corrosive to metals**.



This pictogram warns that a substance is **hazardous to the environment** and causes **aquatic toxicity**.



This pictogram means one or more of the following:

- ◇ **Acutely toxic (harmful)**
- ◇ **Causes skin sensitisation, skin and eye irritation**
- ◇ **Respiratory irritant**
- ◇ **Narcotic, causes drowsiness or dizziness**
- ◇ **Hazardous to the ozone layer**



MOULD PREPARATION

SLICK MOULD RELEASE WAX 400G



Slick Mould Release Wax is a blend of high performance agents and carnauba wax. Easy to apply, long lasting and perfect for new and old moulds. Get more releases per applications, less wax build up and better moulding finishes.

REGULAR PASTE WAX TR104 HI TEMP 396G



TR-104 is a firm mould release wax based on high quality refined carnauba and petroleum distillates. Recommended for all fibreglass tooling, formica, metal and other hard surface moulds.

POLYVINYL ALCOHOL PVA

PVA (polyvinyl alcohol) is a water-based liquid plastic that can be applied to waxed moulds to prevent moulded parts from sticking. PVA is not always required. Often laminators rely solely on mould release wax to create a surface contaminant on the mould that allows parts to be removed. However, on complicated moulds and on new moulds, when the risk of a part sticking in a mould is greatest, PVA can be applied over a waxed mould. PVA can be applied by brush, paint roller or with spray equipment. PVA often leaves a texture on the surface of the mould after it dries. This texture is duplicated or moulded into the part produced in the mould. For parts that will be painted later, this texture is not an issue. However, for parts that rely on the mould surface to create a smooth final finish, the texture can be a problem. To achieve the smoothest and least textured PVA coating, apply it with spray equipment.

HONEY WAX 379G (14OZ)



Premium carnauba based paste mold release agent. Industry standard since 1985 that is extremely easy to wipe off. Honey Wax reduces man hours due to its exceptional ease of application and buffing.

MIRROR GLAZE NO.8 RELEASE WAX 311G



A blend of imported waxes, specially formulated to provide the maximum number of releases per application. Especially useful on tooling and new moulds.

Now manufactured as Stoner Miracle Gloss.

R5 SPRAY RELEASE WAX 400G



This is a wax based aerosol release agent, which is free of silicone and chlorohydrocarbons. When applied in a thin coating, the carrier easily and quickly evaporates, leaving a thin film of wax on the surface. The wax can take temperatures up to 100°C without melting and boiling. This release agent is commonly used to release all types of thermosetting resins from epoxy tooling and metal tooling. It is also used to seal absorbent surfaces and to aid release of the material to be cast into them. It is particularly effective for releasing polyurethane from epoxy tooling, and for releasing gelcoats from masters. R5 is effective in releasing any thermoset from flexible or rigid polyurethane moulds.

PVA RELEASE AGENT

The preferred application technique is to spray a couple of very fine mist coats a few minutes apart before applying a more generous wet coat over the entire mould. This technique minimizes the likelihood of getting "fisheyes" or imperfections in the coating and produces a very smooth PVA release coating.



500ml, 1L, 5L

R7 RELEASE AGENT 1KG



Silicone free wax based release agent. Quick drying solvent leaves film of wax suitable for releasing polyesters, epoxies and other resins

FARECLA PROFILE RANGE

The profile range has been meticulously formulated for polishing gelcoats, solid and painted surfaces including clear coats and laquers. Perfect for a spectrum of composite surfaces.

100 EXTRA HEAVY CUT COMPOUND 3KG

- Aggressive compounding paste
- Leaves a low gloss finish
- Removes P600 dry sanding marks

Farecla "liquid sandpaper", Profile 100 Extra is a coarse, water-based cutting compound designed for aggressive compounding on tough resins and gel coats. It removes P600 dry sanding marks from most substrates, leaving a relatively low gloss finish. Profile 100 Extra is often used in the first stage of a two-step polishing process when high gloss is required.



FINISH LIQUID COMPOUND 1L

Profile Finish is a very fine finishing compound designed to remove any light swirl marks and holograms from high quality painted lacquered and gel coat surfaces to leave the ultimate high gloss finish.

PREMIUM LIQUID COMPOUND 1L

Profile Premium Liquid Compound is a high performance, water-based cutting compound which removes P1200 or finer sanding marks from production gel coats and painted finishes, and is the perfect solution for restoring oxidised and weathered gel coat surfaces.

MOULD PREPARATION

FARECLA COMPOUNDS

FARECLA G3

Medium paste compound for use by hand or machine suitable for use with all paints and gelcoat. Removes gelcoat "chalking" and light scratches. Often used as a "one step system" to a great finish by hand or machine. For enhanced gloss, finish with G10 Finishing Compound.

400g, 3kg

FARECLA G3 ADVANCED LIQUID

Advanced G3 Liquid is a one-step system that provides a fast cutting action and a high gloss finish. It combines the reliability and other advantages of G3 Paste with a reduced clean up time when compounding by machine. It provides the user with improved versatility, quality and speed to final finish verses competitive products.

500ml, 1L

FARECLA G6

Aggressive cutting compound for use by hand or machine. Removes wet & dry marks and surface defects on well cured paintwork and Gelcoat.

4000g, 3kg

FARECLA G10 FINISHING COMPOUND

Ultra fine liquid compound is for use by hand or machine. G10 Finishing Compound is ideal for removing light scratches or swirl marks, especially on darker colours.

500ml, 1L



FOAM COMPOUNDING / POLISHING HEADS

Foam Compounding Head (Orange)

Synthetic compounding sponge. Complete with 14mm backing plate for direct fitting - hard

Foam Polishing Head (White)

Synthetic soft polishing sponge. Complete with 14mm backing plate for direct fitting. Allows pad change in one quick easy motion. Perfect centering every time. 14mm thread to fit most polishers

Foam Polishing Head (Red)

Silverline 150mm Foam - super soft
14mm backing plate for direct fitting

Foam Compounding Head (Green)

Synthetic compounding sponge. Complete with 14mm backing plate for direct fitting.



WOOL COMPOUNDING HEAD



Farecla Advance 6" Lamswool Pad
Pure lambswool 150mm head.
Requires G Mop back plate (sold separately).

FARECLA G-MOP BACK PLATE

FARECLA COMPOUNDING FOAM

FARECLA POLISHING FOAM



Features hook and loop system for easy interchange between applicators. 14mm thread is moulded in crack resistant plastic.



Farecla Advanced 6" Compounding Foam
Features up to 30% more cutting action. Developed specifically for use with water. Multi layered foam with a recessed black plate. For use with G3 and G6 paste, G3 Advanced Liquid, G10 Liquid and the Profile range. Requires G-Mop back plate (sold separately).



Farecla Advance 6" Polishing Foam - 2 pack
Suitable for use on most paint systems, gelcoats and other composite materials. Multi layer foam provides greater durability. For use with G10 extra fine and Profile Glaze. Requires G-Mop back plate (sold separately).

MOULD PREPARATION

FARECLA SCREWFIT ADAPTOR 14MM



Aluminium adaptor to fit screwfit wool heads.
Common 14mm thread to fit most polishing machines.

FARECLA COMPOUNDING PAD 8"



- Double sided
 - High quality dense weave
 - Fully washable
 - Requires screwfit adaptor
- High quality wool head for machine compounding of composites, gelcoats and paints.

DRAWSTRING POLISHING BONNET 180MM



100% lambswool polishing bonnet with drawstring. Ideal for final buffing and polishing. Use with backing pad and sander/polisher.

PRODUCTION SANDPAPER ROLLS 10m



- Fully resin bonded
- Flexible backing paper
- Long life aluminium oxide abrasive
- Open coat reduces clogging

40 grit, 80 grit, 180 grit

PRODUCTION SANDPAPER ROLLS 50m



- Durable latex backing paper
- Crease & tear resistant
- Excellent clog resistance - Longer working life
- High performance aluminium oxide abrasive grain

40 grit, 80 grit, 120 grit

PRODUCTION PAPER SHEETS



Aluminium oxide dry production sandpaper.
40-120 grit.
Lower numbers are coarsest.

WET & DRY PAPER SHEETS

For smoothing prior to using polishing compounds.
240-1200 grit. Higher number for finer finish.

SUPERFINE WET & DRY PAPER SHEETS



Available in micro finishing grits P1500 & P2000

125mm ABRASIVE DISCS

Top quality longer life discs. Nylon grip backing for hook & loop pads. Anti clogging lubricant layer.
40-400 grit.

150mm ABRASIVE DISCS

Top quality longer life discs. Nylon grip backing for hook & loop pads. Anti clogging lubricant layer.
40-400 grit.

125mm REDLINE ABRASIVE DISCS



Nylon grip backing for hook & loop pads.
Excellent clog resistance.
Optimised for dry sanding applications.
Fine finishing grits - 600, 800, 1000 & 1200.

150mm REDLINE ABRASIVE DISCS



Nylon grip backing for hook & loop pads.
Excellent clog resistance.
Optimised for dry sanding applications.
Fine finishing grits - 600, 800, 1000 & 1200.

MOULD PREPARATION

180mm SANDING DISC 10 PACK



10 pack - Nylon grip backing for hook & loop pads.
Available in 120 and 240 grit.

90mm TRIANGLE SANDING SHEETS



10 pack - Aluminium Oxide. Hook & loop fitting.
Suitable for all 90mm Detail Sanders.

60 grit, 120 grit, 240 grit

140mm GRIT TRIANGLE SHEETS



10 pack - Aluminium Oxide. Hook & loop fitting
Suitable for all 140mm Detail Sanders. Assorted sheet
pack contains: 4x60, 2x80, 2x120 & 2x240 grit

GRINDER BACKING PAD & CLAMP



Flexible pad for 115mm fibre discs. Includes threaded
metal clamp. Fits all grinders with 14mm thread.

15 HOLE SOFTFORM ADAPTOR PAD 150mm



10mm thick hook & loop faced soft interface pad to
fit 150mm disc orbital sanders.

115mm GRINDER SANDING DISCS



P36 Sanding Disc - 115mm Diameter. 23mm Centre
hole. Heavy duty resin bonded. Flexible fibre backing.

P80 Sanding Disc - 115mm Diameter. 23mm Centre
hole. Heavy duty resin bonded. Flexible fibre backing.

115mm ALUMINIUM FLAP DISCS

SILVERLINE



115mm diameter. 23mm centre hole. No backing
plate required. Outlasts resin discs by up to 28 times.

40 grit, 60 grit.

SANDING BELTS 5 PACK

Sanding Belts 5 Pack 533mm
x 75mm

- Aluminium oxide
- Fully resin bonded
- Fits all 533 x 75mm belt sanders

40 grit, 60 grit, 80 grit 120 grit



POWER FILE SANDING BELTS 5 PACK

Power-File Sanding Belts 5 Pack
13mm x 457mm

- Aluminium oxide
- Fully resin bonded
- Fits all 457 x 13mm powerfile
sanders

40 grit, 60 grit, 80 grit 120 grit



SANDING SPONGES



These aluminium oxide, fine grit sanding sponges
are perfect for a wide range of substrates, including
jel-coats, paints, clear coats, wood and more. Perfect
your fine sanding regardless of the application - the
Rhynosponge produces a conformable surface for
sanding edges and curved panels.

MOULD PREPARATION

BLUE TISSUE ROLL



- Contains cardboard tube
- 150 metres long
- Dimensions: 190mm x 190mm

POLISHING WIPES

Polishing wipes that are made from a soft white apertured polyester-viscose blend.

These top quality, super absorbant wipes, are intended for applying and removing polishes, cutting com-pounds and waxes by hand but are also effective at applying valeting products to leather and plas-tic, cleaning glass and all other cleaning tasks.

Great value for money - 400 sheets (160m total length) from a centre feed roll.

- **Very strong and low linting**
- **Compatible with almost all industrial pastes**
- **Fabric design absorbs solids**
- **No static**
- **Extremely soft**



SOFT SANDING BLOCK



- Ergonomic foam block for curved surfaces
- For use with 150mm hook & loop discs
- Includes 3 discs 40, 120 & 240 grit

TACK RAGS



A general purpose tack rag for removal of dust on GRP moulds prior to gelcoating and any surface prior to painting. Box of 10 tack rags. 23cm x 25cm each.

STOCKINETTE



Stockinette, polishing cloth roll. 2ft x 24ft (800g) roll

RUBBING BLOCK



- Heavy duty rubber block
- Spikes lock paper in place
- For use with any sandpaper cut to size

AZ POLISHING CLOTH



Low linting soft polisher offcuts.

RESIN PROOF TAPE



Clear, resin proof, adhesive tape. Self releasing so resins, gelcoats and epoxies wont stick. Rolls are 66 mts long.

25mm, 50 mm

Conversion Charts

1 inch = 25 millimetres

1 foot = 0.305 metres

1 yard = 0.914 metres

1 square inch = 6.4516 square centimetres

1 square foot = 0.093 square metres

1 square yard = 0.836 square metres

1 cubic inch = 16.387064 cubic centimetres

1 cubic foot = 0.028 cubic metres

1 cubic yard = 0.765 cubic metres

1 cubic inch = 0.0163871 litre

1 pint = 0.568 litres

1 UK Gallon = 4.546 litres

1 US Gallon = 3.79 litres

1 ounce = 28.35 grams

1 pound = 0.454 kilos

1 ton = 1000 kilos

Material Spread Rates

(Note: CSM = Chopped Strand Mat)

RESIN

Priming Plywood Resin = 500g per m².

Laminating, for each kilo of 300g CSM use 2.5kg of resin.

Laminating, for each kilo of 450g CSM use 2.5kg of resin.

Laminating, for each kilo of 600g CSM use 2.5kg of resin.

GELCOAT

Gelcoating on mould surface 550g per m².

Topcoating after laminating 600g per m².

PIGMENT PASTES – Turn to page 9

CATALYST – Turn to page 13

WAX SOLUTION

Add 2% by weight to Gelcoat, to make "Topcoat" 20g per kg

STYRENE

Add 10% by weight for thinning resin. 100g per kg resin.

2 PART PU FOAM

Expands up to 25 times its original volume. 1kg per cu ft.

PVA RELEASE AGENT

On non porous surface 200g per m².

G4 SEALER

Sealing porous surfaces without fibreglass sheathing, 1 coat = 150ml per m²

Sealing porous surfaces with fibreglass sheathing, 1 coat = 100ml per m²

CARBORUNDUM GRIT

Sprinkled onto wet topcoat 1.6kg per m².

PRYMAX

Prymax is a moisture cured polyurethane sealer that is hard but flexible enough to form a super tough waterproof coating.



LLEWELLYN RYLAND POLYESTER SURFACING PRIMERS



Llewellyn Ryland Polyester Surfacing Primers

Llewellyn Ryland have developed a top quality range of plug and pattern primers able to mould directly from (after release agent). Choose higher numbers for higher coat build-up, lower numbers for higher gloss finishes when buffed. Best results achieved when sprayed using 1.8 - 2mm nozzle. All packs include required catalyst. Pot life: 15-19 mins at 25°C

PLQ04 Polyester Easy Sand Surface Primer Grey 5ltr

Easy sanding primer with medium build and medium gloss finish.

Pack includes 100g MEKP Catalyst

PLQ05 Polyester Base Primer Cream 5ltr

High build base primer.

Pack includes 100g MEKP Catalyst

15 YEAR WHITE

15 year white is a one component, high gloss, white coating for metal, wood, aluminium and GRP. Formulated from premium moisture cured polyurethane with light fast pigments, 15 year white has exceptional stability against U.V. light with outstanding non-yellowing and non-chalking qualities. The coating has a combination of hardness, flexibility and toughness, abrasion resistance and resistance to most chemicals. 15 Year White can be applied at a wide range of temperatures (down to 0°C) and in humid conditions. Non-yellowing, non-chalking, moisture-cured, tough but flexible.



PAINTS, COATINGS & PRIMERS

PRYMAX WOOD HARDENER



Prymax Wood Hardener is moisture curing polyurethane designed to penetrate deeply into and harden rotten or decayed wood. Can be used for interior and exterior applications and can be applied in damp conditions. Apply straight from the tin, does not require mixing with a hardener.

PRYMAX POND SEAL COLOURED



Prymax is an easy to apply liquid polyurethane that forms a hard but flexible plastic seal on almost any porous surface. Treat your rendered pond to a coat of armour; sealing out moisture and lime, consolidating fragile surfaces and leaving a tough, hardwearing glosscoat. For a full pond coating system use 2 coats of Prymax clear and 2 coats of Prymax coloured.

Coverage: 4 coat colour system

1st and 2nd coat Clear Prymax = 400g per m² (for both coats)
3rd and 4th coats Coloured Prymax = 400g per m² (for both coats)
Available in Clear, Green, Black or Grey

PRYMAX MARINE CLEAR SEAL

- Clear & UV stable
- Seals wood, metal, brick & concrete
- Tough, high gloss finish
- Exterior & Interior

A high performance, crystal clear, high gloss polyurethane coating for wood, metal, brick and concrete. Extremely tough and flexible and resistant to UV, solvents oil and fuel.

Coverage approx 150ml per m² per coat. (Not suitable for application over paint or gelcoats)



PRYMAX THINNERS



Prymax thinners is used to thin Prymax Damp Seal and Prymax Pond Seal (NOT Prymax GRP Primer)

AUTOMOTIVE PAINTS AND PRIMERS

INDASA HIGH BUILD PRIMER GREY

Indasa High Build Primer Grey 500ml

One pack high build primer. Excellent adhesion. Compatible with infra red. Non clog nozzle.

INDASA ACRYLIC BLACK PAINT

Acrylic Black Paint Aerosol 500ml.

- One pack ready to use
- Hard durable finish
- Choose from Gloss, Satin or Matt
- Non clog nozzle

The very latest aerosol coatings technology is utilised for these high solid acrylic topcoats.

INDASA ETCH PRIMER GREY AEROSOL

Etch Primer Grey 400ml Aerosol

Acid etching primer for metal and GRP. Excellent adhesion properties, fast drying with anti-clog nozzle.





International Paints, Varnishes & Antifouling

The leading supplier of boat paint maintenance solutions to help protect, beautify and improve your boat's performance



INTERNATIONAL WOODSKIN



Woodskin is a flexible wood oil/varnish hybrid that acts like a skin for your wood. Microporous properties allow Woodskin to breathe with your wood; tiny holes let the paint film expand and contract but are small enough to repel water.

Woodskin is very easy to apply; no need to thin or sand between coats. With good flow and levelling, Woodskin dries to a subtle, translucent sheen.

Woodskin penetrates deep into your wood, leaving a thin surface film that will not crack or flake. Minimal maintenance requirements - simply clean and reapply season after season - the Natural Teak colour of Woodskin will showcase the beauty of any wood. Woodskin is suitable for use on all types of wood, including oily woods such as teak and iroko.

INTERNATIONAL COMPASS



A fast drying, highly durable one-part polyurethane gloss varnish. Achieve a professional, long-lasting finish that will deliver maximum resistance to abrasion, chemical water and alcohol spills. Compass is light amber in colour, to emphasise the colour of natural wood. Compass is suitable for all internal and external woods, and can be applied directly to oily timbers, such as teak and iroko

INTERNATIONAL SCHOONER GOLD

Schooner Gold has been formulated using an optimised blend of premium UV absorbers, HALS and resins to ensure the products exceptional deep gloss and colour are retained over the lifetime of the coating. Developed as a high gloss yacht varnish with a traditional amber hue, tests show that the gloss retention of Schooner Gold outperforms other leading varnish products. Achieve a professional finish in 4-6 coats, sanding only between every other coat, reducing work time. Formulated for use without the need for thinning, Schooner Gold is suitable for all internal and external woods, and can be applied directly to oily timber, such as Teak and Iroko. For thinning use Thinner 1. Coverage 10.5 m²/750ml.



INTERNATIONAL ORIGINAL VARNISH

A conventional general purpose yacht varnish with good gloss retention, UV filters and excellent non-blooming qualities. Easy to apply over any type of existing varnish and easy to recoat. It is suitable for interior and exterior use, whatever the construction. For thinning use Thinner 1. Coverage 8.8m²/750ml



INTERNATIONAL TEAK OIL

A traditional Scandinavian formula for ultimate long lasting protection against the elements and to enhance the beauty of teak. Also contains a rust inhibitor to protect metal fixings. Suitable for use on dry or damp wood and safe for use around fibreglass, metal and painted surfaces.



INTERNATIONAL PERFECTION



Perfection 2-part polyurethane is the ultimate performing, high gloss topside finish. It provides the longest-lasting, ultra-high gloss finish that has superb colour retention, together with excellent chemical and abrasion resistance. It has been formulated specifically to enable

skilled amateur users to achieve professional quality results with ease. UV filters combined with the chemical cure of the polyurethane give the longest life possible.

For more details on the colours available, download the complete international colour charts from our website.

INTERNATIONAL TOPLAC PLUS



Toplac is a premium gloss marine enamel for all substrates above

the waterline. It is exceptionally easy to apply by brush or roller and pad and contains UV filter for increased durability. Its unique chemical structure enables Toplac to out perform traditional finishes giving a long lasting high definition gloss. 750ml.

For more details on the colours available, download the complete international colour charts from our website.

INTERNATIONAL SUPER GLOSS HS



Super Gloss HS is a low VOC high gloss yacht finish that has been optimised for roller application.

Very easy to apply, even at lower temperatures; this high solids formulation has a reduced odour and delivers full opacity in just 1-2 coats.

Super Gloss HS can be applied by roller without tipping-off, minimising the effort needed to achieve a high-gloss topside finish with great durability.

INTERNATIONAL INTERDECK 750ml



- Slip resistant polyurethane deck paint
- Hard wearing, non-slip surface
- Suitable for all substrates
- Low sheen finish prevents sunlight dazzle
- Apply straight from the can with brush or roller

DANBOLINE



International Danboline 750ml

- Coating for bilges, lockers and bulkheads
- Chemical resistance to fumes, fuel and oil
- High opacity for thorough coverage
- Cleans easily for reduced maintenance

INTERNATIONAL MATTING ADDITIVE



Matting additives can be added to both International finishes and varnishes; and depending on the mix ratio between the product and the additive, a variety of gloss, satin or matt effects can be achieved. Suitable for use with one-part products only. 750ml.

INTERNATIONAL ONE UP 750ml



- Replaces Yacht Primer and Pre-Kote
- Best in class system with one-pack finishes
- Easy to apply by brush and roller

One UP is a single pack primer/undercoat for use above the waterline with International one-pack finishes and deck paints. Simple yet effective, making painting easier for DIY customers without compromising on aesthetic appearance or substrate protection. Coverage 9m² / 750ml

Available in White and Blue-Grey.

PERFECTION UNDERCOAT 750ml



A high performance, extremely tough, long lasting 2-pack undercoat for use under Perfection gloss.

May only be applied over existing 2-pack finishes or bare GRP.

Colour: white.

Coverage 9m² / 750ml.

WATERTITE EPOXY FILLER



A quick drying epoxy filler ideal for long lasting repair onto suitably primed substrates.

Its key benefit is a fast curing time, excellent for filling small areas and ideal for the DIY yachtsman.

This smooth 2-pack formulation has a matt blue finish and can be used on areas above or below the waterline to fill holes up to 2cm depth per application.

Excellent resistance to water penetration.

MARINE PAINTS & BOATCARE

INTERNATIONAL THINNERS NO.1



General purpose thinner and equipment cleaner for 1-pack paints and varnishes including, Yacht Primer, Toplac, Pre-Kote, Interdeck, Danboline, Schooner

INTERNATIONAL THINNERS NO.3



Thinner and equipment cleaner for Interpeed, Micron, Cruiser Uno and Trilux.

INTERNATIONAL THINNERS NO.7



Thinner and equipment cleaner for epoxy type International paint products.

INTERNATIONAL THINNERS NO.9



Thinner and equipment cleaner for 2-pack polyurethane type International paint products including Perfection Varnish, Perfection, Perfection Undercoat

INTERNATIONAL THINNERS NO.910



Special purpose thinners for spray application of Perfection Paint and Perfection Undercoat.

INTERNATIONAL INTERPROTECT

Interprotect is a quick drying, easy to apply two-pack epoxy primer for high performance protection on all rigid substrates. It's two-component application gives excellent anti-corrosive and abrasion resistance properties and it can be used equally above or below the waterline.



Not suitable for use below 5°C.

- Excellent anticorrosive protection
- Antifouling tie-coat for use over epoxy primers
- Good abrasion resistance

INTERNATIONAL PRIMOCON PRIMER

Quick drying general purpose below the waterline primer for International antifouling. Ideal for priming bare hulls and as a barrier coat between unknown or incompatible antifouling. Suitable for GRP, wood, steel and aluminium.



Colour Grey.

Coverage 5.6m² / 750ml.

TRILUX PROP-O-DREV

500ml Aerosol

A low friction antifouling with Teflon. It is ideal for use on outdrives, propellers, trim tabs etc, where the aerosol container ensures easy application of the antifouling to awkward areas. It is suitable for use on aluminium.

- Aerosol application for difficult to reach areas
- For propellers, outboards & sterngear
- Can be used on aluminium & stainless
- Contains Biolux technology



TRILUX ANTIFOULING 375ML



Reformulated to give improved protection and a brighter white, Trilux 33 is a high performance brightly coloured antifouling. Formulated with Biolux technology, the slow polishing formula helps avoid paint build up and gives effective fouling protection for up to 18 months. Suitable for all types of construction, including aluminium, Trilux 33 now has a lower VOC content that helps reduce environmental solvent emissions. Colour: Red/Blue

MARINE PAINTS & BOATCARE

EPIFANES PU GLOSS PAINT 750ML



- Perfect flow
- Easy application
- Excellent outdoor durability and weather resistance

A high gloss two-component yacht paint with excellent outdoor durability and weather resistance. Scratch resistant and very long gloss retention. Provides a perfect flow and easy application by brush and roller.

GPR - Steel - Wood - Aluminium: Suited for topcoating two-component primer systems above the waterline. Also suited for epoxy resin treated surfaces. Can be applied directly on thoroughly degreased and sanded fibreglass. Intermediate coat on epoxy resins or epoxy paints prior to the application of traditional one-component paints.

Available colours:

Bold Blue
Cream
Dark Blue
Grey Mist
Red
White

EPIFANES CLEAR VARNISH 500ML



A clear, traditional yacht varnish with extreme high gloss, unique flow characteristics and high build capacity. The UV filter prevents the wood against discolouration. Its flexibility prevents cracking on working wood. This varnish is famous for its high gloss retention, long lasting properties, even in tropical climates.

EPIFANES WOOD FINISH GLOSS VARNISH



A clear, high gloss varnish-like finish especially suited on oily, resinous tropical types of wood and American pine. As alternative for the continuous maintenance of impregnating woodoil systems. Excellent adhesion to well degreased and sanded teak, iroco and other (oily and resinous) types of wood. If a maximum of 5 coats are applied, this oil varnish still allows the wood to breathe. Further build-up will close the wood.

EPIFANES 2 PART PU GLOSS VARNISH



A high gloss, two-component, polyester saturated, aliphatic urethane finish with excellent outdoor durability. Resistant to weathering, chemicals, scratching and loss of gloss. Outstanding flow characteristics for both brush and spray applications. The UV-filter protects the wood from discolouration.

Suited as an indoor and outdoor varnish system on its own on non-working (ply-)wood, as UV-resistant and protective finishing coat on epoxy resin or as an intermediate adhesion coat on wood treated with epoxy resin prior to the application of Epifanes one-component varnishes.

EPIFANES BRUSH THINNERS 1L



A high quality thinner for brushing or rolling most one-component primers, paints and varnishes.

High solvng power providing easy thinning. The double distillation of this thinner provides maximum purity.

EPIFANES SPRAY THINNERS 1L



Thinner for spray applications of one component primers, paints and varnishes. Also highly suited for degreasing wood and existing paint and varnish layers.

EPIFANES PU BRUSH THINNERS 1L



A slow evaporating thinner for brushing and rolling Epifanes Poly-urethane yacht coatings. Also suited as slow evaporating thinner for Epifanes PP Varnish Extra.

EPIFANES PU SPRAY THINNERS 1L



A fast evaporating thinner for spraying Epifanes Poly-urethane yacht coatings.

MARINE PAINTS & BOATCARE

SEAJET 037 COASTAL 2.5L



A hard, conventional antifouling paint suitable for all types of pleasure craft. Suitable for drying moorings, good performance in inland waters.

Pack Size: 2.5 litre.
Coverage rate: 9.8m² per litre.

SEAJET 033 SHOGUN SELF-POLISH



Seajet 033 Shogun is a prize-winning, self-polishing antifouling suitable for all types of pleasure craft.

- High performance - Award winning
- Tin Free
- For speeds up to 40 knots

Pack Size: 2.5 litre.

SEAJET 034 EMPEROR 2.5L



Recommended for very high fouling areas for all boat types of speeds up to 40 knots. New, advanced biocide package. Great performance against slime. Ideal for racers. Lasting up to two seasons. Copper free and no risk of galvanic corrosion on aluminium surfaces or propellers.

SEAJET 031 SAMURAI 2.5L



Seajet 031 Samurai is a new 'budget conscious' self-polishing anti-foul for yachts and boats. Available in a choice of four colours, black, shark-grey, red and navy-blue, Samurai is copper based yet formulated with slightly less booster biocide than some of Seajet's other anti-foul products and will provide good all round hull protection in either salt or fresh water environments.

SEAJET THINNER A



Add to Seajet Antifouling paint for easier application and cleaning brushes and tools

SEAJET 015 PRIMER



Binder coat for old antifouling. Primer for antifouling. Quick drying. Excellent sealer/barrier coat over unknown, incompatible and teflon based antifouling

3M PERFECT-IT III FINE COMPOUND

3M Perfect-It III Fine Compound is a quick action, fine cutting compound ideally suited for the removal of light oxidation, overspray and minor scratches on gelcoats and two pack paint systems.



3M PERFECT-IT III FAST COMPOUND

3M Perfect-It III Fast Cut Compound is a fast acting, coarse grade compound for the rapid removal of fine sanding scratches. Offering fast and effective action, this product is the ultimate tool when it comes to removing unsightly scratches and oxidation from all marine paints and gelcoat surfaces

- Fast, effective action
- Achieves a fine, high gloss finish
- Use on gelcoat, paint & metal



3M MARINE COMPOUND & FINISHING

Designed for use on gel coats, 3M Marine Imperia Compound & Finishing Material is a one-step boat polish with a fast cut that leaves a premium, high gloss finish without swirl marks. It is easy to apply - by hand or using a mechanical buffer - and easy to clean up.

- One step boat polish
- Removes scratches, oxidation, stains & swirls
- Easy to apply, easy to clean up
- Fast cut leaves a high gloss



MARINE PAINTS & BOATCARE

3M MARINE FINESSE-IT II

Designed for use on topside paint and gel coats, 3M Finesse-It II Finishing Material is a high quality boat polish that removes scratches, light to medium oxidation and haze or swirl marks that are left as a result of compounding. Use it as a final finishing step after 3M Marine Compounds to achieve a smooth, high gloss, wet look finish.



- Boat polish for use on topside paint and gel coat

3M 36112E PERFECT-IT BOAT WAX 473ML

3M Perfect-It Boat Wax is the final, brilliant step in achieving a truly professional marine finish. Its blend of pure Brazilian carnauba wax, silicones, polymers and resins brings out an extraordinary gloss and provides durability against the elements. The liquid wax formula is easy to apply and performs even on warm surfaces, and is safe for gelcoat, paint, fiberglass and metal.



3M PERFECT-IT GELCOAT WAX 946ML



Works great on boats, caravans and industrial gelcoats. Combines light cutting power with a glossy finish and durable wax. Stays wet longer, giving material savings and easier clean up.

INTERNATIONAL WATERTITE EPOXY FILLER

A quick drying epoxy filler ideal for long lasting repair onto suitably primed substrates. Its key benefit is a fast curing time, excellent for filling small areas and ideal for the DIY yachtsman.



This smooth, 2-pack formulation has a matt blue finish and can be used on areas above or below the waterline to fill holes up to 2cm depth per application. Excellent resistance to water penetration.

TEROSON GELCOAT FILLER 241G



White filler for repairing chips and scratches in gelcoat. Can be polished to a gloss. Kit contains filler, hardener paste, spreader and full instructions.

TEROSON UP 610 MARINE FILLER 341G



A white polyester universal filler for marine application. TEROSON UP610 can be used on glassfibre, metal and wood (but not suitable for use below waterline on wood).



SOLVENTS & CLEANERS

ACETONE



The most popular and effective solvent brush cleaner for removing uncured resin from tools. Not for cleaning unprotected hands. It should be kept in covered containers as it evaporates quickly and is highly flammable.

PRYMAX CLEANER



General purpose thinner for use with a wide range of cellulose base coats and laquers. Use for paint thinning and cleaning tools and equipment. Also excellent for removing wax build-up on GRP moulds.

CELLULOSE THINNERS



General purpose thinner for use with a wide range of cellulose base coats and laquers. Use for paint thinning and cleaning tools and equipment. Also excellent for removing wax build-up on GRP moulds.

ISOPROPYL ALCOHOL



Isopropanol 99% pure, used widely as a solvent and as a cleaning fluid. Cleans electronic devices such as contact pins, magnetic tape and disk heads such as those in audio and video tape recorders and lenses of lasers in optical disc drives.

Isopropyl alcohol removes smudges, dirt, and fingerprints from cell phones and PDAs. It is effective at removing residual glue from some sticky labels, glass cleaning and much more.

METHYLATED SPIRIT



WHITE SPIRIT



OXALIC ACID



The boat owners favourite! Mix 1 part oxalic acid with approximately 6-10 parts water, makes a highly effective cleaner for removal of stains and rust from gelcoat, stainless steel and wood.

RESIN PROOF TAPES



Clear, resin-proof, adhesive tape. Self-releasing so resins, gelcoats and epoxies wont stick. Rolls are 66 metres long, 25mm or 50mm wide.

DUCT TAPE



Gaffers Tape 50mm Silver
Heavy duty adhesive tape

For up to date pricing information, please visit our website.

www.cfsnet.co.uk

GORILLA TAPE HANDY ROLL



- Tough all-weather shell
- Reinforced Backing
- Double thick adhesive

25mm width.

GORILLA TAPE 32M ROLL



- Tough all-weather shell
- Reinforced Backing
- Double thick adhesive

GORILLA CLEAR REPAIR TAPE

No other tape offers the clarity, strength and durability of Gorilla Clear Repair! The ideal solution for almost any repair, Gorilla Clear Repair features the strength of Gorilla Tape in a weatherproof, airtight, crystal clear tape. Fix, patch, seal, hold, and protect almost any surface with a crystal clear appearance for a perfect fix every time Gorilla Clear Repair Tape 48mm x 8.2m. Weather resistant, sticks to smooth, rough and uneven surfaces. Crystal clear, tear by hand.



3M 3434 MASKING TAPE 50M ROLL



Masking tape for marine applications, good water and solvent resistant properties. Excellent instant adhesion.

25mm or 50mm wide.

INDASA MTE MASKING TAPE



Temperature rating 80°C. Flexible, conformable and easy to tear. Easy to apply and remove – no adhesion transfer.

24mm or 48mm wide.

FINE LINE TAPE 12MM



- Repositional tape
- Ideal for indoor and outdoor use
- Can be used on delicate surfaces
- Gives a perfect straight line

ADHESIVES AND TAPES

GORILLA GLUE

The product that changed the retail adhesive landscape - and built a devoted following - is creating even stronger bonds with professionals and DIY-ers.



- Versatility - Ideal for household fixes indoors or out
- Bonds just about anything - Sticks wood, metal, ceramics, foam, stone, glass & more!
- 100% Waterproof - Will not breakdown when exposed to moisture
- Temperature Resistant - Unaffected by hot or cold
- Paintable, Stainable, Sandable
- More Coverage - Foams to 3x it's size!

115ml, 250ml

GORILLA WOOD GLUE

New Gorilla Wood Glue, bonds stronger, faster for wood to wood applications. Its hard working and long lasting. Your wood glue just got a lot tougher! What's more, its special formula was created for a variety of wood surfaces, is water resistant and has no dyes for a better looking bond.



- Gorilla strength delivered again!
- Requires only 20-30mins of clamp time & fully cured in 24 hours
- Good for hardwood, softwood and composites.
- Easy to use nozzle

236ml, 532ml

GORILLA 5 MINUTE EPOXY

Gorilla Epoxy provides a strong, permanent, fast and gap-filling bond that's great for multiple surface applications. The easy-to-use, reusable syringe dispenses equal amounts of resin and hardener for easy, even dispensing.



- Bonds: Metal, Wood, Ceramics, Glass, Most Plastics & More!
- Sets crystal clear
- Resealable syringe
- Low odour
- Solvent & water resistant

GORILLA SUPER GLUE



- Impact Strength - From unique rubber particles.
- Bonds just about anything - Sticks wood, metal, ceramics, foam, stone, glass & more!
- Reduced Clogging - Anti-clog tip with metal pin keeps nozzle clean.
- Easy to use - Thicker formula, dries in just 30 seconds

GORILLA GLUE CLEAR

Tough, Crystal Clear, Sticks to Everything Glue. The strength and versatility you have come to expect from Gorilla Glue is now available in an easy to use, crystal clear, non-foaming formula. Clear Gorilla Glue is incredibly strong and is ideal for indoor and outdoor applications and bonds virtually everything.

Clear Gorilla Glue offers an extended working time, which allows you to reposition your project. It is also gap filling which allows you to glue uneven surfaces. Clear Gorilla Glue is water resistant, and can withstand intermittent exposures, however is not meant for a constant soak. Original or White Gorilla Glue are 100% waterproof and can withstand soaking and longer term water exposure, assuming the materials being are not significantly affected by the water.

- Crystal Clear
- Non-expanding
- Seamless glue lines
- Gorilla Tough



GORILLA GRAB ADHESIVE



Gorilla Heavy Duty Grab Adhesive is the all purpose way to bond building materials. It's so versatile, it grabs virtually anything instantly. Use it indoors or out, even underwater, for an extra tough bond that will last.

SIKAFLEX 291

Resistant to weathering, seawater and ultra-violet radiation, Sikaflex 291 is the perfect all-rounder: an all purpose flexible marine sealant that bonds extremely well to all the standard materials used in boat construction. Its outstanding elasticity ensures a durable, long lasting seal. 310ml Cartridge. Colours available: White or Black



Also available: caulking gun

INDASA PU ADHESIVE/SEALANT



A new flexible PU adhesive ideal for bonding roof trims and other GRP, wood and metal. 310ml Cartridge. Available in Black, White and Grey

SODAL CONTACT ADHESIVE 140 LQ



A universal, toluene free, solvented, ready to use contact adhesive based upon rubber and synthetic resins. Bonds many materials such as rubber, leather, cork, plastic, felt, etc. on various types of substrates or among themselves.

750g

SODAL 5 MIN D4 PU WOOD ADHESIVE



High strength and ultra fast curing, PU liquid timber adhesive. Excellent water resistance: D4 (DIN EN 204). Easy application. Foaming action to fill uneven surfaces. Can be used on damp/humid wooden surfaces. 5 minute open time.

750g

RESIN CARTRIDGE APPLICATOR GUN



Heavy-duty gun with strong steel skeleton frame with quick-release trigger for instant pressure release. For polyester resin fixing systems.

JCP POLYESTER INJECTION RESIN

Polyester Resin is a two part grey resin (10:1) suitable for use in the vast majority of base materials. It can be used for installing threaded studs, rebar or internal threaded sockets for structural applications. For use in a wide variety of substrates including Concrete C20/25 to C50/60, Non-Cracked Concrete, Dry/Wet/ Flooded Holes, Solid Brickwork, Concrete Block, Hollow Base Materials, Natural Stone and more.



JCP POLYESTER SF INJECTION RESIN

- Fast Cure Resin
- Winter Grade
- Expansion Free
- High Performance

Polyester Styrene Free Resin is a two part grey resin (10:1) suitable for use in the vast majority of base materials. It can be used for installing threaded studs, rebar or internal threaded sockets for structural applications. For use in a wide variety of substrates including Concrete C20/25 to C50/60, Non-Cracked Concrete, Dry/Wet/Flooded Holes, Solid Brickwork, Concrete Block, Hollow Base Materials, Natural Stone and more.



JCP HIGH LOAD VINYLESTER INJECTION

High Load Vinylester Resin is an extra tough two part grey resin (10:1) suitable for use in the vast majority of base materials. It can be used for installing threaded studs, rebar or internal threaded sockets for structural applications. For use in a wide variety of substrates including Concrete C20/25 to C50/60, Non-Cracked Concrete, Dry/Wet/ Flooded Holes, Solid Brickwork, Concrete Block, Hollow Base Materials, Natural Stone and more.



JCP VINYLESTER WINTER GRADE RESIN

- Fast Cure Resin
- Winter Grade
- Expansion Free
- High Performance

Vinylester Resin is a 2-part grey resin (10:1) suitable for use in temperatures down to -10°C or as a fast cure resin in warmer temperatures. It can be used for installing threaded studs, rebar or internal threaded sockets for structural applications. For use in a wide variety of substrates including Concrete C20/25 to C50/60, Non-Cracked Concrete, Dry/Wet/Flooded Holes, Solid Brickwork, Concrete Block, Hollow Base Materials, Natural Stone and more.



JCP PURE EPOXY INJECTION RESIN

Pure Epoxy Resin is a two part red resin (3:1) suitable for use in the vast majority of base materials. It can be used for installing threaded studs, rebar or internal threaded sockets for structural applications. For use in a wide variety of substrates including Concrete C20/25 to C50/60, Non-Cracked Concrete, Dry/Wet/ Flooded Holes, Solid Brickwork, Concrete Block, Hollow Base Materials, Natural Stone and more.



JCP EPOXY ACRYLATE + MIXER NOZZLE

- Expansion Free
- High Performance
- Close Spacing And Edge Distance

Epoxy Acrylate Resin is a two part grey resin (10:1) suitable for use in the vast majority of base materials. It can be used for installing threaded studs, rebar or internal threaded sockets for structural applications. For use in a wide variety of substrates including Concrete C20/25 to C50/60, Non-Cracked Concrete, Dry/Wet/Flooded Holes, Solid Brickwork, Concrete Block, Hollow Base Materials, Natural Stone and more.



POND LINING & COATING

Fibreglass Pond Material Packs

These basic material packs have been created to make purchasing a GRP lining kit easy. They contain all primers, fibreglass mats, resins, topcoats and hardeners. Racing green and black colours are listed here, but other colours are available by calling our sales team for a quotation.

PP1 POND MATERIAL PACK



PP1 Pond Material Pack 8m²

For ponds up to 8m². All kits include hardeners.
Kit Contents: 25kg Resin, 10kg 450g Chopped Strand Mat, 10m Surface Tissue, 5.5kg Selected Colour Topcoat, 2 litre G4 Primer.

PP2 POND MATERIAL PACK



PP2 Pond Material Pack 15m²

For ponds up to 15m². All kits include hardeners.
Kit Contents: 50kg Resin, 15kg 450g Chopped Strand Mat, 20m Surface Tissue, 11kg Selected Colour Topcoat, 2.5 litre G4 Primer.

PP3 POND MATERIAL PACK



PP3 Pond Material Pack 24m²

For ponds up to 24m². All kits include hardeners.
Kit Contents: 60kg Resin, 25kg 450g Chopped Strand Mat, 30m Surface Tissue, 22kg Selected Colour Topcoat, 5 litre G4 Primer.

PP4 POND MATERIAL PACK



PP4 Pond Material Pack 50m²

For ponds up to 50m². All kits include hardeners.
Kit Contents: 125kg Resin, 47kg 450g Chopped Strand Mat, 60m Surface Tissue, 33kg Selected Colour Topcoat, 10 litre G4 Primer.

FIBREGLASS POND LINING TOOL PACKS



TP5 Tool Pack, 1 Operator, Small Project

1 x box (50 pairs) surgical gloves, 1x 140x21 paddle roller, 1x 75x21 paddle roller, 4x 150mm deep pile resin roller refill, 2x 150mm short pile topcoating roller refill, 1x 150mm roller arm, 2x 75mm Brush, 3x 5 litre bucket, 1x graduated measuring cup, 2.5 litre acetone, 1x telescopic extension arm, 1x 250ml liquid hand cleaner.

FIBREGLASS POND LINING TOOL PACKS



TP6 Tool Pack, 2 Operator, Large Project

1 x box (50 pairs) surgical gloves, 2x 225x21 paddle roller, 10x 180mm deep pile resin roller refill, 5x 180mm short pile topcoating roller refill, 2x 180mm roller arm, 2x 75mm brush, 5x 10 litre bucket, 5 litre acetone, 2x telescopic extension arms, 1 litre paste hand cleaner.

PRYMAX POND SEALER



Prymax Pond Sealer Clear/Green/Black/Blue

- Contains SupaPol high polyurethane formula
- Fast Curing
- Can be applied in high humidity & low temps
- Forms a hard plastic moisture barrier

PRYMAX POND/DAMP SEAL THINNERS



Prymax Damp and Pond Seal Thinners

Prymax thinners is used to thin Prymax Damp Seal and Prymax Pond Seal (NOT Prymax GRP Primer) for application to dense wood, stone, concrete to aid first coat absorption into the substrate for improved bonding.

GENERAL FIBREGLASS REPAIR KITS

Comprehensive kits that contain all you need to mould or repair with fibreglass. Bonds to many different materials including wood, metal, brick, masonry, GRP, ceramics and more. Small kits covers an area up to 1/2 m². Large kit covers and area up to 1m².



General Fibreglass Repair Kit Small

Contents: 500g general purpose resin, 25g catalyst, ½m² 300g chopped strand mat, 3x 12mm brushes, 3x 385ml calibrated mixing cups, 10ml syringe, 3x stirring sticks, 3 pairs latex gloves.

General Fibreglass Repair Kit Large

Contents: 2x 500g general purpose resin, 25g catalyst, 1m² 300g chopped strand mat, 3x 12mm brushes, 3x 25mm brushes, 1x 1400ml calibrated cup, 3x 385ml calibrated mixing cups, 10ml

WEST SYSTEM BOAT REPAIR KIT



Kit Contents:

250g 105 Resin; 50g 205 Hardener; 1m 450g 125mm biaxial glass tape; 1m 175g 75mm woven glass tape; 1m 100mm peel ply tape; 402 milled fibre filler; 409 microsphere filler; 2 prs gloves; 1 Reusable mixing stick; 3 mixing pots; 2 brushes; 2 syringes; instructions.

This new kit compliments the current west system product range and has been developed to assist those who wish to carry out small basic repairs to glassfibre boats. The kit includes everything required to successfully complete a range of repairs.

The instructions included with the kit provide detailed step by step explanations for 4 common repair to glass fibre boats, these are:

- Repairing minor cracks and scratches.
- Repairing cored deck, hull and bulkhead delamination.
- Repairing holes and punctures.
- Refitting and replacing hardware.

WEST SYSTEM MINI PACK

Each resealable pack contains epoxy resin, hardener, 406 & 407 fillers, tools, gloves, cleaning pads and instructions. Ideal for repair work. A comprehensive kit for small repairs.



Contains:

250g 105 Resin, 50g 205 Hardener, 403 Microfibres, 407 Low Density Filler, 3 Graduated Cups, 2 Pairs Gloves, 2 Mixing Sticks, 2 Syringes & Instruction Leaflet.

LITTLE MAL SURFBOARD REPAIR KIT

Our repair kits have everything you need to fix dings, cracks or even breaks in fibreglass surfboards.



Contents:

250g Xtreme surfboard resin inc catalyst, 50ml wax solution, 100ml acetone, 6oz cloth (50cm x 50cm), various sandpaper sheets, 100g Qcell glass bubbles, 2 plastic spreaders, 2 x 12mm brush, 3 x mixing sticks, surgical gloves, 2 calibrated cups, 1 x 10ml syringe, dust mask, masking tape and instructions.

BIG MAL SURFBOARD REPAIR KIT

Our repair kits have everything you need to fix dings, cracks or even breaks in fibreglass surfboards.



Contents:

500g Xtreme surfboard resin inc catalyst, 50ml wax solution, 100ml acetone, 6oz cloth (50cm x 100cm), various sandpaper sheets, 100g Qcell glass bubbles, 4 plastic spreaders, 2 x 12mm brush, 1 x 25mm brush, 6 x mixing sticks, surgical gloves, 3 calibrated cups, 2 x 10ml syringe, dust mask, masking tape and instructions.

FIBREGLASS ROOF REPAIR KIT



This comprehensive kit contains everything you will need to make an effective repair, or a replacement of up to 1m², to a leaking or damaged fibreglass roof. This kit not only includes materials but also all the tools required in one box.

- Repair or replace up to 1m²
- All materials required
- All tools required
- Everything needed in one box



PURECAST™

CLEAR EPOXY RESIN

PureCast Fast Cure is a water clear epoxy for small castings and coatings up to 10mm thick. Popular for table tops, artwork coating and much more. This solvent free epoxy is very low odour and a simple 2 to 1 mixing ratio (by volume). PureCast is often used completely clear, it is also compatible with our complete range of pigments. Be sure to conduct a test to ensure compatibility.

The excellent clarity and transparency makes the resin system particularly suitable for the protection and decoration of :

- Artwork (paintings, sculptures and layered collage).
- Wood and timber artifacts.
- Clocks, pictures and puzzles.
- Tabletops and bar counters.*
- Badges, emblems and jewellery manufacture.
- Flower-setting and paperweights



PureCast Slow Cure is a water clear epoxy for large castings from 10-50mm thick. Popular for river tables and other large single pour castings. This solvent free epoxy is very low odour and a simple 2 to 1 mixing ratio (by volume). Supplied as a 2 part kit.

An epoxy resin specially designed for use in industrial applications requiring a strong, durable casting where low colour and high UV resistance is required. This slow curing resin will cast 10- 50mm without overheating and will naturally degass with no vacuum equipment needed.

Use some of our pigment pastes & powders to create stunning effects.

WATER CLEAR CASTING KIT 1KG



Ready to go, comprehensive kit with everything you need to create clear castings

Kit Contents: 1kg water clear resin including catalyst, 1x casting mould, 3x 385ml mixing cup, 2x 1400ml mixing cup, 3x 10ml syringe, 10x mixing sticks, 4pr surgical gloves.

WATER CLEAR CASTING RESIN



A water clear casting resin for embedding and casting paperweights,specimens etc. Pot life at 20°C using 1% catalyst is approx.20 minutes. To help prevent cracking, use minimum catalyst and place in water bath.

WHITE FASTCAST



A low odour two component polyurethane system which is designed for thin sections, or castings up to 20mm thick that require very quick demould times and can be used unfilled. Good thermal resistance. With low viscosity it produces excellent surface detail and finish. Does not shatter like polyester casts. Simulates polypropylene when fully cured.

White Fastcast is not suitable for pigmenting

- Casting thickness 2-15mm
- Pot Life: 4-5 Mins
- Demould: 20-25 Mins

STANDARD FASTCAST



A low odour two component polyurethane system which is designed for thin sections, or castings up to 20mm thick that require very quick demould times and can be used unfilled. Good thermal resistance. With low viscosity it produces excellent surface detail and finish. Does not shatter like polyester casts. Simulates polypropylene when fully cured.

- Pot Life (200g @ 20°C) : 2 mins
- Demould (200g @ 20°C) : 20 mins
- Minimum casting thickness : 2mm



Image Courtesy of Marks Model Bits



Image Courtesy of Ben of Kent Props

LATEX DIPPING RUBBER



This is a natural air drying liquid rubber used to make thin elastic self releasing moulds by repeated dipping of the former. A thickening agent can also be used. It is best used to reproduce simple shapes without too much detail such as chess pieces.

LATEX THIXO GEL



A thixotropic gel, which is used to thicken latex for brush on application. Add at the rate of 5% to 10% as required.

RTV240 SILICONE

This is a top quality, two component, addition cured silicone rubber for mould making. Used for moulding of complicated parts with precise dimensions. Repetitive casting applications, ceramics, vacuum casting moulds and general mould making. RTV240 is especially good for resin casting with much better resistance and surface finish, particularly with water clear resin. Medium 25 shore hardness, colourless and translucent. Supplied as a kit with hardener included. Pot Life - 120 mins. Demould - 24 hours



RTV20 AND RTV25



This material produces the highest quality rubber moulds with extremely fine detail and minimal shrinkage. They will produce hundreds of castings depending on the complexity of the shape. This self releasing liquid rubber is activated by the addition of a catalyst, poured over the former and cured at room temperature.

- RTV20 is a soft condensation cured silicone.
- RTV25 is a medium soft, condensation cured silicone.
- All kits supplied with choice of hardener speed (see table)

RTV 5% Catalyst	Pot Life	Demould	Full Cure @ 200C
Green (Slow)	60mins	16-24 Hours	7 Days
Yellow (Fast)	15-30mins	2-4 Hours	10 Hours

FLEXIL RTV THIXOTROPIC ADDITIVE TA2

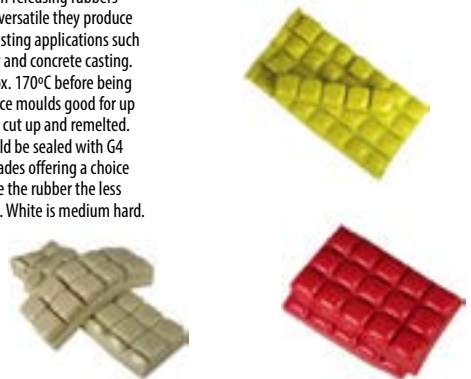


Specially formulated thixotropic agent for use with CFS RTV 20/25 Silicone Moulding Rubbers. Produces an attractive butter like consistency within seconds of addition to catalysed liquid rubber.

NOT SUITABLE FOR RTV 240

FLEXIL

Vinyl rubbers are re-usable self releasing rubbers supplied in solid blocks. Very versatile they produce moulds for a wide range of casting applications such as polyesters, epoxies, plaster and concrete casting. They require heating to approx. 170°C before being poured over formers to produce moulds good for up to 10 castings. Moulds can be cut up and remelted. Porous or damp formers should be sealed with G4 sealer. Available in various grades offering a choice of flexibility. The more flexible the rubber the less durable. Yellow is the hardest. White is medium hard. Red is the softest.



HERCULITE 2 CASTING PLASTER



A hard white plaster for use where colour, high strength and surface durability are required in fibrous plasterwork, giftware and modelling applications. Plaster/water ratio by weight 100/42 (2.38kg/litre) Setting time 6 to 20 minutes.

CRYSTACAL R CASTING PLASTER



An extra hard white plaster for use where high strength and surface hardness are important. Plaster/water ratio by weight 100/35 (2.86kg/litre) Setting time 10 to 25 minutes.

MODROC PLASTER BANDAGE



A bulk pack of plaster impregnated bandage for modelling and sculptures.

ALGINATE



A semi flexible moulding compound, normally used for taking dental impressions. Excellent for taking moulds from in situ mouldings. Simply mix alginate with water and apply. Working time is 5 minutes. Demould time is 15 minutes.

PLASTILIN



- Easy to shape and work when heated
- Stable at room temperature
- Virtually odourless

Plastilin is a waxed based plasticine which is permanently malleable and almost odourless, ideal for modelling in workshops, schools and for craft and play.

NAKIPLAST MODELLING CLAY 650G



The Nakiplast modeling clay is soft, pliable, permanently plastic and brightly coloured.

- Permanently plastic, high-quality wax dough with beeswax
- Bright colour
- Soft and supple right from the start
- Does not stain hands
- Ideal as a joint filler

NEWCLAY MODELLING CLAY



Newclay is an off-white clay, which because it is nylon reinforced, is not brittle. The clay makes strong models, even those made by small children. However, for older children and adults, there is a hardener available which when applied to the clay will increase the strength still further.

NEWCLAY HARDENER 4oz 125gm



Mix 50g H1 into 500ml of very hot water and apply 2-3 washes with a brush to dried newclay. Your clay can then be hardened still further by placing in a cold oven and warmed to a maximum of 200°C. Once this temperature is reached then remove item from oven.

TERMS & CONDITIONS

About Us

CFS Fibreglass Supplies is completely dedicated to your total satisfaction. If you have any suggestions or comments, please email us at sales@cfsnet.co.uk.

CFS Fibreglass is a trading name of CFSNET Ltd. Where the terms 'We', 'Our', 'Us' and 'The Company' are used this means CFS. Please see the 'Contact Us' section in the front of the catalogue for our full address and contact details. The terms 'You', 'Your' and 'The Customer' are used to mean the person(s) purchasing from CFS.

Our contract shall be governed by and in accordance with English law.

The information given in this brochure is to the best of our knowledge true and accurate. As conditions for use of our products is beyond our control, we cannot accept responsibility for any damage or losses resulting from information given.

Making a Purchase

Making a purchase could not be easier. Just browse our catalogue and telephone or email us with your requirements. You can also place your order online at www.cfsnet.co.uk.

Occasionally we will not have the amount of stock that may be required to fulfill an order, if this happens, you will be contacted by phone and/or email on the day we receive the order. We will contact you to inform you of the revised delivery date, back order the items or offer suitable alternatives. If the options presented are not suitable you can cancel either the items in question or the whole order. If we substitute the items and the substitutes are unsatisfactory then you have the right to cancel these items and we will collect them. If we are unable to reach you, the order will be put on hold until you have contacted us to discuss the order.

All goods advertised are subject to availability. We are not obliged to accept your order and we have the right to decline or refuse an order or limit an order quantity.

Making a Payment

In order to protect you and us from debit and credit card fraud, we reserve the right to send first and/or large orders to the cardholder's address only or to seek more information from you. We will always contact you on these occasions.

We accept Visa, Mastercard, Maestro & Switch credit and debit cards. We do not accept American Express. We also accept payments by Paypal or BACS bank transfers but please be aware that we will not release or send the goods until payment has cleared through our account.

Although we strive to be accurate with all product details and prices, if a product or price is incorrect due to a typographical error we have the right to refuse or cancel any order whether or not the order has been confirmed. If your credit or debit card has already been charged and we subsequently cancel your order, we will immediately refund the full amount.

We do not store any of your credit or debit card information, our systems automatically delete your card details as soon as a payment has been processed. Please be aware that if you choose to send us your credit or debit card details by email, it is not a secure method and you do so at your own risk.

Tax Charges

VAT is applied to your order at a rate of 20%. If you have any queries regarding VAT on your order please contact us for help.

Prices

Prices displayed in the catalogue or on our website do not include VAT or delivery costs. The total costs will be provided when you speak to an advisor or place your order online. Catalogue prices are correct at the time of going to press and the prices shown supersede all previous price lists. We reserve the right to change prices at any time to reflect market conditions but we will confirm the current price with you before accepting your order.

Delivery & Shipping

Please refer to the 'Delivery' section for information on delivery prices, areas and time periods.

We will deliver to the delivery address as instructed by the purchaser. The purchaser is responsible for ensuring an authorised person is present at the address to sign for and take delivery of the goods. CFS and/or their couriers will not be held liable for any losses if an unauthorised person takes delivery of the goods.

All larger items and consignments of our goods are classed as hazardous and therefore the delivery drivers cannot leave goods unattended. Please ensure that someone is present at the delivery address to sign for the goods. If this may be a problem, please call us for advice.

Most small items will be delivered by parcel courier and they can be left somewhere secure if you provide clear instructions at the time of order. There is a 'special instructions' box on the 'delivery address' page of the website for this purpose.

Only small non-hazardous items that are not liquid may be sent through the post. Please call to discuss.

We will assume that all delivery addresses can be accessed easily by lorries. If not, then it is your responsibility to inform us of any access restrictions to the delivery address at the time of order.

Our couriers will try to deliver your order twice. If unable to deliver then they will leave contact cards. If they do not receive contact from you or us within the following week, the order will be returned to CFS. If you request an order to be re-sent from CFS to yourself after it has been returned to CFS for the above reasons, further delivery charges will be incurred.

Delivery time periods are estimates and cannot be guaranteed. CFS uses third party courier companies and on rare occasions, delays may occur due to reasons beyond our and their control.

Because delivery dates and times cannot be guaranteed, purchasers are not entitled to consider late delivery to automatically be a breach of contract. For these reasons, we strongly recommend that you do not book any contractors, tradesmen or urgent work until you have received and checked the goods.

Our liability to you shall not, in any event, include losses to third parties or losses related to any business of yours, such as profits or business interruption, neither will we be responsible to you for any other loss which is not a foreseeable consequence of us being in breach of these terms and conditions or our legal duties.

Returns Policy

We take pride in the quality of our products and hope that you will find them satisfactory. In the event of a fault or an error we will replace it as soon as possible. If we are unable to replace the item or provide a suitable alternative then we will refund you.

Please ensure that you check your items carefully upon receipt and notify us of any damaged, missing or incorrectly sent items within 7 days of receiving the goods so that we can resolve the problem straight away.

We rely on third party couriers who are usually very careful, but very occasionally problems can occur. If your goods arrive damaged, please be prepared to provide photographs to us so that we can see the problem.

We cannot be held responsible or liable if you have made a mistake in ordering, for example, by ordering the wrong items or ordering too much, but we will try and help where possible. In these situations we reserve the right to charge for the cost of any collection and/or a 15% handling charge, this does not affect any rights you may have under the legislation below.

Under the Consumer Contracts (Information, Cancellation and Additional Charges) Regulations 2013 (The UK implementation of the EU Directive on Consumer Rights 2011/83/EC), you may have the right to cancel your order and claim a refund.

These cancellation rights may only apply to distance sales transactions (remote sales conducted largely or wholly by telephone, internet or post), they must be carried out within the European Union and they only apply to private customers buying for personal use, they do not apply to customers buying for or in the course of a trade or business.

To exercise these rights you can either fill out the model cancellation form included in this catalogue or you may contact us by phone, email, fax or letter and tell us you wish to cancel within 14 days of you receiving the goods. For your records it is advisable to state your intentions in writing. If you have already received the goods then they must be unused, with the original packaging and in the same condition that they reached you. If not, you may lose your right to cancel.

We will charge the customer the reasonable cost of collecting the cancelled goods. As an estimate, the collection costs will be the same as the original delivery charge for the order. Alternatively a customer may arrange to return the goods to CFS themselves at their own expense and CFS will refund the cost of the items upon receipt of the goods.

If you are buying in the course of a trade or business, or you are based outside the European Union, please be aware that you may not have the automatic right to cancel your order with CFSNET Ltd. However, please contact us with any concerns and we will strive to assist you where we can. This does not affect your statutory rights as may be applicable under UK legislation.

Complaints Procedure

We put every effort into providing quality products and a seamless service but we recognise that sometimes things can go wrong. If you have a concern please contact us as soon as possible and we will take steps to address any issues.

Please contact us by telephone, email, fax or by post as soon as the concern arises and we will acknowledge your complaint within 2 working days. It may take longer to resolve but we will assign a person to your case and they will ensure they continue to maintain contact until the matter is resolved.

Restricted Sales

By purchasing any items through our website or over the telephone you are confirming that you are over 18 years of age.

It is illegal to sell knives, solvents and volatile substances to persons under the age of 18.

Privacy & Personal Information

Information we may collect about you and how we use it

When you place an order with us or set up a trade credit account with us we ask for a variety of information from you such as: your name; your contact details; the type of business you are in; two references if you require a credit account; and your card details. All this information is necessary to process your order; set you up as a trade account customer; process payments; enable us to inform you of any delays or problems and occasionally send you promotions, newsletters and questionnaires if you have selected to subscribe to our emails.

Our lawful basis for collecting your data is either through a contract to supply you goods; consent (you've told us we can process your data for a specific purpose when placing an order with us or filling out a new account form); or legitimate interests (you buy from us already so it's reasonable to expect that you may be interested in other marine products/want to receive our new catalogue etc). If you have previously opted in to receive our mailings, you do still have the right to unsubscribe from our mailings at any time by clicking the 'unsubscribe' link that is at the end of each email. Please allow up to 10 days for your request to be updated on our system.

We will never pass your details onto other companies, except those who directly assist us in our own marketing. These companies currently include MailChimp (who delivers our marketing emails). We gather statistics around email opening and clicks using industry standard technologies to help us monitor and improve our marketing emails.

We will not sell, distribute or lease your personal information to third parties unless we are required by law to do so.

You may request details of personal information which we hold about you under the Data Protection Act 1998. If you would like a copy of the information held on you please write to CFSNET LTD, United Downs Industrial Park, St Day, Redruth, Cornwall, TR16 5HY.

If you believe that any information we are holding on you is incorrect or incomplete, please write to us at the above address. We will promptly correct any information found to be incorrect.

We respect your privacy and are committed to protecting it. Your account will be closed and all of your data will be deleted if you haven't bought from us again within 2 years.

Information we may collect about you and how we use it

Your details and orders are stored on our secure cloud based server, which is protected with login and password controls and new account forms with attached information are kept filed in the office and then stored securely once your account is up and running. We are legally required to keep all invoices for six years which are stored in our database. We do not, however, store your card details. All card payments are protected in line with PCI DSS industry standards and we ensure that we are compliant with their requirements each year.

Our website uses secure server software to protect your information whenever you place an order or access your account information. The software encrypts all information you input before it is sent to us to minimise the risk of this being intercepted before it is received by us.

Security

We are committed to ensuring that your information is secure. In order to prevent unauthorised access or disclosure, we have put in place suitable physical, electronic and managerial procedures to safeguard and secure the information we collect.

Thanks to all our customers and suppliers for their contributions to this catalogue.

SHIPPING

Shipping and Handling

Orders required to be delivered on the next working day must be placed before 1pm. All orders placed after 1pm are likely to be despatched on the following working day.

England and Wales

Weight	Next Day	3 Day
up to 1kg	£6.95	£6.10
up to 2kg	£8.60	£6.95
up to 5kg	£9.80	£7.95
up to 10kg	£10.50	£9.25
up to 15kg	£11.55	£10.45
up to 30kg	£17.65	£14.90
up to 50kg	£26.60	£22.50
up to 60kg	£28.90	£24.85
up to 70kg	£35.25	£27.15
up to 75kg	£36.40	£28.35
up to 80kg	£37.00	£29.90
up to 90kg	£41.60	£35.20
up to 100kg	£43.35	£37.55
up to 250kg	£67.25	£46.20
up to 450kg	£71.05	£48.50
up to 1000kg	£79.70	£49.65

Scottish Highlands

Weight	3 Day
up to 5kg	£29.80
up to 10kg	£31.15
up to 20kg	£37.80
up to 30kg	£51.05
up to 50kg	£59.80
up to 100kg	£67.85
up to 150kg	£80.35
up to 200kg	£92.55
over 200kg	P.O.A.

Northern Scotland postcodes include:
IV, KW, PA20-80, PH5-50 & AB

Cornwall

We will arrange free delivery within Cornwall for orders over £150 ex VAT.

For orders below £150 see table below.

Weight	3 Day
up to 5kg	£5.80
up to 25kg	£7.30
up to 50kg	£14.65

N Ireland, Scottish Islands, Isle of Man, Channel Islands

Weight	3 Day
up to 5kg	£29.80
up to 10kg	£31.15
up to 20kg	£37.80
up to 30kg	£51.05
over 50kg	P.O.A.

Delivery prices shown are exclusive of VAT.

Orders are processed and deliveries undertaken during working days only. Working days are Monday to Friday and do not include Saturdays, Sundays or bank holidays. 3 day deliveries may be delivered sooner. 3 working days does not include the day of despatch.

We will assume that all delivery addresses can be accessed easily by lorries. If not, then it is your responsibility to inform us of any access restrictions to the delivery address at the time of order.

CFS use specialist carriers to deliver your items. It is your responsibility to ensure that someone is present at the delivery address to sign for your order. Instructions can be given for smaller consignments, in most cases large orders cannot be delivered without signature. Please call CFS Sales 01209 821028 to check.

International Delivery:

CFS can deliver internationally to most countries, European and Worldwide. Please call one of our sales team with your requirements and they will search for the best transport costs and lead times.

Safety in the workplace

The pictograms for labelling chemical products have changed. Prevent workplace injury and diseases by learning more about the pictograms.

Be aware of what these two similar pictograms mean.

This one warns against flammable gases, aerosols, liquids and solids:

- Self-heating substances & mixtures
- Pyrophonic liquids & solids, that may catch fire when in contact with air
- Substances & mixtures which, in contact with water, emit flammable gases
- Self-reactive substances or organic peroxides that may cause fire when heated



If you find this pictogram on the label, it means you are dealing with oxidising gases, solids and liquids, which can cause or intensify fire and explosion



A substance or mixture with this pictogram has one or more of the following effects:

- Is carcinogenic
- Affects fertility and the unborn child
- Causes mutations
- Is a respiratory sensitiser, may cause allergy, asthma or breathing difficulties when inhaled
- Is toxic to specific organs
- Aspiration hazards, may be fatal or harmful if swallowed or if it enters airways



Know that you are handling a chemical that is acutely toxic in contact with skin, if inhaled or ingested, which may even be fatal.



Whenever you use a chemical with this pictogram on it, be aware that it is corrosive and can cause severe skin burns and eye damage. It is also corrosive to metals.



This pictogram warns that a substance is hazardous to the environment and causes aquatic toxicity.



This pictogram means one or more of the following:

- Acutely toxic (harmful)
- Causes skin sensitisation, skin and eye irritation
- Respiratory irritant
- Narcotic, causes drowsiness or dizziness
- Hazardous to the Ozone layer



Material Safety Data Sheets (MSDS) available for each product - please request.

Cancellation Form

As required under the Consumer Contracts (Information, Cancellation and Additional Charges) Regulations 2013 (EU Directive on Consumer Rights 2011/83/EC).

To:

CFSNET LTD t/a CFS Fibreglass
 United Downs Industrial Estate
 St Day
 Redruth
 Cornwall
 TR16 5HY
 UK

Tel: 01209 821028

Email: sales@cfsnet.co.uk

I/We hereby give notice that I/we cancel my/our contract of sale of the following goods received on (date).....

Order Reference Number (if known).....

Customer Name(s).....

Customer Address.....

.....

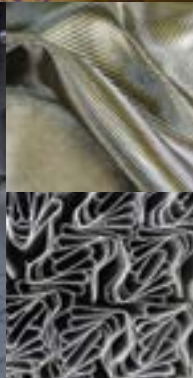
.....

.....

Customer Signature.....

(only if this form is notified on paper)

Date.....



CFS Fibreglass,
United Downs Industrial Park,
Redruth, Cornwall TR16 5HY

CFS Fibreglass is a trading name of
CFSNET LTD
Company Registration Number:
8244956