

# ROOFING CATALOGUE

Established in Cornwall in 1974, we have over 45 years solid experience in the fibreglass industry, keeping pace with the fast changing technical advances and developments. In 2001, we became industry leaders by creating our own website and promoting online ordering. Now, 21 years later, we are still top of our game. We bulk purchase and import our materials from around the world, direct from the manufacturers wherever possible, in order to give our customers the best quality products at the lowest prices.

Whether you are an individual DIY hobbyist or a large scale manufacturer, novice or professional, require just a kilo or several tonnes, we are your one-stop-shop for everything fibreglass and more. If you can't see what you need in our catalogue, we can probably source it so please ask!



METRODECK	3	TRIMS	15
SILVERSEEL	7	TOOLS & ACCESSORIES	18
TRADE LINE	9	CSM, BOARDS & BARRIERS	20
METROFLEX	11	PROTECTIVE EQUIPMENT	21

**SILVERSEEL**



**PRYMAX**




**SterlingOSB®**  
Norbord

Please note: prices are subject to change. We will always confirm final costs with you before completing your purchase.



# YOUR ONE STOP ONLINE SHOP



**FREE** Online & Telephone  
Technical advice!  
Call: 01209 821028

Telephone lines open :  
**08:30 - 17:00**

On-site shop open :  
**08:00 - 16:45**

Email queries :  
**sales@cfsnet.co.uk**



**Delivery Nationwide &  
International \***



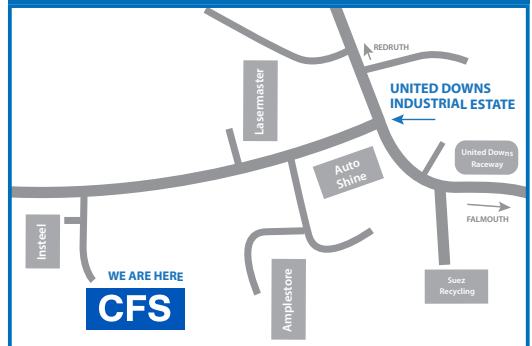
**Competitive  
Bulk Prices! \*\***

\* Service may not be available in some countries

\*\* Call our sales team for a quote



## HOW TO FIND US





## Metrodeck Roof Kits

Professional GRP roofing base resin and topcoat system from CFS. Specifically designed for fibreglass roofing applications, this system has undergone extensive external fire exposure roof tests and achieved rating BS476 part 3 FAA. The finished system coloured BS18B25 (grey) provides excellent properties. Flexible, UV stable, chemical and heat resistant. Resists foot traffic and thermal expansion. Basecoat & topcoat supplied in 20kg and 5kg cans.

### RP50 METRODECK MATERIAL PACK



RP50 Metrodeck 2 layer pack 8m<sup>2</sup>

Kit Contents: 1x 20kg Metrodeck Polyester Resin (includes catalyst), 1x 50m roll of 75mm Woven Glass Tape, 10kg 450g Chopped Strand Mat, 1x 5kg Metrodeck Grey Topcoat (includes catalyst).

### RP51 METRODECK MATERIAL PACK



RP51 Metrodeck 2 layer pack 15m<sup>2</sup>

Kit Contents: 2x 20kg Metrodeck Polyester Resin (includes catalyst), 1x 50m roll of 75mm Woven Glass Tape, 15kg 450g Chopped Strand Mat, 2x 5kg Metrodeck Grey Topcoat (includes catalyst).

### RP52 METRODECK MATERIAL PACK



RP52 Metrodeck 2 layer pack 25m<sup>2</sup>

Kit Contents: 3x 20kg Metrodeck Polyester Resin (includes catalyst), 1x 50m roll of 75mm Woven Glass Tape, 33kg 450g Chopped Strand Mat, 3x 5kg Metrodeck Grey Topcoat (includes catalyst).

### RP53 METRODECK MATERIAL PACK



RP53 Metrodeck 2 layer pack 30m<sup>2</sup>

Kit Contents: 4x 20kg Metrodeck Polyester Resin (includes catalyst), 1x 50m roll of 75mm Woven Glass Tape, 33kg 450g Chopped Strand Mat, 1x 20kg & 20kg Metrodeck Grey Topcoat (includes catalyst).

### RP54 METRODECK MATERIAL PACK



RP54 Metrodeck 2 layer pack 50m<sup>2</sup>

Kit Contents: 6x 20kg Metrodeck Polyester Resin (includes catalyst), 1x 50m roll of 75mm Woven Glass Tape, 48kg 450g Chopped Strand Mat, 1 x 20kg and 2 x 5kg Metrodeck Grey Topcoat (includes catalyst).

### RP30 METRODECK MATERIAL PACK



RP30 Metrodeck 1 layer 450g CSM 7m<sup>2</sup>

Kit Contents: 2x 5kg Metrodeck Polyester Resin (includes catalyst), 1x 50m roll of 75mm Woven Glass Tape, 5kg 450g Chopped Strand Mat, 1 x 5kg Metrodeck Grey Topcoat (includes catalyst).

## RP31 METRODECK MATERIAL PACK



RP31 Metrodeck 1 layer 450g CSM 16m<sup>2</sup>

Kit Contents: 1x 20kg Metrodeck Polyester Resin (includes catalyst), 1x 50m roll of 75mm Woven Glass Tape, 10kg 450g Chopped Strand Mat, 2 x 5kg Metrodeck Grey Topcoat (includes catalyst).

## RP32 METRODECK MATERIAL PACK



RP32 Metrodeck 1 layer 450g CSM 30m<sup>2</sup>

Kit Contents: 2 x 20kg Metrodeck Polyester Resin (includes catalyst), 1x 50m roll of 75mm Woven Glass Tape, 15kg 450g Chopped Strand Mat, 1 x 20kg Metrodeck Grey Topcoat (includes catalyst).

## RP33 METRODECK MATERIAL PACK



RP33 Metrodeck 1 layer 450g CSM 40m<sup>2</sup>

Kit Contents: 3 x 20kg Metrodeck Polyester Resin (includes catalyst), 1x 50m roll of 75mm Woven Glass Tape, 20kg 450g Chopped Strand Mat, 1 x 20kg & 1 x 5kg Metrodeck Grey Topcoat (includes catalyst).

## RP34 METRODECK MATERIAL PACK



RP34 Metrodeck 1 layer 450g CSM 60m<sup>2</sup>

Kit Contents: 4 x 20kg Metrodeck Polyester Resin (includes catalyst), 1x 50m roll of 75mm Woven Glass Tape, 32kg 450g Chopped Strand Mat, 2 x 20kg Metrodeck Grey Topcoat (includes catalyst).

## RP40 METRODECK MATERIAL PACK



RP40 Metrodeck 1 layer 600g CSM 8m<sup>2</sup>

Kit Contents: 3 x 5kg Metrodeck Polyester Resin (includes catalyst), 1x 50m roll of 75mm Woven Glass Tape, 5kg 600g Chopped Strand Mat, 1 x 5kg Metrodeck Grey Topcoat (includes catalyst).

## RP41 METRODECK MATERIAL PACK



RP41 Metrodeck 1 layer 600g CSM 15m<sup>2</sup>

Kit Contents: 1 x 5kg & 1 x 20kg Metrodeck Polyester Resin (includes catalyst), 1x 50m roll of 75mm Woven Glass Tape, 10kg 600g Chopped Strand Mat, 2 x 5kg Metrodeck Grey Topcoat (includes catalyst).

## RP42 METRODECK MATERIAL PACK



RP42 Metrodeck 1 layer 600g CSM 24m<sup>2</sup>

Kit Contents: 2 x 20kg Metrodeck Polyester Resin (includes catalyst), 1x 50m roll of 75mm Woven Glass Tape, 15kg 600g Chopped Strand Mat, 1 x 20kg Metrodeck Grey Topcoat (includes catalyst).

## RP43 METRODECK MATERIAL PACK



RP43 Metrodeck 1 layer 600g CSM 36m<sup>2</sup>

Kit Contents: 3 x 20kg Metrodeck Polyester Resin (includes catalyst), 1x 50m roll of 75mm Woven Glass Tape, 25kg 600g Chopped Strand Mat, 1 x 20kg Metrodeck Grey Topcoat (includes catalyst).

## RP44 METRODECK MATERIAL PACK



RP44 Metrodeck 1 layer 600g CSM 50m<sup>2</sup>

Kit Contents: 4 x 20kg Metrodeck Polyester Resin (includes catalyst), 1x 50m roll of 75mm Woven Glass Tape, 32kg 600g Chopped Strand Mat, 1x20kg & 2x 5kg Metrodeck Grey Topcoat (includes catalyst).

## RP90 METRODECK MATERIAL PACK



RP90 Metrodeck RAL7016 2 layer pack 8m<sup>2</sup>

Kit Contents: 1x 20kg Metrodeck Polyester Resin (includes catalyst), 1x 50m roll of 75mm Woven Glass Tape, 10kg 450g Chopped Strand Mat, 1x 5kg Metrodeck RAL7016 Topcoat (includes catalyst).

## RP91 METRODECK MATERIAL PACK



RP91 Metrodeck RAL7016 2 layer pack 15m<sup>2</sup>

Kit Contents: 2x 20kg Metrodeck Polyester Resin (includes catalyst), 1x 50m roll of 75mm Woven Glass Tape, 15kg 450g Chopped Strand Mat, 2x 5kg Metrodeck RAL7016 Topcoat (includes catalyst).

## RP92 METRODECK MATERIAL PACK



RP92 Metrodeck RAL7016 2 layer pack 25m<sup>2</sup>

Kit Contents: 3x 20kg Metrodeck Polyester Resin (includes catalyst), 1x 50m roll of 75mm Woven Glass Tape, 33kg 450g Chopped Strand Mat, 3x 5kg Metrodeck RAL7016 Topcoat (includes catalyst).

## RP93 METRODECK MATERIAL PACK



RP93 Metrodeck RAL7016 2 layer pack 30m<sup>2</sup>

Kit Contents: 4x 20kg Metrodeck Polyester Resin (includes catalyst), 1x 50m roll of 75mm Woven Glass Tape, 33kg 450g Chopped Strand Mat, 1x 20kg & 20kg Metrodeck RAL7016 Topcoat (includes catalyst).

## RP94 METRODECK MATERIAL PACK



RP94 Metrodeck RAL7016 2 layer pack 50m<sup>2</sup>

Kit Contents: 6x 20kg Metrodeck Polyester Resin (includes catalyst), 1x 50m roll of 75mm Woven Glass Tape, 48kg 450g Chopped Strand Mat, 1 x 20kg and 2 x 5kg Metrodeck RAL7016 Topcoat (includes catalyst).

## RP100 METRODECK MATERIAL PACK



RP100 Metrodeck RAL7016 1 layer 450g CSM 7m<sup>2</sup>

Kit Contents: 2x 5kg Metrodeck Polyester Resin (includes catalyst), 1x 50m roll of 75mm Woven Glass Tape, 5kg 450g Chopped Strand Mat, 1 x 5kg Metrodeck RAL7016 Topcoat (includes catalyst).

## RP101 METRODECK MATERIAL PACK



RP101 Metrodeck RAL7016 1 layer 450g CSM 16m<sup>2</sup>

Kit Contents: 1x 20kg Metrodeck Polyester Resin (includes catalyst), 1x 50m roll of 75mm Woven Glass Tape, 10kg 450g Chopped Strand Mat, 2 x 5kg Metrodeck RAL7016 Topcoat (includes catalyst).

## RP102 METRODECK MATERIAL PACK



RP102 Metrodeck RAL7016 1 layer 450g CSM 30m<sup>2</sup>

Kit Contents: 2 x 20kg Metrodeck Polyester Resin (includes catalyst), 1x 50m roll of 75mm Woven Glass Tape, 15kg 450g Chopped Strand Mat, 1 x 20kg Metrodeck RAL7016 Topcoat (includes catalyst).

## RP103 METRODECK MATERIAL PACK



RP103 Metrodeck RAL7016 1 layer 450g CSM 40m<sup>2</sup>

Kit Contents: 3 x 20kg Metrodeck Polyester Resin (includes catalyst), 1x 50m roll of 75mm Woven Glass Tape, 20kg 450g Chopped Strand Mat, 1 x 20kg & 1 x 5kg Metrodeck RAL7016 Topcoat (includes catalyst).

## RP104 METRODECK MATERIAL PACK



RP104 Metrodeck RAL7016 1 layer 450g CSM 60m<sup>2</sup>

Kit Contents: 4 x 20kg Metrodeck Polyester Resin (includes catalyst), 1x 50m roll of 75mm Woven Glass Tape, 32kg 450g Chopped Strand Mat, 2 x 20kg Metrodeck RAL7016 Topcoat (includes catalyst).

## RP110 METRODECK MATERIAL PACK



RP110 Metrodeck RAL7016 1 layer 600g CSM 8m<sup>2</sup>

Kit Contents: 3 x 5kg Metrodeck Polyester Resin (includes catalyst), 1x 50m roll of 75mm Woven Glass Tape, 5kg 600g Chopped Strand Mat, 1 x 5kg Metrodeck RAL7016 Topcoat (includes catalyst).

## RP111 METRODECK MATERIAL PACK



RP111 Metrodeck RAL7016 1 layer 600g CSM 15m<sup>2</sup>

Kit Contents: 1 x 5kg & 1 x 20kg Metrodeck Polyester Resin (includes catalyst), 1x 50m roll of 75mm Woven Glass Tape, 10kg 600g Chopped Strand Mat, 2 x 5kg Metrodeck RAL7016 Topcoat (includes catalyst).

## RP112 METRODECK MATERIAL PACK



RP112 Metrodeck RAL7016 1 layer 600g CSM 24m<sup>2</sup>

Kit Contents: 2 x 20kg Metrodeck Polyester Resin (includes catalyst), 1x 50m roll of 75mm Woven Glass Tape, 15kg 600g Chopped Strand Mat, 1 x 20kg Metrodeck RAL7016 Topcoat (includes catalyst).

## RP113 METRODECK MATERIAL PACK



RP113 Metrodeck RAL7016 1 layer 600g CSM 36m<sup>2</sup>

Kit Contents: 3 x 20kg Metrodeck Polyester Resin (includes catalyst), 1x 50m roll of 75mm Woven Glass Tape, 25kg 600g Chopped Strand Mat, 1 x 20kg Metrodeck RAL7016 Topcoat (includes catalyst).

## RP114 METRODECK MATERIAL PACK



RP114 Metrodeck RAL7016 1 layer 600g CSM 50m<sup>2</sup>

Kit Contents: 4 x 20kg Metrodeck Polyester Resin (includes catalyst), 1x 50m roll of 75mm Woven Glass Tape, 32kg 600g Chopped Strand Mat, 1x 20kg & 2x 5kg Metrodeck RAL7016 Topcoat (includes catalyst).

## METRODECK BASE & TOPCOAT

### Base

A specially blended roofing resin with increased flexibility.

When used as part of the metrodeck roofing system, it meets external fire exposure roof test BS476 part 3 FAB.

### Topcoat

This topcoat when used as part of the Metrodeck roofing system meets external fire exposure roof test BS476 Part 3 FAB.

Coloured to BS18B25 (dark admiralty grey) or RAL7016 (anthracite grey), it provides excellent coverage.

Flexible, UV stable, chemical and heat resistant. Resists foot traffic and thermal expansion



## METRODECK PRINTED 10L BUCKET



Durable polypropylene bucket, ideal for mixing resins and cleaning tools in acetone.

Translucent printing show quantity of resin in litres with a scale to show how much catalyst to add.

## SILVERSEEL

- High grade fibreglass roofing materials
- Fire rated to BS476 Part 3 FAB
- 20 year materials guarantee

### Single Layer Roof

These kits provide the trim jointing tape, mat, SilverSeel resin and SilverSeel topcoat required for a single layer (450g CSM) GRP flat roof when using T&G decking (if using cut edge decking some additional tape may be required on the larger packs). Some excess is built in to allow for overlapping and detailing.

#### RP60 - SILVERSEEL ROOF PACK 7M<sup>2</sup>



#### RP60 SilverSeel 1 Layer 450g CSM 7m<sup>2</sup>

Kit Contents: 2x 5kg Silverseel Polyester Resin (includes catalyst), 1x 50m roll of 75mm Woven Glass Tape, 5kg (11m<sup>2</sup>) 450g Chopped Strand Mat, 1x 5kg Silverseel Grey Topcoat (includes catalyst)

#### RP61 - SILVERSEEL ROOF PACK 16M<sup>2</sup>



#### RP61 SilverSeel 1 Layer 450g CSM 16m<sup>2</sup>

Kit Contents: 1x 20kg Silverseel Polyester Resin (includes catalyst), 1x 50m roll of 75mm Woven Glass Tape, 10kg (22m<sup>2</sup>) 450g Chopped Strand Mat, 2x 5kg Silverseel Grey Topcoat (includes catalyst)

#### RP62 - SILVERSEEL ROOF PACK 30M<sup>2</sup>



#### RP62 SilverSeel 1 Layer 450g CSM 30m<sup>2</sup>

Kit Contents: 2x 20kg Silverseel Polyester Resin (includes catalyst), 1x 50m roll of 75mm Woven Glass Tape, 15kg (33m<sup>2</sup>) 450g Chopped Strand Mat, 1x 20kg Silverseel Grey Topcoat (includes catalyst)

#### RP63 - SILVERSEEL ROOF PACK 40M<sup>2</sup>



#### RP63 SilverSeel 1 Layer 450g CSM 40m<sup>2</sup>

Kit Contents: 3x 20kg Silverseel Polyester Resin (inc catalyst), 1x 50m roll of 75mm Woven Glass Tape, 20kg (44m<sup>2</sup>) 450g Chopped Strand Mat, 1 x 20kg & 1x 5kg Silverseel Grey Topcoat (inc catalyst)

#### RP64 - SILVERSEEL ROOF PACK 60M<sup>2</sup>



#### RP64 SilverSeel 1 Layer 450g CSM 60m<sup>2</sup>

Kit Contents: 4x 20kg Silverseel Polyester Resin (inc catalyst), 1x 50m roll of 75mm Woven Glass Tape, 32kg (71m<sup>2</sup>) 450g Chopped Strand Mat, 2x 20kg Silverseel Grey Topcoat (inc catalyst)

#### RP70 - SILVERSEEL ROOF PACK 8M<sup>2</sup> - HD



#### RP70 SilverSeel 1 Layer 600g CSM 8m<sup>2</sup>

Kit Contents: 3x 5kg Silverseel Polyester Resin (includes catalyst), 1x 50m roll of 75mm Woven Glass Tape, 5kg (8.3m<sup>2</sup>) 600g Chopped Strand Mat, 1x 5kg Silverseel Grey Topcoat (includes catalyst)

#### RP71 - SILVERSEEL ROOF PACK 15M<sup>2</sup> - HD



#### RP71 SilverSeel 1 Layer 600g CSM 15m<sup>2</sup>

Kit Contents: 1x 5kg & 1x 20kg Silverseel Polyester Resin (inc catalyst), 1x 50m roll of 75mm Woven Glass Tape, 10kg (16.6m<sup>2</sup>) 600g Chopped Strand Mat, 2x 5kg Silverseel Grey Topcoat (inc catalyst)



Image courtesy of ProFibre Ltd

## 1 Layer Heavy Duty Roof

These kits provide the mat, SilverSeel resin and SilverSeel topcoat (dark grey BS18B25 finish) required for a single layer (1x600g CSM) GRP flatroof using the Silverseel System for roofs requiring fire retardancy to BS476 part 3 FAB. Some excess is built in to allow for overlapping and detailing.

## 2 Layer Roof

These kits provide the mat, SilverSeel resin and SilverSeel topcoat required for a twin layer (2x450g csm) GRP flat roof when using T&G decking (if using cut edge decking some additional tape may be required on the larger packs). Some excess is built in to allow for overlapping and detailing.

RP72 - SILVERSEEL ROOF PACK 24M<sup>2</sup> - HD



RP72 SilverSeel 1 Layer 600g CSM 24m<sup>2</sup>

Kit Contents: 2x 20kg Silverseel Polyester Resin (inc catalyst), 1x 50m roll of 75mm Woven Glass Tape, 15kg (25m<sup>2</sup>) 600g Chopped Strand Mat, 1x 20kg Silverseel Grey Topcoat (inc catalyst)

RP73 - SILVERSEEL ROOF PACK 36M<sup>2</sup> - HD



RP73 SilverSeel 1 Layer 600g CSM 36m<sup>2</sup>

Kit Contents: 3x 20kg Silverseel Polyester Resin (inc catalyst), 1x 50m roll of 75mm Woven Glass Tape, 25kg (41m<sup>2</sup>) 600g Chopped Strand Mat, 1x 20kg Silverseel Grey Topcoat (inc catalyst)

RP74 - SILVERSEEL ROOF PACK 50M<sup>2</sup> - HD



RP74 SilverSeel 1 Layer 600g CSM 50m<sup>2</sup>

Kit Contents: 4x 20kg Silverseel Polyester Resin (inc catalyst), 1x 50m roll of 75mm Woven Glass Tape, 32kg (53m<sup>2</sup>) 600g Chopped Strand Mat, 1x 20kg & 2x 5kg Silverseel Grey Topcoat (inc catalyst)

RP80 - SILVERSEEL ROOF PACK 8M<sup>2</sup>



RP80 SilverSeel 2 Layer 450g CSM 8m<sup>2</sup>

Kit Contents: 1x 20kg Silverseel Polyester Resin (includes catalyst), 1x 50m roll of 75mm Woven Glass Tape, 10kg 450g Chopped Strand Mat, 1x 5kg Silverseel Grey Topcoat (includes catalyst)

RP81 - SILVERSEEL ROOF PACK 15M<sup>2</sup>



RP81 SilverSeel 2 Layer 450g CSM 15m<sup>2</sup>

Kit Contents: 2x 20kg Silverseel Polyester Resin (includes catalyst), 1x 50m roll of 75mm Woven Glass Tape, 15kg 450g Chopped Strand Mat, 2x 5kg Silverseel Grey Topcoat (includes catalyst)

RP82 - SILVERSEEL ROOF PACK 25M<sup>2</sup>



RP82 SilverSeel 2 Layer 450g CSM 25m<sup>2</sup>

Kit Contents: 3x 20kg Silverseel Polyester Resin (includes catalyst), 1x 50m roll of 75mm Woven Glass Tape, 32kg 450g Chopped Strand Mat, 3x 5kg Silverseel Grey Topcoat (includes catalyst)

RP83 - SILVERSEEL ROOF PACK 30M<sup>2</sup>



RP83 SilverSeel 2 Layer 450g CSM 30m<sup>2</sup>

Kit Contents: 4x 20kg Silverseel Polyester Resin (includes catalyst), 1x 50m roll of 75mm Woven Glass Tape, 33kg 450g Chopped Strand Mat, 1x 20kg Silverseel Grey Topcoat (includes catalyst)

RP84 - SILVERSEEL ROOF PACK 50M<sup>2</sup>



RP84 SilverSeel 2 Layer 450g CSM 50m<sup>2</sup>

Kit Contents: 6x 20kg Silverseel Polyester Resin (inc catalyst), 1x 50m roll of 75mm Woven Glass Tape, 48kg 450g Chopped Strand Mat, 1x 20kg & 2x 5kg Silverseel Grey Topcoat (inc catalyst)

# TRADE LINE ROOFING

## Material Packs

These packs are designed to make ordering simple, they contain the mat, resin, topcoat and catalysts required for a selection of roof sizes and are based on the best pack prices possible.

## Single Layer Roof

These kits provide the trim jointing tape, mat, resin and topcoat required for a single layer (600g CSM) GRP flat roof when using T&G decking (if using cut edge decking some additional tape may be required on the larger packs). Some excess is built in to allow for overlapping and detailing

### RP1 ROOFING MATERIAL PACK



RP1 Roofing material pack 7m<sup>2</sup>

Kit Contents: 2x 5kg Polyester Resin (includes catalyst), 1x 50m roll of 75mm glass tape, 5kg 450g chopped strand mat, 1x 5kg grey topcoat (includes catalyst).

### RP2 ROOFING MATERIAL PACK



RP2 Roofing material pack 16m<sup>2</sup>

Kit Contents: 3x 5kg Polyester Resin (includes catalyst), 1x 50m roll of 75mm Woven Glass Tape, 5kg 600g Chopped Strand Mat, 1x 5kg Grey Topcoat (includes catalyst).

### RP3 ROOFING MATERIAL PACK



RP3 Roofing material pack 30m<sup>2</sup>

Kit Contents: 2x 20kg Polyester Resin (includes catalyst), 1x 50m roll of 75mm Woven Glass Tape, 15kg 450g Chopped Strand Mat, 1x 20kg Grey Topcoat (includes catalyst).

### RP4 ROOFING MATERIAL PACK



RP4 Roofing material pack 40m<sup>2</sup>

Kit Contents: 3x 20kg Polyester Resin (includes catalyst), 1x 50m roll of 75mm Woven Glass Tape, 20kg 450g Chopped Strand Mat, 1x 20kg and 1x 5kg Grey Topcoat (includes catalyst).

### RP5 ROOFING MATERIAL PACK



RP5 Roofing material pack 60m<sup>2</sup>

Kit Contents: 4x 20kg Polyester Resin (includes catalyst), 1x 50m roll of 75mm Woven Glass Tape, 33kg 450g Chopped Strand Mat, 2x 20kg Grey Topcoat (includes catalyst).

### RP10 ROOFING MATERIAL PACK



RP10 Roofing material pack 8m<sup>2</sup>

Kit Contents: 3x 5kg Polyester Resin (includes catalyst), 1x 50m roll of 75mm glass tape, 5kg 600g chopped strand mat, 1x 5kg grey topcoat (includes catalyst).

### RP11 ROOFING MATERIAL PACK



RP11 Roofing material pack 15m<sup>2</sup>

Kit Contents: 1x 20kg and 1x 5kg Polyester Resin (includes catalyst), 1x 50m roll of 75mm Woven Glass Tape, 10kg 600g Chopped Strand Mat, 2x 5kg Grey Topcoat (includes catalyst).



Image courtesy of ProFibre Ltd

## Material Packs

These packs are designed to make ordering simple, they contain the mat, resin, topcoat and catalysts required for a selection of roof sizes and are based on the best pack prices possible.

## 2 Layer Roof

These kits provide the mat, resin and topcoat required for a twin layer (2x450g csm) GRP flat roof when using T&G decking (if using cut edge decking some additional tape may be required on the larger packs). Some excess is built in to allow for overlapping and detailing.

### RP12 ROOFING MATERIAL PACK



RP12 Roofing material pack 24m<sup>2</sup>

Kit Contents: 2x 20kg Polyester Resin (includes catalyst), 1x 50m roll of 75mm Woven Glass Tape, 15kg 600g Chopped Strand Mat, 1x20kg Grey Topcoat (includes catalyst).

### RP13 ROOFING MATERIAL PACK



RP13 Roofing material pack 36m<sup>2</sup>

Kit Contents: 3x 20kg Polyester Resin (includes catalyst), 1x 50m roll of 75mm Woven Glass Tape, 25kg 600g Chopped Strand Mat, 1x 20kg Grey Topcoat (includes catalyst).

### RP14 ROOFING MATERIAL PACK



RP14 Roofing material pack 50m<sup>2</sup>

Kit Contents: 4x 20kg Polyester Resin (includes catalyst), 1x 50m roll of 75mm Woven Glass Tape, 33kg 600g Chopped Strand Mat, 1x 20kg and 2x 5kg Grey Topcoat (includes catalyst).

### RP20 ROOFING MATERIAL PACK



RP20 Roofing material pack 8m<sup>2</sup>

Kit Contents: 1x 20kg Polyester Resin (includes catalyst), 1x 50m roll of 75mm Woven Glass Tape, 10kg 450g Chopped Strand Mat, and 1x 5kg Grey Topcoat (includes catalyst).

### RP21 ROOFING MATERIAL PACK



RP21 Roofing material pack 15m<sup>2</sup>

Kit Contents: 2x 20kg Polyester Resin (includes catalyst), 1x 50m roll of 75mm Woven Glass Tape, 15kg 450g Chopped Strand Mat, 2x 5kg Grey Topcoat (includes catalyst).

### RP22 ROOFING MATERIAL PACK



RP22 Roofing material pack 25m<sup>2</sup>

Kit Contents: 3x 20kg Polyester Resin (includes catalyst), 1x 50m roll of 75mm Woven Glass Tape, 33kg 450g Chopped Strand Mat, 3x 5kg Grey Topcoat (includes catalyst).

### RP23 ROOFING MATERIAL PACK



RP23 Roofing material pack 30 m<sup>2</sup>

Kit Contents: 4x 20kg Polyester Resin (includes catalyst), 1x 50m roll of 75mm Woven Glass Tape, 33kg 450g Chopped Strand Mat, 1x 20kg Grey Topcoat (includes catalyst).

### RP24 ROOFING MATERIAL PACK



RP24 Roofing material pack 50m<sup>2</sup>

Kit Contents: 6x 20kg Polyester Resin (includes catalyst), 1x 50m roll of 75mm Woven Glass Tape, 48kg 450g Chopped Strand Mat, 1x 20kg and 2x 5kg Grey Topcoat (includes catalyst).



# METROFLEX

## THE FLEXIBLE CHOICE



Metroflex is issued with its own 20 year materials guarantee directly from the manufacturer, along with a workmanship guarantee from the installer that your roof will be free from any leakages for at least 20 years.



The Metroflex system has been tested and approved to the highest specification of fire resistance (BS476 pt3 FAA) to meet all building control requirements for flat roofing.



Tough and highly flexible, Metroflex can be applied to many existing roof coverings. Formulated to remain resistant to thermal expansion and foot traffic.

Metroflex Roofing system can be applied to any flat roof of any size and any configuration, and can be installed without expensive specialist tools. The completed monolithic (seamless) membrane is hard wearing, resisting UV, heat, weathering and foot traffic.

The Metroflex system has been tested and approved to the highest specification of fire resistance (BS476 pt3 FAA) to meet all building control requirements for flat roofing.



The resin is coloured either RAL 7016 Anthracite Grey or BS18B25 Dark Admiralty Grey, and a slate granule can be added to create a natural non-slip finish if required.

All Metroflex products carry a materials guarantee, so you will be covered for anything nature can throw at your roof for 20 years.

## Material Packs

These packs are designed to make ordering simple, they contain the Metroflex flexible resin, catalyst and mat required for a selection of roof sizes and are based on the best pack prices possible.

## Including Primer

These kits provide the mat, resin, catalyst and primer required for a GRP flat roof where a primer is required (e.g. applying to roofing felt.)

Metroflex Resin is pre-pigmented dark grey.

Some excess is built in to allow for overlapping and detailing

### METROFLEX MATERIAL PACK - 7M<sup>2</sup>



Metroflex material pack - 7m<sup>2</sup>

Kit Contents: 1x 20kg Metroflex Flexible Roofing Resin, 3kg 300g Chopped Strand Mat, 500g Metroflex Powdered Catalyst, 1x 5kg Metroflex Roofing Primer

### METROFLEX MATERIAL PACK - 14M<sup>2</sup>



Metroflex material pack 14m<sup>2</sup>

Kit Contents: 2x 20kg Metroflex Flexible Roofing Resin, 5kg 300g Chopped Strand Mat, 500g Metroflex Powdered Catalyst, 1x 5kg Metroflex Roofing Primer

### METROFLEX MATERIAL PACK - 21M<sup>2</sup>



Metroflex material pack 21m<sup>2</sup>

Kit Contents: 3x 20kg Metroflex Flexible Roofing Resin, 7kg 300g Chopped Strand Mat, 500g Metroflex Powdered Catalyst, 1x 5kg Metroflex Roofing Primer

### METROFLEX MATERIAL PACK - 28M<sup>2</sup>



Metroflex material pack 28m<sup>2</sup>

Kit Contents: 4x 20kg Metroflex Flexible Roofing Resin, 10kg 300g Chopped Strand Mat, 2x 500g Metroflex Powdered Catalyst, 2x 5kg Metroflex Roofing Primer

### METROFLEX MATERIAL PACK - 43M<sup>2</sup>



Metroflex material pack 43m<sup>2</sup>

Kit Contents: 6x 20kg Metroflex Flexible Roofing Resin, 15kg 300g Chopped Strand Mat, 2x 500g Metroflex Powdered Catalyst, 2x 5kg Metroflex Roofing Primer

### METROFLEX MATERIAL PACK - 60M<sup>2</sup>



Metroflex material pack 60m<sup>2</sup>

Kit Contents: 9x 20kg Metroflex Flexible Roofing Resin, 20kg 300g Chopped Strand Mat, 3x 500g Metroflex Powdered Catalyst, 3x 5kg Metroflex Roofing Primer

### RP11 ROOFING MATERIAL PACK



RP11 Roofing material pack 15m<sup>2</sup>

Kit Contents: 1x 20kg and 1x 5kg Polyester Resin (includes catalyst), 1x 50m roll of 75mm Woven Glass Tape, 10kg 600g Chopped Strand Mat, 2x 5kg Grey Topcoat (includes catalyst).



Image courtesy of ProFibre Ltd

## Material Packs

These packs are designed to make ordering simple, they contain the Metroflex flexible resin, catalyst and mat required for a selection of roof sizes and are based on the best pack prices possible.

## Without Primer

These kits provide the mat, resin and catalyst required for a GRP flat roof when using T&G decking.

Metroflex Resin is pre-pigmented dark grey.

Some excess is built in to allow for overlapping and detailing.

### METROFLEX MATERIAL PACK - 7M<sup>2</sup>



Metroflex material pack 7m<sup>2</sup>

Kit Contents: 1x 20kg Metroflex Flexible Roofing Resin, 3kg 300g Chopped Strand Mat, 500g Metroflex Powdered Catalyst.

### METROFLEX MATERIAL PACK - 14M<sup>2</sup>



Metroflex material pack 14m<sup>2</sup>

Kit Contents: 2x 20kg Metroflex Flexible Roofing Resin, 5kg 300g Chopped Strand Mat, 500g Metroflex Powdered Catalyst

### METROFLEX MATERIAL PACK - 21M<sup>2</sup>



Metroflex material pack 21m<sup>2</sup>

Kit Contents: 3x 20kg Metroflex Flexible Roofing Resin, 7kg 300g Chopped Strand Mat, 500g Metroflex Powdered Catalyst

### METROFLEX MATERIAL PACK - 28M<sup>2</sup>



Metroflex material pack 28m<sup>2</sup>

Kit Contents: 4x 20kg Metroflex Flexible Roofing Resin, 10kg 300g Chopped Strand Mat, 2x 500g Metroflex Powdered Catalyst

### METROFLEX MATERIAL PACK - 43M<sup>2</sup>



Metroflex material pack 43m<sup>2</sup>

Kit Contents: 6x 20kg Metroflex Flexible Roofing Resin, 15kg 300g Chopped Strand Mat, 2x 500g Metroflex Powdered Catalyst

### METROFLEX MATERIAL PACK - 60M<sup>2</sup>



Metroflex material pack 60m<sup>2</sup>

Kit Contents: 9x 20kg Metroflex Flexible Roofing Resin, 20kg 300g Chopped Strand Mat, 3x 500g Metroflex Powdered Catalyst

### RP23 ROOFING MATERIAL PACK



RP23 Roofing material pack 30m<sup>2</sup>

Kit Contents: 4x 20kg Polyester Resin (includes catalyst), 1x 50m roll of 75mm Woven Glass Tape, 33kg 450g Chopped Strand Mat, 1x 20kg Grey Topcoat (includes catalyst).

### RP24 ROOFING MATERIAL PACK



RP24 Roofing material pack 50m<sup>2</sup>

Kit Contents: 6x 20kg Polyester Resin (includes catalyst), 1x 50m roll of 75mm Woven Glass Tape, 48kg 450g Chopped Strand Mat, 1x 20kg and 2x 5kg Grey Topcoat (includes catalyst).

## Roof Trims

A complete range of trims designed for use with glassfibre, polymeric, single membrane and liquid applied flat roofing systems. High adhesion light grey finish suitable for flat roofing, pitched roofing, domestic and industrial applications. Supplied in 3 metre lengths. Brochure and method data available on request. PU adhesive is required for installation.

View the full range of trims at [www.cfsnet.co.uk](http://www.cfsnet.co.uk)

### A170 DRIP FASCIA



Fitted to roof edge to allow drainage into gutter. Compatible with B230 raised edge. Girth: 170mm Depth: 65mm Length: 3 metres

### A200 DRIP FASCIA



Fitted to roof edge to allow drainage into gutter. Compatible with B260 raised edge and C1, C2, C4 corner mouldings. Girth: 200mm Depth: 90mm Length: 3 metres

### A250 DRIP FASCIA



Roof edge detail to cover insulation. Usually used with a warm roof specification. Compatible with B300 raised edge trim. Girth: 250mm Depth: 140mm Length: 3 metres

### B230 RAISED EDGE



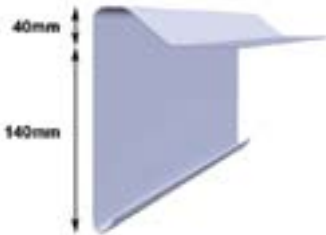
Fitted to roof edge to prevent water run off. Girth: 230mm Depth: 105mm Length: 3 metres

### B260 RAISED EDGE



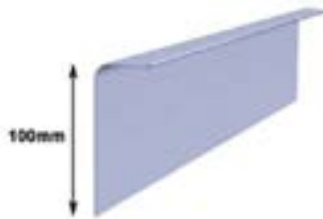
Fitted to roof edge to prevent water run off. Compatible with A200 drip fascia and C1, C2, C4 corner mouldings. Girth: 260mm Depth: 125mm Length: 3 metres

### B300 RAISED EDGE TRIM



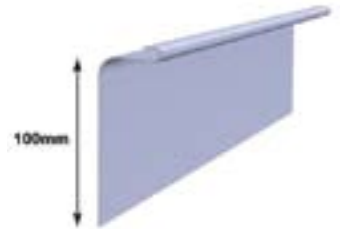
Deep fascia raised edge trim. Usually used with a warm roof configuration. Matches A250 trim. Girth 300mm Depth 180mm

### C100 SIMULATED LEAD FLASHING



Replaces traditional lead flashing and used for driving into brickwork where flat roof butts against existing wall. Overlaps D260 wall fillers. Vertical Cover: 100mm Wall Penetration: 35mm Length: 3 metres

### C100MT SIMULATED LEAD FLASHING



As C100 with integral self securing moisture trap

## C7 SIMULATED LEAD INTERNAL CORNER



For use with C100

## C7 SIMULATED LEAD EXTERNAL CORNER



For use with C100

## D260 WALL FILLET



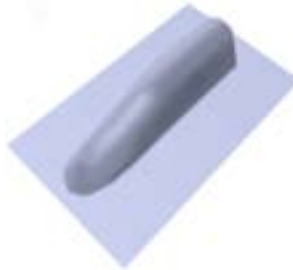
For use where a flat roof butts against existing wall and creates a 45deg. angle to deflect rainwater from existing 90deg. angle. Fits under section C. Flanges 80mm & 105mm Height 120mm, Girth 260mm Length: 3 metres

## E280 EXPANSION JOINT



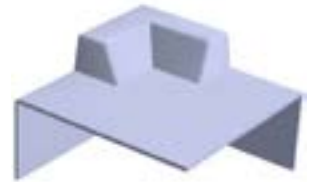
Omega shaped section for use on large areas. May also be used to control drainage. Girth: 280mm Flanges: 90mm Height: 50mm Length: 3 metres

## C5 CLOSURE



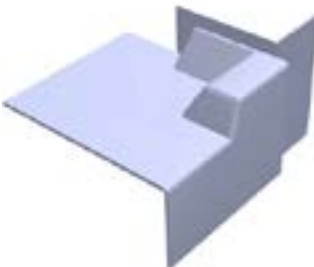
To fit end of E280

## C1 UNIVERSAL CORNER – EXTERNAL



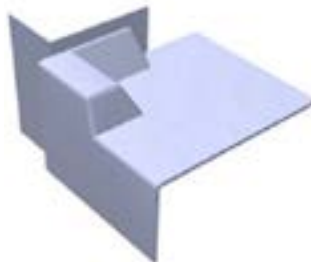
For use with A200 and B260 profiles to form either left or right hand corners

## C2 LEFT HAND CORNER



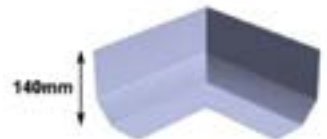
Compatible with A200, B260 and D260 profiles

## C2 RIGHT HAND CORNER



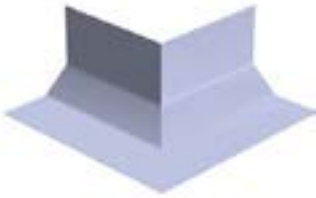
Compatible with A200, B260 and D260 profiles

## C3I INTERNAL CORNER FOR D260



Pre-formed internal corner for D260 fillet trim, avoids the need to mitre.

## C3 EXTERNAL CORNER FOR D260



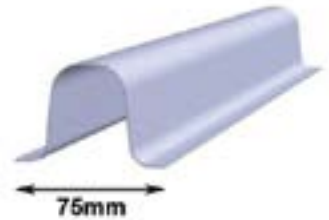
Pre-formed external corner for D260 fillet trim, avoids the needs to mitre.

## C4 INTERNAL CORNER



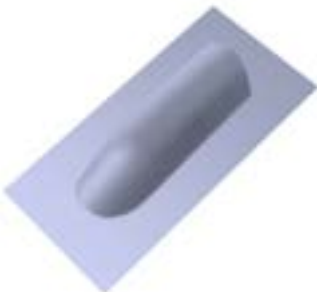
For use with A200 and B260 profiles to form either a left or right hand profile.

## ER35/40 SIMULATED ROLLED LEAD



Used to simulate the appearance of raised rolled lead joints, also provides expansion. Girth 130mm, flanges 20mm, height 40mm. Roll width 35mm Length: 3 metres

## C6 ROLLED RIB CLOSURE



Closure for ER35/40 rolled lead

## G180 DRAINAGE TRIM



Used on larger roofs to aid drainage and ensure gapping of underlying timber to facilitate expansion. Girth 180mm: Flanges 30mm: Depth 15mm: Trough width 80mm. Length: 3 metres

## F300 CONTINUOUS FLAT SHEET



A 300mm wide roll of 1mm thick flexible GRP sheet inserted under a pitched roof and brought down onto the flat roof

## F900 CONTINUOUS FLAT SHEET



A 915mm wide roll of 1mm thick flexible GRP sheet inserted under a pitched roof and brought down onto the flat roof

## AT195 INTERNAL RIGHT ANGLE



Adhesion on inner face for forming upstands, gutters, floors, etc. Girth 195mm: Flange widths 105mm and 85mm. Length: 3 metres

## AT195 EXTERNAL RIGHT ANGLE



Adhesion on outer face for step details, cover flashings etc. Girth 195mm: Flange widths 105mm and 85mm. Length: 3 metres

## C8B EXPANSION CLOSURE



C8B Expansion Closure (E280 and B trims)

Closure to connect an E280 expansion trim to a B260 raised edge trim

## C9A EXPANSION CLOSURE



C9A Expansion Closure (E280 and A200)

Closure to connect an E280 expansion trim to a A200 drip edge trim.

## C11D EXPANSION ENCLOSURE



C11D Expansion Enclosure (E280 and D Trim)

Closure to connect an E280 expansion trim to a D260 fillet trim

## 100mm WIDE LONG REACH FRAME

100mm wide 420mm long reach roller frame

- High Quality steel arm frames
- Simple push fit into rollers
- Screw thread inner handle



## 180mm WIDE HEAVY DUTY FRAME

High Quality steel arm frames

- Simple push fit into rollers



## 150mm WIDE ROLLER FRAME

High Quality steel arm frames

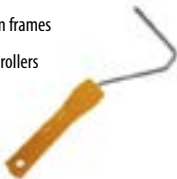
- Simple push fit into rollers



## 100mm WIDE ROLLER FRAME

High Quality steel arm frames

- Simple push fit into rollers



## 250mm WIDE HEAVY DUTY FRAME

High Quality steel arm frames

- Simple push fit onto rollers
- Screw thread inner handle



## TELESCOPIC EXTENSION HANDLE

Metal extension pole supplied complete with screw on adaptor to allow easy use with tapered handle if preferred. Length 825mm. Extends to 1390mm.



## TOPCOAT ROLLERS



- Short 4mm pile height 100% wool refill.
- Especially designed for application of gecoat
- Neutral pale cream colour
- Quick push fit

## RESIN APPLICATORS



- Deep 18mm pile refill, holds more resin
- 100% polyamide fibres
- Resin resistant, lasts even longer!
- Quick push fit

## PADDLE ROLLERS



- Effective air relief on all fabrics
- Particularly effective with chopped strand mat
- Completely solvent proof
- Quality lightweight aluminium

# TOOLS & ACCESSORIES

## BUCKETS



Ideal for mixing and cleaning tools in acetone. Also unaffected by resin and can be reused by "cracking out" old resin build up. Lids can be supplied separately.

3L, 5.6L, 11L

## ROOF TOOL PACK - SMALL



TP5 Tool Pack, 1 operator, Small Project

1 x box (50 pairs) surgical gloves, 1x 140x21 paddle roller, 1x 75x21 paddle roller, 4x 150mm deep pile resin roller refill, 2x 150mm short pile topcoating roller refill, 1x 150mm roller arm, 2x 75mm Brush, 3x 5 litre bucket, 1x graduated measuring cup, 2.5 litre acetone, 1x telescopic extension arm, 1x 250ml liquid hand cleaner.

## ROOF TOOL PACK - LARGE



TP6 Tool Pack, 2 operators, Large Project

1 x box (50 pairs) surgical gloves, 2x 225x21 paddle roller, 10x 180mm deep pile resin roller refill, 5x 180mm short pile topcoating roller refill, 2x 180mm roller arm, 2x 75mm Brush, 5x 10 litre bucket, 5 litre acetone, 2x telescopic extension arm, 1 litre paste hand cleaner.

## TARPAULIN



Multi purpose lightweight, washable, durable, rot proof, tear and stretch resistant. Aluminium eyelets every metre around the edge.

Mini – 3.6m x 3.0m  
Midi – 3.6m x 5.2m  
Maxi – 7.0m x 5.2m

## INDASA PU ADHESIVE/SEALANT



A new flexible PU adhesive ideal for bonding roof trims and other GRP, wood and metal. 310ml Cartridge. Available in Black, White and Grey

## HOT AIR GUN



2000w Hot Air Gun

2 heat settings, lightweight for easy handling. Paint scraper included. Nozzle selection included.

## ACETONE



The most popular and effective solvent brush cleaner for removing uncured resin from tools. Not for cleaning unprotected hands. It should be kept in covered containers as it evaporates quickly and is highly flammable.

## PRYMAX GRP PRIMER



Prymax GRP Primer is a polyurethane solution that massively improves bonding of polyester resins to concrete, wood and metal.

## DELABOLE SLATE GRANULES 25KG



Slate granules are used for providing a non-slip surface when sprinkled onto wet topcoat. Can also be used with some fire rated fibreglass flatroofing systems to achieve an AA rating.

## CHOPPED STRAND MAT



The most common form of reinforcement used with polyester resin for hand lay up. Strands of glass fibre are held together by an emulsion binder to form a mat. Supplied on a roll usually 96 cm wide in grades of various thickness expressed in weight per m<sup>2</sup>.

- Fast wet-out
- Even thickness
- High mechanical strength
- Excellent wet strength retention
- Available in 450g and 600g weights

## CHOPPED STRAND MAT BANDAGE

## SURFACE TISSUE



75mm wide, 450g chopped strand mat bandage, used to bandage roof trim fascias and decking in fibreglass roofing and anywhere that requires a convenient CSM strip.



A thin glass fibre mat in a form similar to tissue paper. Supplied on a roll 1m wide and only 25-30 grams per m<sup>2</sup>. During moulding it is used to cover up the coarse glass pattern produced by CSM. When sheathing it can be applied onto the CSM while the resin is still wet, again to cover the glass pattern and form a smooth surface for the flowcoat to be applied. Uses 100g of resin per m<sup>2</sup>.

## OSB3 T&G ROOF DECK

Especially recommended for GRP flat roofs, this OSB (Orientated Strand Board) is tongue & grooved making installation quicker and easier and is now the preferred choice for roofing contractors. A stronger alternative to softwood plywood and precision-engineered for consistent strength, Sterling OSB3 is BBA approved and conforms to all relevant Eurocodes. Bulk delivery of over 100 sheets may be available, please call us for further information.

**SterlingOSB<sup>®</sup>**  
Norbord



## VAPOUR BARRIER MEMBRANE

- Cold-applied and self-adhesive
  - Impervious to vapour
  - Can be walked/stepped on
  - Higher than average tensile strength
  - Forms an airtight layer
  - Resistant to chemicals and ageing
- 1.08m x 40m roll

ALUTRIX 600 is a quick-application, self-adhesive and extremely resistant vapour barrier membrane. It consists of a reinforced aluminium material with a self-adhesive backing and a removable release film. Use between bottom deck and insulation when installing a GRP warm roof.



# PROTECTIVE EQUIPMENT

## COVERALL WITH HOOD



Protective overalls made from breathable fabric, offering protection against splashes and hazardous dusts. Rated CE category III (European standard type 5 & 6). Effective barrier against dust particles and liquids in fibreglass and composite manufacturing.

- L (Chest up to 108cm - Height up to 180cm)
- XL (Chest up to 116cm - Height up to 188cm)
- XXL (Chest up to 124cm - Height up to 196cm)
- XXXL (Chest up to 132cm - Height up to 204cm)



## SILVERLINE SAFETY GLASSES



Impact and scratch-resistant polycarbonate. Wraparound design for maximum visibility and eye protection. Comfortable, moulded nosepiece. Adjustable side-arm length. Conforms to EN166.

## SAFETY GLASSES



Impact and scratch-resistant polycarbonate. Wraparound design for maximum visibility and eye protection. Comfortable, moulded nosepiece. Adjustable side-arm length. Conforms to EN166.

## ECONOMY SAFETY GOGGLES



Soft PVC frame with impact-resistant polycarbonate lens. Lightweight and flexible. Wide vision with direct ventilation. Conforms to EN166.

## GERSON 9000 SERIES RESPIRATOR



- Dust and vapour protection
- Twin inhalation valves
- Replaceable Filters

The Gerson 9000E2B Series Respirator is a low maintenance half mask designed for effective and comfortable protection against certain gases, organic vapour and particulate hazards found throughout industry. Detachable, replaceable filters for economy.

## GERSON PARTICULATE FILTER PACK



Pack contains 10x Gerson G01E2 replacement filters to fit 9000E2B series half mask

## GERSON FILTER PACK OF 2



Pack contains 2x Gerson G01E2 replacement filters to fit 9000E2B series half mask

# PROTECTIVE EQUIPMENT

## MOULDED VALVED FACE MASK FFP3



- FFP3 disposable mask
- Up to 50x protection
- For use against toxic dust, fibres and aqueous mists
- Moulded & valved for comfort

## 3M VAPOUR RESPIRATOR 4251



- Integral construction gas and vapour protection
- Twin inhalation valves to reduce breathing resistance
- Supplied in a hermetically sealed foil bag to extend shelf life and prevent contamination
- Meets european standard EN405:2002 for valved filtering half mask respirators for gases or gas and particulate combinations

## PARTICLE MASK 50 PACK



Disposable nuisance dust mask.

## INDUSTRIAL MARIGOLD GLOVES



Super tough marigold gloves which combines great flexibility with excellent chemical resistance to resins and solvents. Long cuff and heavier weight. The gloves are flock lined for comfort with a raised pattern on palm and fingers for grip. Beaded cuff for tear resistance and easy pull on.

Small, Medium or Large.

## RED PVC GLOVES



Heavy weight PVC gloves, knitted wristbands. CE type tested and certified. Size-Large.

## SURGICAL NITRILE GLOVES



Powder and Latex free high strength surgical glove. Ambidextrous with beaded cuff.

Medium, Large or X-Large

## SURGICAL LATEX GLOVES



**SAVE**  
10 or more

A lightweight disposable natural latex glove, lightly powdered. Non-sterile and ambidextrous with beaded cuff. Size Large.

## KLEEN ALL LIQUID



A powerful liquid version of the renowned Kleenall Paste, Kleenall Liquid is an easily dispensed poly-beaded hand cleaner that provides impeccable performance for professionals in the painting, printing, chemical and engineering areas.

## KLEEN ALL CONDITIONING CREAM



Prevents cracking and chafing. Kleenall protect also provides a barrier against dirt and enables easier cleaning which means that less aggressive hand cleaners are needed. Then after work, Kleenall Protect is perfect to make your hands feel your own again.

# TERMS & CONDITIONS

## About Us

CFS Fibreglass Supplies is completely dedicated to your total satisfaction. If you have any suggestions or comments, please email us at [sales@cfsnet.co.uk](mailto:sales@cfsnet.co.uk).

CFS Fibreglass is a trading name of CFSNET Ltd. Where the terms 'We', 'Our', 'Us' and 'The Company' are used this means CFS. Please see the 'Contact Us' section in the front of the catalogue for our full address and contact details. The terms 'You', 'Your' and 'The Customer' are used to mean the person(s) purchasing from CFS.

Our contract shall be governed by and in accordance with English law.

The information given in this brochure is to the best of our knowledge true and accurate. As conditions for use of our products is beyond our control, we cannot accept responsibility for any damage or losses resulting from information given.

## Making a Purchase

Making a purchase could not be easier. Just browse our catalogue and telephone or email us with your requirements. You can also place your order online at [www.cfsnet.co.uk](http://www.cfsnet.co.uk).

Occasionally we will not have the amount of stock that may be required to fulfill an order, if this happens, you will be contacted by phone and/or email on the day we receive the order. We will contact you to inform you of the revised delivery date, back order the items or offer suitable alternatives. If the options presented are not suitable you can cancel either the items in question or the whole order. If we substitute the items and the substitutes are unsatisfactory then you have the right to cancel these items and we will collect them. If we are unable to reach you, the order will be put on hold until you have contacted us to discuss the order.

All goods advertised are subject to availability. We are not obliged to accept your order and we have the right to decline or refuse an order or limit an order quantity.

## Making a Payment

In order to protect you and us from debit and credit card fraud, we reserve the right to send first and/or large orders to the cardholder's address only or to seek more information from you. We will always contact you on these occasions.

We accept Visa, Mastercard, Maestro & Switch credit and debit cards. We do not accept American Express. We also accept payments by Paypal or BACS bank transfers but please be aware that we will not release or send the goods until payment has cleared through our account.

Although we strive to be accurate with all product details and prices, if a product or price is incorrect due to a typographical error we have the right to refuse or cancel any order whether or not the order has been confirmed. If your credit or debit card has already been charged and we subsequently cancel your order, we will immediately refund the full amount.

We do not store any of your credit or debit card information, our systems automatically delete your card details as soon as a payment has been processed. Please be aware that if you choose to send us your credit or debit card details by email, it is not a secure method and you do so at your own risk.

## Tax Charges

VAT is applied to your order at a rate of 20%. If you have any queries regarding VAT on your order please contact us for help.

## Prices

Prices displayed in the catalogue or on our website do not include VAT or delivery costs. The total costs will be provided when you speak to an advisor or place your order online. Catalogue prices are correct at the time of going to press and the prices shown supersede all previous price lists. We reserve the right to change prices at any time to reflect market conditions but we will confirm the current price with you before accepting your order.

## Delivery & Shipping

Please refer to the 'Delivery' section for information on delivery prices, areas and time periods.

We will deliver to the delivery address as instructed by the purchaser. The purchaser is responsible for ensuring an authorised person is present at the address to sign for and take delivery of the goods. CFS and/or their couriers will not be held liable for any losses if an unauthorised person takes delivery of the goods.

All larger items and consignments of our goods are classed as hazardous and therefore the delivery drivers cannot leave goods unattended. Please ensure that someone is present at the delivery address to sign for the goods. If this may be a problem, please call us for advice.

Most small items will be delivered by parcel courier and they can be left somewhere secure if you provide clear instructions at the time of order. There is a 'special instructions' box on the 'delivery address' page of the website for this purpose.

Only small non-hazardous items that are not liquid may be sent through the post. Please call to discuss.

We will assume that all delivery addresses can be accessed easily by lorries. If not, then it is your responsibility to inform us of any access restrictions to the delivery address at the time of order.

Our couriers will try to deliver your order twice. If unable to deliver then they will leave contact cards. If they do not receive contact from you or us within the following week, the order will be returned to CFS. If you request an order to be re-sent from CFS to yourself after it has been returned to CFS for the above reasons, further delivery charges will be incurred.

Delivery time periods are estimates and cannot be guaranteed. CFS uses third party courier companies and on rare occasions, delays may occur due to reasons beyond our and their control.

Because delivery dates and times cannot be guaranteed, purchasers are not entitled to consider late delivery to automatically be a breach of contract. For these reasons, we strongly recommend that you do not book any contractors, tradesmen or urgent work until you have received and checked the goods.

Our liability to you shall not, in any event, include losses to third parties or losses related to any business of yours, such as profits or business interruption, neither will we be responsible to you for any other loss which is not a foreseeable consequence of us being in breach of these terms and conditions or our legal duties.

## Returns Policy

We take pride in the quality of our products and hope that you will find them satisfactory. In the event of a fault or an error we will replace it as soon as possible. If we are unable to replace the item or provide a suitable alternative then we will refund you.

Please ensure that you check your items carefully upon receipt and notify us of any damaged, missing or incorrectly sent items within 7 days of receiving the goods so that we can resolve the problem straight away.

We rely on third party couriers who are usually very careful, but very occasionally problems can occur. If your goods arrive damaged, please be prepared to provide photographs to us so that we can see the problem.

We cannot be held responsible or liable if you have made a mistake in ordering, for example, by ordering the wrong items or ordering too much, but we will try and help where possible. In these situations we reserve the right to charge for the cost of any collection and/or a 15% handling charge, this does not affect any rights you may have under the legislation below.

Under the Consumer Contracts (Information, Cancellation and Additional Charges) Regulations 2013 (The UK implementation of the EU Directive on Consumer Rights 2011/83/EC), you may have the right to cancel your order and claim a refund.

These cancellation rights may only apply to distance sales transactions (remote sales conducted largely or wholly by telephone, internet or post), they must be carried out within the European Union and they only apply to private customers buying for personal use, they do not apply to customers buying for or in the course of a trade or business.

To exercise these rights you can either fill out the model cancellation form included in this catalogue or you may contact us by phone, email, fax or letter and tell us you wish to cancel within 14 days of you receiving the goods. For your records it is advisable to state your intentions in writing. If you have already received the goods then they must be unused, with the original packaging and in the same condition that they reached you. If not, you may lose your right to cancel.

We will charge the customer the reasonable cost of collecting the cancelled goods. As an estimate, the collection costs will be the same as the original delivery charge for the order. Alternatively a customer may arrange to return the goods to CFS themselves at their own expense and CFS will refund the cost of the items upon receipt of the goods.

If you are buying in the course of a trade or business, or you are based outside the European Union, please be aware that you may not have the automatic right to cancel your order with CFSNET Ltd. However, please contact us with any concerns and we will strive to assist you where we can. This does not affect your statutory rights as may be applicable under UK legislation.

## Complaints Procedure

We put every effort into providing quality products and a seamless service but we recognise that sometimes things can go wrong. If you have a concern please contact us as soon as possible and we will take steps to address any issues.

Please contact us by telephone, email, fax or by post as soon as the concern arises and we will acknowledge your complaint within 2 working days. It may take longer to resolve but we will assign a person to your case and they will ensure they continue to maintain contact until the matter is resolved.

## Restricted Sales

By purchasing any items through our website or over the telephone you are confirming that you are over 18 years of age.

It is illegal to sell knives, solvents and volatile substances to persons under the age of 18.

## Privacy & Personal Information

Information we may collect about you and how we use it

When you place an order with us or set up a trade credit account with us we ask for a variety of information from you such as: your name; your contact details; the type of business you are in; two references if you require a credit account; and your card details. All this information is necessary to process your order; set you up as a trade account customer; process payments; enable us to inform you of any delays or problems and occasionally send you promotions, newsletters and questionnaires if you have selected to subscribe to our emails.

Our lawful basis for collecting your data is either through a contract to supply you goods; consent (you've told us we can process your data for a specific purpose when placing an order with us or filling out a new account form); or legitimate interests (you buy from us already so it's reasonable to expect that you may be interested in other marine products/want to receive our new catalogue etc). If you have previously opted in to receive our mailings, you do still have the right to unsubscribe from our mailings at any time by clicking the 'unsubscribe' link that is at the end of each email. Please allow up to 10 days for your request to be updated on our system.

We will never pass your details onto other companies, except those who directly assist us in our own marketing. These companies currently include MailChimp (who delivers our marketing emails). We gather statistics around email opening and clicks using industry standard technologies to help us monitor and improve our marketing emails.

We will not sell, distribute or lease your personal information to third parties unless we are required by law to do so.

You may request details of personal information which we hold about you under the Data Protection Act 1998. If you would like a copy of the information held on you please write to CFSNET LTD, United Downs Industrial Park, St Day, Redruth, Cornwall, TR16 5HY.

If you believe that any information we are holding on you is incorrect or incomplete, please write to us at the above address. We will promptly correct any information found to be incorrect.

We respect your privacy and are committed to protecting it. Your account will be closed and all of your data will be deleted if you haven't bought from us again within 2 years.

Information we may collect about you and how we use it

Your details and orders are stored on our secure cloud based server, which is protected with login and password controls and new account forms with attached information are kept filed in the office and then stored securely once your account is up and running. We are legally required to keep all invoices for six years which are stored in our database. We do not, however, store your card details. All card payments are protected in line with PCI DSS industry standards and we ensure that we are compliant with their requirements each year.

Our website uses secure server software to protect your information whenever you place an order or access your account information. The software encrypts all information you input before it is sent to us to minimise the risk of this being intercepted before it is received by us.

## Security

We are committed to ensuring that your information is secure. In order to prevent unauthorised access or disclosure, we have put in place suitable physical, electronic and managerial procedures to safeguard and secure the information we collect.

Thanks to all our customers and suppliers for their contributions to this catalogue.

# SHIPPING

## Shipping and Handling

Orders required to be delivered on the next working day must be placed before 1pm. All orders placed after 1pm are likely to be despatched on the following working day.

### England and Wales

Weight	Next Day	3 Day
up to 1kg	£6.95	£6.10
up to 2kg	£8.60	£6.95
up to 5kg	£9.80	£7.95
up to 10kg	£10.50	£9.25
up to 15kg	£11.55	£10.45
up to 30kg	£17.65	£14.90
up to 50kg	£26.60	£22.50
up to 60kg	£28.90	£24.85
up to 70kg	£35.25	£27.15
up to 75kg	£36.40	£28.35
up to 80kg	£37.00	£29.90
up to 90kg	£41.60	£35.20
up to 100kg	£43.35	£37.55
up to 250kg	£67.25	£46.20
up to 450kg	£71.05	£48.50
up to 1000kg	£79.70	£49.65

### Scottish Highlands

Weight	3 Day
up to 5kg	£29.80
up to 10kg	£31.15
up to 20kg	£37.80
up to 30kg	£51.05
up to 50kg	£59.80
up to 100kg	£67.85
up to 150kg	£80.35
up to 200kg	£92.55
over 200kg	P.O.A.

Northern Scotland postcodes include:  
IV, KW, PA20-80, PH5-50 & AB

### Cornwall

We will arrange free delivery within Cornwall for orders over £150 ex VAT.

For orders below £150 see table below.

Weight	3 Day
up to 5kg	£5.80
up to 25kg	£7.30
up to 50kg	£14.65

### N Ireland, Scottish Islands, Isle of Man, Channel Islands

Weight	3 Day
up to 5kg	£29.80
up to 10kg	£31.15
up to 20kg	£37.80
up to 30kg	£51.05
over 50kg	P.O.A.

Delivery prices shown are exclusive of VAT.

Orders are processed and deliveries undertaken during working days only. Working days are Monday to Friday and do not include Saturdays, Sundays or bank holidays. 3 day deliveries may be delivered sooner. 3 working days does not include the day of despatch.

We will assume that all delivery addresses can be accessed easily by lorries. If not, then it is your responsibility to inform us of any access restrictions to the delivery address at the time of order.

CFS use specialist carriers to deliver your items. It is your responsibility to ensure that someone is present at the delivery address to sign for your order. Instructions can be given for smaller consignments, in most cases large orders cannot be delivered without signature. Please call CFS Sales 01209 821028 to check.

International Delivery:

CFS can deliver internationally to most countries, European and Worldwide. Please call one of our sales team with your requirements and they will search for the best transport costs and lead times.

## Safety in the workplace

The pictograms for labelling chemical products have changed. Prevent workplace injury and diseases by learning more about the pictograms.

Be aware of what these two similar pictograms mean.

This one warns against flammable gases, aerosols, liquids and solids:

- Self-heating substances & mixtures
- Pyrophonic liquids & solids, that may catch fire when in contact with air
- Substances & mixtures which, in contact with water, emit flammable gases
- Self-reactive substances or organic peroxides that may cause fire when heated



If you find this pictogram on the label, it means you are dealing with oxidising gases, solids and liquids, which can cause or intensify fire and explosion



A substance or mixture with this pictogram has one or more of the following effects:

- Is carcinogenic
- Affects fertility and the unborn child
- Causes mutations
- Is a respiratory sensitiser, may cause allergy, asthma or breathing difficulties when inhaled
- Is toxic to specific organs
- Aspiration hazards, may be fatal or harmful if swallowed or if it enters airways



Know that you are handling a chemical that is acutely toxic in contact with skin, if inhaled or ingested, which may even be fatal.



Whenever you use a chemical with this pictogram on it, be aware that it is corrosive and can cause severe skin burns and eye damage. It is also corrosive to metals.



This pictogram warns that a substance is hazardous to the environment and causes aquatic toxicity.



This pictogram means one or more of the following:

- Acutely toxic (harmful)
- Causes skin sensitisation, skin and eye irritation
- Respiratory irritant
- Narcotic, causes drowsiness or dizziness
- Hazardous to the Ozone layer



**Material Safety Data Sheets (MSDS) available for each product - please request.**

## Cancellation Form

As required under the Consumer Contracts (Information, Cancellation and Additional Charges) Regulations 2013 (EU Directive on Consumer Rights 2011/83/EC).

To:

CFSNET LTD t/a CFS Fibreglass  
 United Downs Industrial Estate  
 St Day  
 Redruth  
 Cornwall  
 TR16 5HY  
 UK

Tel: 01209 821028

Email: sales@cfsnet.co.uk

I/We hereby give notice that I/we cancel my/our contract of sale of the following goods received on (date).....

Order Reference Number (if known).....

Customer Name(s).....

Customer Address.....

.....

.....

.....

Customer Signature.....  
 (only if this form is notified on paper)

Date.....



CFS Fibreglass,  
United Downs Industrial Park,  
Redruth, Cornwall TR16 5HY

CFS Fibreglass is a trading name of CFSNET LTD  
Company Registration Number: 8244956  
VAT Number: 172 8309 00